

# Product Datasheet

## Recombinant Rat CXCL1/GRO alpha/KC/CINC-1 Protein NBP2-35250-5ug

Unit Size: 5ug

Store at -20 to -70C as supplied. After reconstitution, store at 2 to 8C for 1 month and at -20 to -70C for long term storage. Avoid repeated freeze-thaw cycles.

[www.novusbio.com](http://www.novusbio.com)



[technical@novusbio.com](mailto:technical@novusbio.com)

Protocols, Publications, Related Products, Reviews, Research Tools and Images at:  
[www.novusbio.com/NBP2-35250](http://www.novusbio.com/NBP2-35250)

Updated 1/25/2025 v.20.1

Earn rewards for product  
reviews and publications.

Submit a publication at [www.novusbio.com/publications](http://www.novusbio.com/publications)

Submit a review at [www.novusbio.com/reviews/destination/NBP2-35250](http://www.novusbio.com/reviews/destination/NBP2-35250)



**NBP2-35250-5ug**

Recombinant Rat CXCL1/GRO alpha/KC/CINC-1 Protein

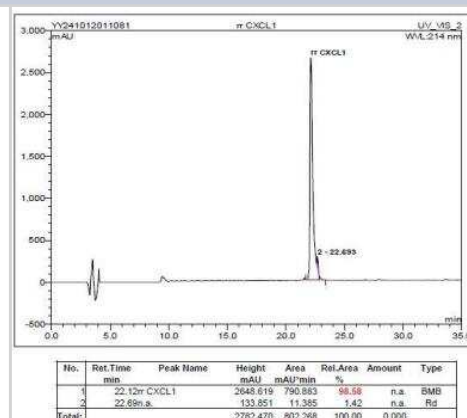
| Product Information         |   |
|-----------------------------|---|
| Unit Size                   | 5ug   |
| Concentration               | Lyoph   |
| Storage                     | Store at -20 to -70C as supplied. After reconstitution, store at 2 to 8C for 1 month and at -20 to -70C for long term storage. Avoid repeated freeze-thaw cycles. |
| Preservative                | No Preservative   |
| Reconstitution Instructions | Recommended to centrifuge prior to opening. Reconstitute in sterile distilled water or aqueous buffer containing 0.1% BSA to a concentration of 0.1-1.0mg/mL.     |
| Purity                      | > 97 % pure by SDS-PAGE and HPLC  |
| Buffer                      | Lyophilized from a 0.2 um filtered concentrated solution in 20 mM PB, pH 7.4, 150 mM NaCl.  |
| Target Molecular Weight     | 7.8 kDa   |

| Product Description      |  |
|--------------------------|--|
| Description              | A single, non-glycosylated polypeptide chain containing 72 amino acids corresponding to CXCL1/GRO alpha/KC/CINC-1 <b>Source:</b> <i>E. coli</i><br><br><b>Uniprot ID:</b> P14095<br><br><b>Amino Acid Sequence:</b> APVANELRCQ CLQTVAGIHF KNIQSLKVMP PGPHTQTEV IATLKNGREA CLDPEAPMVQ KIVQKMLKGV PK |
| Gene ID                  | 2919   |
| Gene Symbol              | CXCL1  |
| Species                  | Rat  |
| Details of Functionality | CXCL1 Protein is fully biologically active when compared to standard. The biological activity determined by a chemotaxis bioassay using rat neutrophils is in a concentration range of 10-100 ng/ml.   |
| Endotoxin Note           | Less than 1 EU/ug of CXCL1/GRO alpha/KC/CINC-1 as determined by LAL method.  |

| Product Application Details |                       |
|-----------------------------|-----------------------|
| Applications                | SDS-Page, Bioactivity |
| Recommended Dilutions       | SDS-Page, Bioactivity |

**Images**

HPLC: Recombinant Rat CXCL1 Protein [NBP2-35250] - Rat CXCL1 Protein [NBP2-35250]





### **Novus Biologicals USA**

10730 E. Briarwood Avenue  
Centennial, CO 80112  
USA  
Phone: 303.730.1950  
Toll Free: 1.888.506.6887  
Fax: 303.730.1966  
nb-customerservice@bio-techne.com

### **Bio-Techne Canada**

21 Canmotor Ave  
Toronto, ON M8Z 4E6  
Canada  
Phone: 905.827.6400  
Toll Free: 855.668.8722  
Fax: 905.827.6402  
canada.inquires@bio-techne.com

### **Bio-Techne Ltd**

19 Barton Lane  
Abingdon Science Park  
Abingdon, OX14 3NB, United Kingdom  
Phone: (44) (0) 1235 529449  
Free Phone: 0800 37 34 15  
Fax: (44) (0) 1235 533420  
info.EMEA@bio-techne.com

### **General Contact Information**

www.novusbio.com  
Technical Support: nb-technical@bio-techne.com  
Orders: nb-customerservice@bio-techne.com  
General: novus@novusbio.com

### **Products Related to NBP2-35250-5ug**

---

|                |   |
|----------------|---|
| NBP2-34904-5ug | Recombinant Human CXCL1/GRO alpha/KC/CINC-1 Protein |
| 210-TA-005     | TNF-alpha [Unconjugated]                            |
| DY453-05       | CXCL1/GRO alpha/KC/CINC-1 [Biotin]                  |
| M6000B-1       | IL-6 [HRP]  |

---

### **Limitations**

This product is for research use only and is not approved for use in humans or in clinical diagnosis. Peptides and proteins are guaranteed for 3 months from date of receipt.

For more information on our 100% guarantee, please visit [www.novusbio.com/guarantee](http://www.novusbio.com/guarantee)

Earn gift cards/discounts by submitting a review: [www.novusbio.com/reviews/submit/NBP2-35250](http://www.novusbio.com/reviews/submit/NBP2-35250)

Earn gift cards/discounts by submitting a publication using this product:  
[www.novusbio.com/publications](http://www.novusbio.com/publications)

