

Product Datasheet

Recombinant Rat GM-CSF Protein NBP2-35206-5ug

Unit Size: 5ug

Store at -20 to -70C as supplied. After reconstitution, store at 2 to 8C for 1 month and at -20 to -70C for long term storage. Avoid repeated freeze-thaw cycles.

www.novusbio.com



technical@novusbio.com

Protocols, Publications, Related Products, Reviews, Research Tools and Images at:
www.novusbio.com/NBP2-35206

Updated 1/25/2025 v.20.1

Earn rewards for product
reviews and publications.

Submit a publication at www.novusbio.com/publications

Submit a review at www.novusbio.com/reviews/destination/NBP2-35206



NBP2-35206-5ug

Recombinant Rat GM-CSF Protein

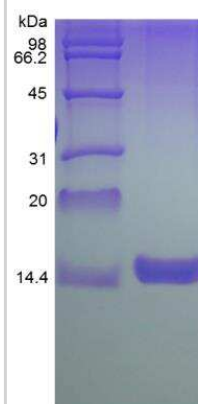
Product Information	
Unit Size	5ug
Concentration	Lyoph
Storage	Store at -20 to -70C as supplied. After reconstitution, store at 2 to 8C for 1 month and at -20 to -70C for long term storage. Avoid repeated freeze-thaw cycles.
Preservative	No Preservative
Reconstitution Instructions	Recommended to centrifuge prior to opening. Reconstitute in sterile distilled water or aqueous buffer containing 0.1% BSA to a concentration of 0.1-1.0mg/mL.
Purity	> 98 % pure by SDS-PAGE and HPLC
Buffer	Lyophilized from a 0.2 um filtered solution in PBS, pH 7.4.
Target Molecular Weight	14.5 kDa

Product Description	
Description	A single non-glycosylated polypeptide chain containing 127 amino acids corresponding to GM-CSF Source: <i>E. coli</i> Uniprot ID: <i>P48750</i> Amino Acid Sequence: <i>APTRSPNPVT RPWKHVDAIK EALSLLNDMR ALENEKNEDV DIISNEFSIQ RPTCVQTRLK LYKQGLRGNL TKLNGALTM I ASHYQTNCPP TPETDCEIEV TTFEDFIKNL KGFLFDIPFD CWKPVQK</i>
Gene ID	1437
Gene Symbol	CSF2
Species	Rat
Details of Functionality	GM-CSF Protein is fully biologically active when compared to standard. The ED50 as determined by a cell proliferation assay using murine FDC-P1 is less than 0.01 ng/ml, corresponding to a specific activity of > 1.0 x 10 ⁸ IU/mg.
Endotoxin Note	Less than 1 EU/ug of GM-CSF as determined by LAL method.

Product Application Details	
Applications	SDS-Page, Bioactivity
Recommended Dilutions	SDS-Page, Bioactivity

Images

SDS-Page: Rat GM-CSF Protein [NBP2-35206]





Novus Biologicals USA

10730 E. Briarwood Avenue
Centennial, CO 80112
USA
Phone: 303.730.1950
Toll Free: 1.888.506.6887
Fax: 303.730.1966
nb-customerservice@bio-techne.com

Bio-Techne Canada

21 Canmotor Ave
Toronto, ON M8Z 4E6
Canada
Phone: 905.827.6400
Toll Free: 855.668.8722
Fax: 905.827.6402
canada.inquires@bio-techne.com

Bio-Techne Ltd

19 Barton Lane
Abingdon Science Park
Abingdon, OX14 3NB, United Kingdom
Phone: (44) (0) 1235 529449
Free Phone: 0800 37 34 15
Fax: (44) (0) 1235 533420
info.EMEA@bio-techne.com

General Contact Information

www.novusbio.com
Technical Support: nb-technical@bio-techne.com
Orders: nb-customerservice@bio-techne.com
General: novus@novusbio.com

Products Related to NBP2-35206-5ug

NBP2-35066-5ug	Recombinant Mouse GM-CSF Protein
210-TA-005	TNF-alpha [Unconjugated]
7954-GM-010/CF	GM-CSF [Unconjugated]
M6000B-1	IL-6 [HRP]

Limitations

This product is for research use only and is not approved for use in humans or in clinical diagnosis. Peptides and proteins are guaranteed for 3 months from date of receipt.

For more information on our 100% guarantee, please visit www.novusbio.com/guarantee

Earn gift cards/discounts by submitting a review: www.novusbio.com/reviews/submit/NBP2-35206

Earn gift cards/discounts by submitting a publication using this product:
www.novusbio.com/publications

