

Product Datasheet

Recombinant Human Serpin F1/PEDF Protein NBP2-35205-5ug

Unit Size: 5ug

Store at -20 to -70C as supplied. After reconstitution, store at 2 to 8C for 1 month and at -20 to -70C for long term storage. Avoid repeated freeze-thaw cycles.

www.novusbio.com



technical@novusbio.com

Protocols, Publications, Related Products, Reviews, Research Tools and Images at:
www.novusbio.com/NBP2-35205

Updated 1/25/2025 v.20.1

Earn rewards for product
reviews and publications.

Submit a publication at www.novusbio.com/publications

Submit a review at www.novusbio.com/reviews/destination/NBP2-35205



NBP2-35205-5ug**Recombinant Human Serpin F1/PEDF Protein**

Product Information	
Unit Size	5ug
Concentration	Lyoph
Storage	Store at -20 to -70C as supplied. After reconstitution, store at 2 to 8C for 1 month and at -20 to -70C for long term storage. Avoid repeated freeze-thaw cycles.
Preservative	No Preservative
Reconstitution Instructions	Recommended to centrifuge prior to opening. Reconstitute in sterile distilled water or aqueous buffer containing 0.1% BSA to a concentration of 0.1-1.0mg/mL.
Purity	> 97 % pure by SDS-PAGE and HPLC
Buffer	Lyophilized from a 0.2 um filtered concentrated solution in 20 mM PB, pH 7.4, 150 mM NaCl.
Target Molecular Weight	44.4 kDa

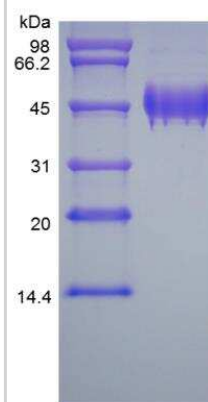
Product Description	
Description	<p>A single non-glycosylated polypeptide chain containing 399 amino acids corresponding to Serpin F1/PEDF Source: <i>E. coli</i></p> <p>Uniprot ID: P36955</p> <p>Amino Acid Sequence: QNPASPPEEG SPDPDSTGAL VEEEDPFFKV PVNKLAAVS NFGYDLYRVR SSTSPPTNVL LSPLSVATAL SALSLGAEQR TESIHRALY YDLISSPDH GTYKELLDTV TAPQKNLKSA SRIVFEKKLR IKSSFVAPLE KSYGTRPRVL TGNPRLDLQE INNWVQAQMK GKLARSTKEI PDEISILLG VAHFKGQWVT KFDSRKTSLE DFYLDEERTV RVPMMSDPKA VLRYGLDSDL SCKIAQLPLT GSMSIIFFLP LKVTQNLTLI EESLTSEFIH DIDRELKTQV AVLTVPKLL SYEGEVTKSL QEMKLQSLFD SPDFSKITGK PIKLTQVEHR AGFEWNEDGA GTTPSPGLQP AHLTFPLDYH LNQPFI FVLR DTDGALLFI GKILDPRGP</p>
Gene ID	5176
Gene Symbol	SERPINF1
Species	Human
Details of Functionality	PEDF Protein is fully biologically active when compared to standard. The ED50 as determined by its ability to enhance the adhesion of human Saos2 cells to bovine Collagen I coated plate is less than 2 ng/ml, corresponding to a specific activity of > 5.0 x 10 ⁵ IU/mg.
Endotoxin Note	Less than 1 EU/ug of Serpin F1/PEDF as determined by LAL method.

Product Application Details	
Applications	SDS-Page, Bioactivity
Recommended Dilutions	SDS-Page, Bioactivity



Images

SDS-Page: Human Serpin F1/PEDF Protein [NBP2-35205]





Novus Biologicals USA

10730 E. Briarwood Avenue
Centennial, CO 80112
USA
Phone: 303.730.1950
Toll Free: 1.888.506.6887
Fax: 303.730.1966
nb-customerservice@bio-techne.com

Bio-Techne Canada

21 Canmotor Ave
Toronto, ON M8Z 4E6
Canada
Phone: 905.827.6400
Toll Free: 855.668.8722
Fax: 905.827.6402
canada.inquires@bio-techne.com

Bio-Techne Ltd

19 Barton Lane
Abingdon Science Park
Abingdon, OX14 3NB, United Kingdom
Phone: (44) (0) 1235 529449
Free Phone: 0800 37 34 15
Fax: (44) (0) 1235 533420
info.EMEA@bio-techne.com

General Contact Information

www.novusbio.com
Technical Support: nb-technical@bio-techne.com
Orders: nb-customerservice@bio-techne.com
General: novus@novusbio.com

Products Related to NBP2-35205-5ug

NBP1-83972PEP	Serpin F1/PEDF Recombinant Protein Antigen
210-TA-005	TNF-alpha [Unconjugated]
DY1177-05	Serpin F1/PEDF [Biotin]
DVE00	VEGF [HRP]

Limitations

This product is for research use only and is not approved for use in humans or in clinical diagnosis. Peptides and proteins are guaranteed for 3 months from date of receipt.

For more information on our 100% guarantee, please visit www.novusbio.com/guarantee

Earn gift cards/discounts by submitting a review: www.novusbio.com/reviews/submit/NBP2-35205

Earn gift cards/discounts by submitting a publication using this product:
www.novusbio.com/publications

