

Product Datasheet

Recombinant Mouse Cardiotrophin-1/CT-1 Protein NBP2-35170-100ug

Unit Size: 100 ug

Store at -20 to -70C as supplied. After reconstitution, store at 2 to 8C for 1 month and at -20 to -70C for long term storage. Avoid repeated freeze-thaw cycles.

www.novusbio.com



technical@novusbio.com

Protocols, Publications, Related Products, Reviews, Research Tools and Images at:
www.novusbio.com/NBP2-35170

Updated 1/25/2025 v.20.1

Earn rewards for product
reviews and publications.

Submit a publication at www.novusbio.com/publications

Submit a review at www.novusbio.com/reviews/destination/NBP2-35170



NBP2-35170-100ug

Recombinant Mouse Cardiotoxin-1/CT-1 Protein

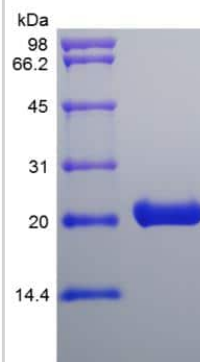
Product Information	
Unit Size	100 ug
Concentration	Lyoph
Storage	Store at -20 to -70C as supplied. After reconstitution, store at 2 to 8C for 1 month and at -20 to -70C for long term storage. Avoid repeated freeze-thaw cycles.
Preservative	No Preservative
Reconstitution Instructions	Recommended to centrifuge prior to opening. Reconstitute in sterile distilled water or aqueous buffer containing 0.1% BSA to a concentration of 0.1-1.0mg/mL.
Purity	>95%, by SDS-PAGE and HPLC
Buffer	Lyophilized from a 0.2 um filtered concentrated solution in 20 mM Tris, 300 mM NaCl, pH 8.5.
Target Molecular Weight	21.5 kDa

Product Description	
Description	A single non-glycosylated polypeptide chain containing 203 amino acids corresponding to Cardiotoxin-1/CT-1 Source: <i>E. coli</i> Uniprot ID: Q60753 Amino Acid Sequence: MSQREGSLED HQTDSISFL PHLEAKIRQT HNLARLLTKY AEQLLEEVQ QGEPFGLPG FSPRLPLAG LSGPAPSHAG LPVSELRQD AAALSVLPAL LDAVRRRQAE LNPRAPRLLR SLEDAARQVR ALGAAVETVL AALGAAARGP GPEPVTATL FTANSTAGIF SAKVLGFHVC GLYGEWVSRT EGDGQLVPG GVA
Gene ID	1489
Gene Symbol	CTF1
Species	Mouse
Details of Functionality	Cardiotoxin-1/CT-1 protein is fully biologically active when compared to standard. The ED50 as determined by a cell proliferation assay using human TF1 cells is less than 0.5 ng/ml, corresponding to a specific activity of > 2.0 x 10 ⁶ IU/mg.
Endotoxin Note	Less than 1 EU/ug of Cardiotoxin-1/CT-1 as determined by LAL method.

Product Application Details	
Applications	SDS-Page, Bioactivity
Recommended Dilutions	SDS-Page, Bioactivity

Images

SDS-Page: Mouse Cardiotrophin-1/CT-1 Protein [NBP2-35170]





Novus Biologicals USA

10730 E. Briarwood Avenue
Centennial, CO 80112
USA
Phone: 303.730.1950
Toll Free: 1.888.506.6887
Fax: 303.730.1966
nb-customerservice@bio-techne.com

Bio-Techne Canada

21 Canmotor Ave
Toronto, ON M8Z 4E6
Canada
Phone: 905.827.6400
Toll Free: 855.668.8722
Fax: 905.827.6402
canada.inquires@bio-techne.com

Bio-Techne Ltd

19 Barton Lane
Abingdon Science Park
Abingdon, OX14 3NB, United Kingdom
Phone: (44) (0) 1235 529449
Free Phone: 0800 37 34 15
Fax: (44) (0) 1235 533420
info.EMEA@bio-techne.com

General Contact Information

www.novusbio.com
Technical Support: nb-technical@bio-techne.com
Orders: nb-customerservice@bio-techne.com
General: novus@novusbio.com

Products Related to NBP2-35170-100ug

NBP2-35292-100ug	Recombinant Rat Cardiotrophin-1/CT-1 Protein
M6000B-1	IL-6 [HRP]
612-CD-010	Cardiotrophin-1/CT-1
NBP2-22203	ERK1 Antibody (1E5) - BSA Free

Limitations

This product is for research use only and is not approved for use in humans or in clinical diagnosis. Peptides and proteins are guaranteed for 3 months from date of receipt.

For more information on our 100% guarantee, please visit www.novusbio.com/guarantee

Earn gift cards/discounts by submitting a review: www.novusbio.com/reviews/submit/NBP2-35170

Earn gift cards/discounts by submitting a publication using this product:
www.novusbio.com/publications

