

Product Datasheet

Recombinant Mouse CXCL16 Protein NBP2-35166-5ug

Unit Size: 5ug

Store at -20 to -70C as supplied. After reconstitution, store at 2 to 8C for 1 month and at -20 to -70C for long term storage. Avoid repeated freeze-thaw cycles.

www.novusbio.com



technical@novusbio.com

Protocols, Publications, Related Products, Reviews, Research Tools and Images at:
www.novusbio.com/NBP2-35166

Updated 1/25/2025 v.20.1

Earn rewards for product
reviews and publications.

Submit a publication at www.novusbio.com/publications

Submit a review at www.novusbio.com/reviews/destination/NBP2-35166



NBP2-35166-5ug

Recombinant Mouse CXCL16 Protein

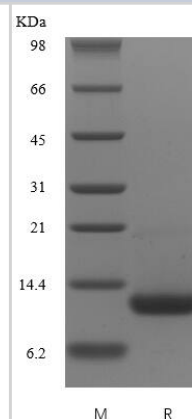
Product Information	
Unit Size	5ug
Concentration	Lyoph
Storage	Store at -20 to -70C as supplied. After reconstitution, store at 2 to 8C for 1 month and at -20 to -70C for long term storage. Avoid repeated freeze-thaw cycles.
Preservative	No Preservative
Reconstitution Instructions	Recommended to centrifuge prior to opening. Reconstitute in sterile distilled water or aqueous buffer containing 0.1% BSA to a concentration of 0.1-1.0mg/mL.
Purity	> 98 % pure by SDS-PAGE and HPLC
Buffer	Lyophilized from a 0.2 um filtered concentrated solution in PBS.
Target Molecular Weight	9.9 kDa

Product Description	
Description	A single non-glycosylated polypeptide chain containing 88 amino acids corresponding to CXCL16 Source: <i>E. coli</i> Uniprot ID: Q8BSU2 Amino Acid Sequence: NQGSVAGSCS CDRTISSGTQ IPQGTL DHIR KYLKAFHRCP FFIRFQLQSK SVCVGGSDQW VRELVD CFER KECGTGHGKS FHHQK HLP
Gene ID	58191
Gene Symbol	CXCL16
Species	Mouse
Details of Functionality	CXCL16 Protein is fully biologically active when compared to standard. The biological activity determined by a chemotaxis bioassay using murine lymphocytes is in a concentration of 20-1000 ng/ml.
Endotoxin Note	Less than 1 EU/ug of CXCL16 as determined by LAL method.

Product Application Details	
Applications	SDS-Page, Bioactivity
Recommended Dilutions	SDS-Page, Bioactivity

Images

SDS-Page: Recombinant Mouse CXCL16 Protein [NBP2-35166]





Novus Biologicals USA

10730 E. Briarwood Avenue
Centennial, CO 80112
USA
Phone: 303.730.1950
Toll Free: 1.888.506.6887
Fax: 303.730.1966
nb-customerservice@bio-techne.com

Bio-Techne Canada

21 Canmotor Ave
Toronto, ON M8Z 4E6
Canada
Phone: 905.827.6400
Toll Free: 855.668.8722
Fax: 905.827.6402
canada.inquires@bio-techne.com

Bio-Techne Ltd

19 Barton Lane
Abingdon Science Park
Abingdon, OX14 3NB, United Kingdom
Phone: (44) (0) 1235 529449
Free Phone: 0800 37 34 15
Fax: (44) (0) 1235 533420
info.EMEA@bio-techne.com

General Contact Information

www.novusbio.com
Technical Support: nb-technical@bio-techne.com
Orders: nb-customerservice@bio-techne.com
General: novus@novusbio.com

Products Related to NBP2-35166-5ug

NBP2-39072PEP	CXCL16 Recombinant Protein Antigen
210-TA-005	TNF-alpha [Unconjugated]
AF976	CXCL16 Antibody [Unconjugated]
M6000B-1	IL-6 [HRP]

Limitations

This product is for research use only and is not approved for use in humans or in clinical diagnosis. Peptides and proteins are guaranteed for 3 months from date of receipt.

For more information on our 100% guarantee, please visit www.novusbio.com/guarantee

Earn gift cards/discounts by submitting a review: www.novusbio.com/reviews/submit/NBP2-35166

Earn gift cards/discounts by submitting a publication using this product:
www.novusbio.com/publications

