

Product Datasheet

Recombinant Mouse Prolactin Protein NBP2-35120-10ug

Unit Size: 10ug

Store at -20 to -70C as supplied. After reconstitution, store at 2 to 8C for 1 month and at -20 to -70C for long term storage. Avoid repeated freeze-thaw cycles.

www.novusbio.com



technical@novusbio.com

Protocols, Publications, Related Products, Reviews, Research Tools and Images at:
www.novusbio.com/NBP2-35120

Updated 1/25/2025 v.20.1

Earn rewards for product
reviews and publications.

Submit a publication at www.novusbio.com/publications

Submit a review at www.novusbio.com/reviews/destination/NBP2-35120



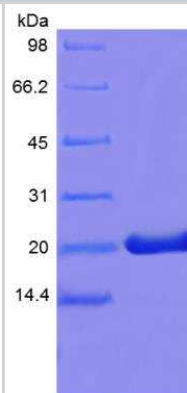
NBP2-35120-10ug

Recombinant Mouse Prolactin Protein

Product Information	
Unit Size	10ug
Concentration	Lyoph
Storage	Store at -20 to -70C as supplied. After reconstitution, store at 2 to 8C for 1 month and at -20 to -70C for long term storage. Avoid repeated freeze-thaw cycles.
Preservative	No Preservative
Reconstitution Instructions	Recommended to centrifuge prior to opening. Reconstitute in sterile distilled water or aqueous buffer containing 0.1% BSA to a concentration of 0.1-1.0mg/mL.
Purity	> 98 % pure by SDS-PAGE and HPLC
Buffer	Lyophilized from a 0.2 um filtered concentrated solution in PBS, pH 7.4.
Target Molecular Weight	22.4 kDa
Product Description	
Description	<p>A single non-glycosylated polypeptide chain containing 197 amino acids corresponding to Prolactin Source: <i>E. coli</i></p> <p>Uniprot ID: P06879</p> <p>Amino Acid Sequence: LPICSAGDCQ TSLRELFDRV VILSHYIHTL YTDMFIEFDK QYVQDREFMV KVINDCPTSS LATPEDKEQA LKVPPEVLLN LILSLVQSSS DPLFQLITGV GGIQEAP EYI LSRAKEIEEQ NKQLLEGVEK IISQAYPEAK GNGIYFVWSQ LPSLQGVDEE SKILSLRNTI RCLRRDSHKV DNFLKVLRCQ IAHQNNC</p> <p>Use a manual defrost freezer and avoid repeated freeze-thaw cycles.</p> <ul style="list-style-type: none"> - 12 months from date of receipt, -20 to -70 °C as supplied. - 1 month, 2 to 8 °C under sterile conditions after reconstitution. - 3 months, -20 to -70 °C under sterile conditions after reconstitution.
Gene ID	5617
Gene Symbol	PRL
Species	Mouse
Details of Functionality	Prolactin protein is fully biologically active when compared to standard. The ED50 as determined by a cell proliferation assay using rat Nb2-11 cells is less than 1.0 ng/ml, corresponding to a specific activity of > 1.0 x10 ⁶ IU/mg
Endotoxin Note	Less than 0.1 EU/ug of Prolactin as determined by LAL method.
Product Application Details	
Applications	SDS-Page, Bioactivity
Recommended Dilutions	SDS-Page, Bioactivity

Images

SDS-Page: Mouse Prolactin Protein [NBP2-35120]





Novus Biologicals USA

10730 E. Briarwood Avenue
Centennial, CO 80112
USA
Phone: 303.730.1950
Toll Free: 1.888.506.6887
Fax: 303.730.1966
nb-customerservice@bio-techne.com

Bio-Techne Canada

21 Canmotor Ave
Toronto, ON M8Z 4E6
Canada
Phone: 905.827.6400
Toll Free: 855.668.8722
Fax: 905.827.6402
canada.inquires@bio-techne.com

Bio-Techne Ltd

19 Barton Lane
Abingdon Science Park
Abingdon, OX14 3NB, United Kingdom
Phone: (44) (0) 1235 529449
Free Phone: 0800 37 34 15
Fax: (44) (0) 1235 533420
info.EMEA@bio-techne.com

General Contact Information

www.novusbio.com
Technical Support: nb-technical@bio-techne.com
Orders: nb-customerservice@bio-techne.com
General: novus@novusbio.com

Products Related to NBP2-35120-10ug

NBP2-35287-10ug	Recombinant Rat Prolactin Protein
291-G1-200	IGF-I/IGF-1 [Unconjugated]
AF1445	Prolactin Antibody [Unconjugated]
AF2168	STAT5a/b Antibody [Unconjugated] - Pan Specific

Limitations

This product is for research use only and is not approved for use in humans or in clinical diagnosis. Peptides and proteins are guaranteed for 3 months from date of receipt.

For more information on our 100% guarantee, please visit www.novusbio.com/guarantee

Earn gift cards/discounts by submitting a review: www.novusbio.com/reviews/submit/NBP2-35120

Earn gift cards/discounts by submitting a publication using this product:
www.novusbio.com/publications

