

Product Datasheet

Recombinant Human CCL15/MIP-1 delta Protein NBP2-35043-5ug

Unit Size: 5ug

Store at -20 to -70C as supplied. After reconstitution, store at 2 to 8C for 1 month and at -20 to -70C for long term storage. Avoid repeated freeze-thaw cycles.

www.novusbio.com



technical@novusbio.com

Protocols, Publications, Related Products, Reviews, Research Tools and Images at:
www.novusbio.com/NBP2-35043

Updated 1/25/2025 v.20.1

Earn rewards for product
reviews and publications.

Submit a publication at www.novusbio.com/publications

Submit a review at www.novusbio.com/reviews/destination/NBP2-35043



NBP2-35043-5ug

Recombinant Human CCL15/MIP-1 delta Protein

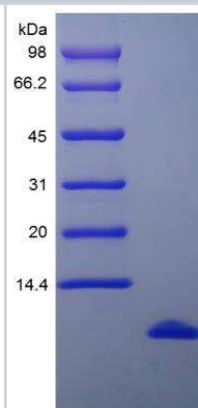
Product Information	
Unit Size	5ug
Concentration	Lyoph
Storage	Store at -20 to -70C as supplied. After reconstitution, store at 2 to 8C for 1 month and at -20 to -70C for long term storage. Avoid repeated freeze-thaw cycles.
Preservative	No Preservative
Reconstitution Instructions	Recommended to centrifuge prior to opening. Reconstitute in sterile distilled water or aqueous buffer containing 0.1% BSA to a concentration of 0.1-1.0mg/mL.
Purity	> 98 % pure by SDS-PAGE and HPLC
Buffer	Lyophilized from a 0.2 um filtered concentrated solution in 1 x PBS, pH 7.2.
Target Molecular Weight	7.4 kDa

Product Description	
Description	A single non-glycosylated polypeptide chain containing 68 amino acids corresponding to CCL15/MIP-1 delta Source: <i>E. coli</i> Uniprot ID: Q16663 Amino Acid Sequence: SFHFAADCCT SYISQSIPCS LMKSYFETSS ECKSPGVIFL TTKGRQVCAK PSGPGVQDCM KKLKPYSI
Gene ID	6359
Gene Symbol	CCL15
Species	Human
Details of Functionality	CCL15/MIP-1 delta protein is fully biologically active when compared to standard. The biological activity determined by a chemotaxis bioassay using human T-lymphocytes is in a concentration range of 1.0-10 ng/ml.
Endotoxin Note	Less than 0.1 EU/ug of CCL15/MIP-1 delta as determined by LAL method.

Product Application Details	
Applications	SDS-Page, Bioactivity
Recommended Dilutions	SDS-Page, Bioactivity

Images

SDS-Page: Human CCL15/MIP-1 delta 68 a.a Protein [NBP2-35043]





Novus Biologicals USA

10730 E. Briarwood Avenue
Centennial, CO 80112
USA
Phone: 303.730.1950
Toll Free: 1.888.506.6887
Fax: 303.730.1966
nb-customerservice@bio-techne.com

Bio-Techne Canada

21 Canmotor Ave
Toronto, ON M8Z 4E6
Canada
Phone: 905.827.6400
Toll Free: 855.668.8722
Fax: 905.827.6402
canada.inquires@bio-techne.com

Bio-Techne Ltd

19 Barton Lane
Abingdon Science Park
Abingdon, OX14 3NB, United Kingdom
Phone: (44) (0) 1235 529449
Free Phone: 0800 37 34 15
Fax: (44) (0) 1235 533420
info.EMEA@bio-techne.com

General Contact Information

www.novusbio.com
Technical Support: nb-technical@bio-techne.com
Orders: nb-customerservice@bio-techne.com
General: novus@novusbio.com

Products Related to NBP2-35043-5ug

NBP2-35065-5ug	Recombinant Human CCL15/MIP-1 delta Protein
DCP00	CCL2/JE/MCP-1 [HRP]
MAB363	CCL15/MIP-1 delta Antibody (52130) [Unconjugated]
MAB208-100	CXCL8/IL-8 Antibody (6217) [Unconjugated]

Limitations

This product is for research use only and is not approved for use in humans or in clinical diagnosis. Peptides and proteins are guaranteed for 3 months from date of receipt.

For more information on our 100% guarantee, please visit www.novusbio.com/guarantee

Earn gift cards/discounts by submitting a review: www.novusbio.com/reviews/submit/NBP2-35043

Earn gift cards/discounts by submitting a publication using this product:
www.novusbio.com/publications

