

# Product Datasheet

## Recombinant Human CCL20/MIP-3 alpha Protein NBP2-35025-5ug

Unit Size: 5ug

Store at -20 to -70C as supplied. After reconstitution, store at 2 to 8C for 1 month and at -20 to -70C for long term storage. Avoid repeated freeze-thaw cycles.

[www.novusbio.com](http://www.novusbio.com)



[technical@novusbio.com](mailto:technical@novusbio.com)

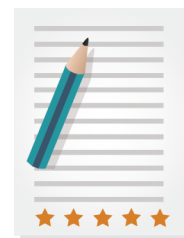
Protocols, Publications, Related Products, Reviews, Research Tools and Images at:  
[www.novusbio.com/NBP2-35025](http://www.novusbio.com/NBP2-35025)

Updated 1/25/2025 v.20.1

Earn rewards for product  
reviews and publications.

Submit a publication at [www.novusbio.com/publications](http://www.novusbio.com/publications)

Submit a review at [www.novusbio.com/reviews/destination/NBP2-35025](http://www.novusbio.com/reviews/destination/NBP2-35025)



**NBP2-35025-5ug**

Recombinant Human CCL20/MIP-3 alpha Protein

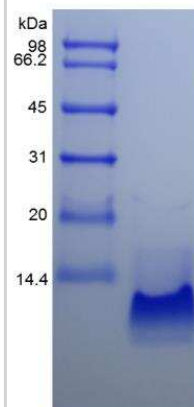
Product Information	
Unit Size	5ug
Concentration	Lyoph
Storage	Store at -20 to -70C as supplied. After reconstitution, store at 2 to 8C for 1 month and at -20 to -70C for long term storage. Avoid repeated freeze-thaw cycles.
Preservative	No Preservative
Reconstitution Instructions	Recommended to centrifuge prior to opening. Reconstitute in sterile distilled water or aqueous buffer containing 0.1% BSA to a concentration of 0.1-1.0mg/mL.
Purity	> 97 % pure by SDS-PAGE and HPLC
Buffer	Lyophilized from a 0.2 um filtered concentrated solution in 20 mM PB, pH 7.4, 100 mM NaCl.
Target Molecular Weight	8 kDa

Product Description	
Description	A single non-glycosylated polypeptide chain containing 70 amino acids corresponding to CCL20/MIP-3 alpha <b>Source:</b> <i>E. coli</i>  <b>Uniprot ID:</b> <i>P78556</i>  <b>Amino Acid Sequence:</b> <i>ASNFDCCLGY TDRILHPKFI VGFTRQLANE GCDINAIIFH TKKKLSVCAN PKQTWVKYIV RLLSKKVKNM</i>
Gene ID	6364
Gene Symbol	CCL20
Species	Human
Details of Functionality	Macrophage Inflammatory Protein 3 alpha Protein is fully biologically active when compared to standard. The biological activity determined by a chemotaxis bioassay using human T-lymphocytes is in a concentration range of 10-50 ng/ml.
Endotoxin Note	Less than 1 EU/ug of CCL20/MIP-3 alpha as determined by LAL method.

Product Application Details	
Applications	SDS-Page, Bioactivity
Recommended Dilutions	SDS-Page, Bioactivity

**Images**

SDS-Page: Human CCL20/MIP-3 alpha Protein [NBP2-35025]





### **Novus Biologicals USA**

10730 E. Briarwood Avenue  
Centennial, CO 80112  
USA  
Phone: 303.730.1950  
Toll Free: 1.888.506.6887  
Fax: 303.730.1966  
nb-customerservice@bio-techne.com

### **Bio-Techne Canada**

21 Canmotor Ave  
Toronto, ON M8Z 4E6  
Canada  
Phone: 905.827.6400  
Toll Free: 855.668.8722  
Fax: 905.827.6402  
canada.inquires@bio-techne.com

### **Bio-Techne Ltd**

19 Barton Lane  
Abingdon Science Park  
Abingdon, OX14 3NB, United Kingdom  
Phone: (44) (0) 1235 529449  
Free Phone: 0800 37 34 15  
Fax: (44) (0) 1235 533420  
info.EMEA@bio-techne.com

### **General Contact Information**

www.novusbio.com  
Technical Support: nb-technical@bio-techne.com  
Orders: nb-customerservice@bio-techne.com  
General: novus@novusbio.com

### **Products Related to NBP2-35025-5ug**

---

NBP2-35091-5ug	Recombinant Mouse CCL20/MIP-3 alpha Protein
210-TA-005	TNF-alpha [Unconjugated]
DM3A00	CCL20/MIP-3 alpha [HRP]
M6000B-1	IL-6 [HRP]

---

### **Limitations**

This product is for research use only and is not approved for use in humans or in clinical diagnosis. Peptides and proteins are guaranteed for 3 months from date of receipt.

For more information on our 100% guarantee, please visit [www.novusbio.com/guarantee](http://www.novusbio.com/guarantee)

Earn gift cards/discounts by submitting a review: [www.novusbio.com/reviews/submit/NBP2-35025](http://www.novusbio.com/reviews/submit/NBP2-35025)

Earn gift cards/discounts by submitting a publication using this product:  
[www.novusbio.com/publications](http://www.novusbio.com/publications)

