

Product Datasheet

Recombinant Human CCL21/6Ckine Protein NBP2-35002-5ug

Unit Size: 5ug

Store at -20 to -70C as supplied. After reconstitution, store at 2 to 8C for 1 month and at -20 to -70C for long term storage. Avoid repeated freeze-thaw cycles.

www.novusbio.com



technical@novusbio.com

Protocols, Publications, Related Products, Reviews, Research Tools and Images at:
www.novusbio.com/NBP2-35002

Updated 1/25/2025 v.20.1

Earn rewards for product
reviews and publications.

Submit a publication at www.novusbio.com/publications

Submit a review at www.novusbio.com/reviews/destination/NBP2-35002



NBP2-35002-5ug

Recombinant Human CCL21/6Ckine Protein

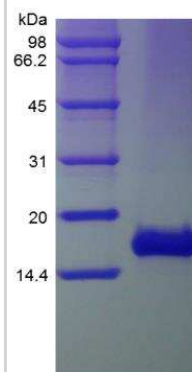
| Product Information | |
|-----------------------------|---|
| Unit Size | 5ug |
| Concentration | Lyoph |
| Storage | Store at -20 to -70C as supplied. After reconstitution, store at 2 to 8C for 1 month and at -20 to -70C for long term storage. Avoid repeated freeze-thaw cycles. |
| Preservative | No Preservative |
| Reconstitution Instructions | Recommended to centrifuge prior to opening. Reconstitute in sterile distilled water or aqueous buffer containing 0.1% BSA to a concentration of 0.1-1.0mg/mL. |
| Purity | >95%, by SDS-PAGE |
| Buffer | Lyophilized from a 0.2 um filtered concentrated solution in 2x PBS, pH 7.0. |
| Target Molecular Weight | 12.2 kDa |

| Product Description | |
|--------------------------|--|
| Description | A single, non-glycosylated polypeptide chain containing 111 amino acids corresponding to CCL21/6Ckine Source: <i>E. coli</i> Uniprot ID: O00585 Amino Acid Sequence: SDGGAQDCCL KYSQRKIPAK VVRSYRKQEP SLGCSIPAIL FLPRKRSQAE LCADPKELWV QQLMQHLDKT PSPQKPAQGC RKDRGASKTG KKGKGSKGCK RTERSQTPKG P |
| Gene ID | 6366 |
| Gene Symbol | CCL21 |
| Species | Human |
| Details of Functionality | Fully biologically active when compared to standard. The biological activity determined by a chemotaxis bioassay using human lymphocytes is in a concentration range of 10-100 ng/ml. |
| Endotoxin Note | Less than 1 EU/ug of CCL21/6Ckine as determined by LAL method. |

| Product Application Details | |
|-----------------------------|-----------------------|
| Applications | SDS-Page, Bioactivity |
| Recommended Dilutions | SDS-Page, Bioactivity |

Images

SDS-Page: Human CCL21/6Ckine Protein [NBP2-35002]





Novus Biologicals USA

10730 E. Briarwood Avenue
Centennial, CO 80112
USA
Phone: 303.730.1950
Toll Free: 1.888.506.6887
Fax: 303.730.1966
nb-customerservice@bio-techne.com

Bio-Techne Canada

21 Canmotor Ave
Toronto, ON M8Z 4E6
Canada
Phone: 905.827.6400
Toll Free: 855.668.8722
Fax: 905.827.6402
canada.inquires@bio-techne.com

Bio-Techne Ltd

19 Barton Lane
Abingdon Science Park
Abingdon, OX14 3NB, United Kingdom
Phone: (44) (0) 1235 529449
Free Phone: 0800 37 34 15
Fax: (44) (0) 1235 533420
info.EMEA@bio-techne.com

General Contact Information

www.novusbio.com
Technical Support: nb-technical@bio-techne.com
Orders: nb-customerservice@bio-techne.com
General: novus@novusbio.com

Products Related to NBP2-35002-5ug

| | |
|----------------|--|
| NBP2-35179-5ug | Recombinant Mouse CCL21/6Ckine Protein |
| 210-TA-005 | TNF-alpha [Unconjugated] |
| AF457 | CCL21/6Ckine Antibody [Unconjugated] |
| 285-IF-100 | IFN-gamma [Unconjugated] |

Limitations

This product is for research use only and is not approved for use in humans or in clinical diagnosis. Peptides and proteins are guaranteed for 3 months from date of receipt.

For more information on our 100% guarantee, please visit www.novusbio.com/guarantee

Earn gift cards/discounts by submitting a review: www.novusbio.com/reviews/submit/NBP2-35002

Earn gift cards/discounts by submitting a publication using this product:
www.novusbio.com/publications

