

Product Datasheet

Recombinant Human CCL7/MCP-3/MARC Protein NBP2-34972-10ug

Unit Size: 10 ug

Store at -20 to -70C as supplied. After reconstitution, store at 2 to 8C for 1 month and at -20 to -70C for long term storage. Avoid repeated freeze-thaw cycles.

www.novusbio.com



technical@novusbio.com

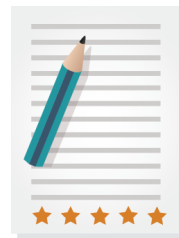
Protocols, Publications, Related Products, Reviews, Research Tools and Images at:
www.novusbio.com/NBP2-34972

Updated 1/25/2025 v.20.1

Earn rewards for product
reviews and publications.

Submit a publication at www.novusbio.com/publications

Submit a review at www.novusbio.com/reviews/destination/NBP2-34972



NBP2-34972-10ug

Recombinant Human CCL7/MCP-3/MARC Protein

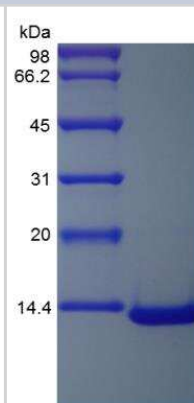
Product Information	
Unit Size	10 ug
Concentration	Lyoph
Storage	Store at -20 to -70C as supplied. After reconstitution, store at 2 to 8C for 1 month and at -20 to -70C for long term storage. Avoid repeated freeze-thaw cycles.
Preservative	No Preservative
Reconstitution Instructions	Recommended to centrifuge prior to opening. Reconstitute in sterile distilled water or aqueous buffer containing 0.1% BSA to a concentration of 0.1-1.0mg/mL.
Purity	> 97 % pure by SDS-PAGE and HPLC
Buffer	Lyophilized from a 0.2 um filtered concentrated solution in 20 mM PB, pH 7.4, 150 mM NaCl.
Target Molecular Weight	9 kDa

Product Description	
Description	A single, non-glycosylated polypeptide chain containing 76 amino acids corresponding to CCL7/MCP-3/MARC Source: <i>E. coli</i> Uniprot ID: P80098 Amino Acid Sequence: QPVGINTSTT CCYRFINKKI PKQRLESYRR TTSSHCPREA VIFKTKLDKE ICADPTQKWV QDFMKHLDKK TQTPKL
Gene ID	6354
Gene Symbol	CCL7
Species	Human
Details of Functionality	MCP3 protein is fully biologically active when compared to standard. The biologically active determined by a chemotaxis bioassay using human monocytes is in a concentration range of 10-100 ng/ml.
Endotoxin Note	Less than 1 EU/ug of CCL7/MCP-3/MARC as determined by LAL method.

Product Application Details	
Applications	SDS-Page, Bioactivity
Recommended Dilutions	SDS-Page, Bioactivity

Images

SDS-Page: Human CCL7/MCP-3/MARC Protein [NBP2-34972]





Novus Biologicals USA

10730 E. Briarwood Avenue
Centennial, CO 80112
USA
Phone: 303.730.1950
Toll Free: 1.888.506.6887
Fax: 303.730.1966
nb-customerservice@bio-techne.com

Bio-Techne Canada

21 Canmotor Ave
Toronto, ON M8Z 4E6
Canada
Phone: 905.827.6400
Toll Free: 855.668.8722
Fax: 905.827.6402
canada.inquires@bio-techne.com

Bio-Techne Ltd

19 Barton Lane
Abingdon Science Park
Abingdon, OX14 3NB, United Kingdom
Phone: (44) (0) 1235 529449
Free Phone: 0800 37 34 15
Fax: (44) (0) 1235 533420
info.EMEA@bio-techne.com

General Contact Information

www.novusbio.com
Technical Support: nb-technical@bio-techne.com
Orders: nb-customerservice@bio-techne.com
General: novus@novusbio.com

Products Related to NBP2-34972-10ug

NBP2-35267-100ug	Recombinant Rat CCL7/MCP-3/MARC Protein
210-TA-005	TNF-alpha [Unconjugated]
AF-456-NA	CCL7/MCP-3/MARC Antibody [Unconjugated]
M6000B-1	IL-6 [HRP]

Limitations

This product is for research use only and is not approved for use in humans or in clinical diagnosis. Peptides and proteins are guaranteed for 3 months from date of receipt.

For more information on our 100% guarantee, please visit www.novusbio.com/guarantee

Earn gift cards/discounts by submitting a review: www.novusbio.com/reviews/submit/NBP2-34972

Earn gift cards/discounts by submitting a publication using this product:
www.novusbio.com/publications

