

# Product Datasheet

## CD68/SR-D1 Antibody (SPM130) - Azide and BSA Free NBP2-34736-0.1mg

Unit Size: 0.1 mg

Store at -20 to -80C. Avoid freeze-thaw cycles.

[www.novusbio.com](http://www.novusbio.com)



[technical@novusbio.com](mailto:technical@novusbio.com)

### Publications: 2

Protocols, Publications, Related Products, Reviews, Research Tools and Images at:  
[www.novusbio.com/NBP2-34736](http://www.novusbio.com/NBP2-34736)

Updated 10/23/2024 v.20.1

Earn rewards for product  
reviews and publications.

Submit a publication at [www.novusbio.com/publications](http://www.novusbio.com/publications)

Submit a review at [www.novusbio.com/reviews/destination/NBP2-34736](http://www.novusbio.com/reviews/destination/NBP2-34736)



**NBP2-34736-0.1mg**

CD68/SR-D1 Antibody (SPM130) - Azide and BSA Free

Product Information	
Unit Size	0.1 mg
Concentration	1.0 mg/ml
Storage	Store at -20 to -80C. Avoid freeze-thaw cycles.
Clonality	Monoclonal
Clone	SPM130
Preservative	No Preservative
Isotype	IgG1 Kappa
Purity	Protein A or G purified
Buffer	10 mM PBS
Target Molecular Weight	110 kDa

Product Description	
Description	1.0 mg/ml of antibody purified from Bioreactor Concentrate by Protein A/G. Prepared in 10mM PBS WITHOUT BSA & azide. Also available at 200 ug/ml WITH BSA & azide (NBP2-32831).  Antibody with azide - store at 2 to 8C. Antibody without azide - store at -20 to -80C.
Host	Mouse
Gene ID	968
Gene Symbol	CD68
Species	Human, Feline, Monkey, Rabbit, Canine (Negative), Chicken (Negative), Porcine (Negative)
Reactivity Notes	Does not react with Porcine, Canine or Chicken.
Marker	Macrophage Marker
Specificity/Sensitivity	This antibody recognizes a glycoprotein of 110kDa, which is identified as CD68. It is important for identifying macrophages in tissue sections. It stains macrophages in a wide variety of human tissues, including Kupffer cells and macrophages in the red pulp of the spleen, in lamina propria of the gut, in lung alveoli, and in bone marrow. It reacts with myeloid precursors and peripheral blood granulocytes. It also reacts with plasmacytoid T cells, which are supposed to be of monocyte/macrophage origin. It shows strong granular cytoplasmic staining of chronic and acute myeloid leukemia and also reacts with rare cases of true histiocytic neoplasia. Lymphomas are negative or show few granules.
Immunogen	Subcellular fraction of human alveolar macrophages

Product Application Details	
Applications	Flow Cytometry, Immunocytochemistry/ Immunofluorescence, Immunohistochemistry, Immunohistochemistry-Frozen, Immunohistochemistry-Paraffin, CyTOF-ready
Recommended Dilutions	Flow Cytometry 0.5-1ug/million cells, Immunohistochemistry, Immunocytochemistry/ Immunofluorescence 0.5-1ug/ml, Immunohistochemistry-Paraffin 0.5-1ug/ml, Immunohistochemistry-Frozen 0.5-1ug/ml, Immunohistochemistry-Paraffin 0.5-1ug/ml, CyTOF-ready

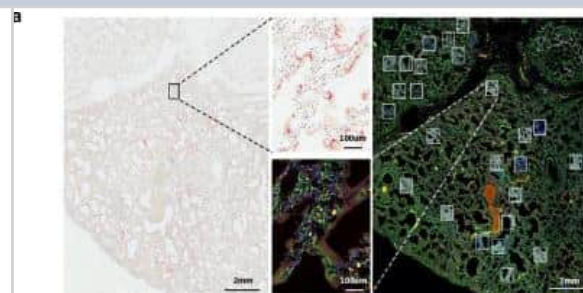


**Application Notes**

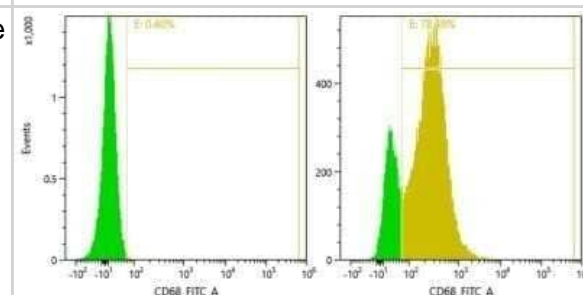
Immunohistochemistry (Formalin-fixed): 1-2ug/ml for 30 minutes at RT. Staining of formalin-fixed tissues requires heating tissue sections in 10mM Tris with 1mM EDTA, pH 9.0, for 45 min at 95C followed by cooling at RT for 20 minutes. Optimal dilution for a specific application should be determined.

**Images**

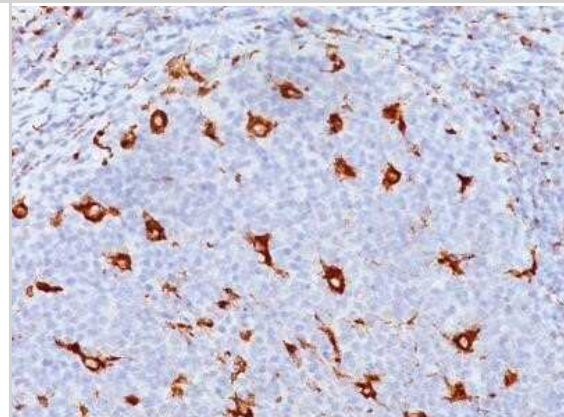
Immunohistochemistry: CD68/SR-D1 Antibody (SPM130) - Azide and BSA Free [NBP2-34736] - Intrapulmonary heterogeneity of SARS-CoV-2 host response. Selection of ROIs. Left) SARS-CoV-2 RNA-ISH staining was used to guide ROI selection of viral positive and viral negative regions. (Scale bar = 2 mm). Right) multi-color immunofluorescence staining for CD45/red (NBP2-34527AF647), CD68/yellow (NBP2-34736AF594), PanCK/green, and DNA/blue were used in parallel to select ROIs. (Scale bar = 2 mm). Example ROIs are shown in insets. (Scale bar = 100 um). Image collected and cropped by CiteAb from the following publication ([//pubmed.ncbi.nlm.nih.gov/33298930/](https://pubmed.ncbi.nlm.nih.gov/33298930/)) licensed under a CC-BY license.



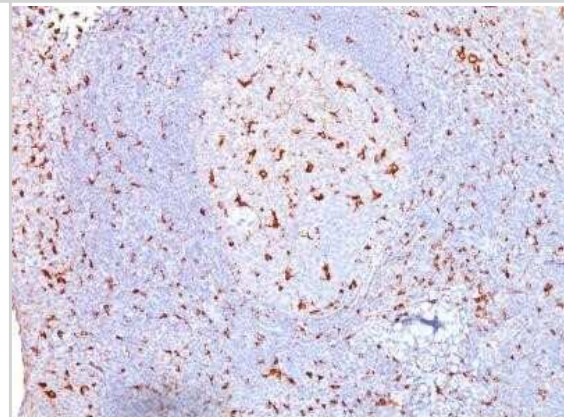
Flow Cytometry: CD68/SR-D1 Antibody (SPM130) - Azide and BSA Free [NBP2-34736] - Mouse peripheral blood cells were unstained (left) or stained (right) with CD68/SR-D1 antibody and anti-biotin alexa-fluor 488 secondary antibody. Image from verified customer review.



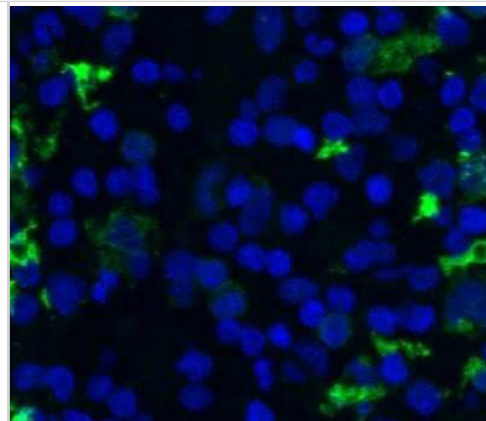
Immunohistochemistry-Paraffin: CD68/SR-D1 Antibody (SPM130) - Azide and BSA Free [NBP2-34736] - Formalin-fixed, paraffin-embedded human tonsil (20X) stained with CD68 MAb (SPM130).



Immunohistochemistry-Paraffin: CD68/SR-D1 Antibody (SPM130) - Azide and BSA Free [NBP2-34736] - Formalin-fixed, paraffin-embedded human tonsil (10X) stained with CD68 MAb (SPM130).



Immunohistochemistry-Frozen: CD68/SR-D1 Antibody (SPM130) - Azide and BSA Free [NBP2-34736] - The antibody was incubated with feline spleen section at 1:100 and the slide was further stained with Alexa secondary antibody. Image was captured with epifluorescence microscope. This image was submitted via customer review.



## Publications

Butler D, Mozsary C, Meydan C et al. Shotgun transcriptome, spatial omics, and isothermal profiling of SARS-CoV-2 infection reveals unique host responses, viral diversification, and drug interactions Nat Commun 2021-03-13 [PMID: 33712587] (IF/IHC, Human)

### Details:

Citation using the Azide and BSA Free format of this antibody.

Desai N, Neyaz A, Szabolcs A et al. Temporal and Spatial Heterogeneity of Host Response to SARS-CoV-2 Pulmonary Infection medRxiv Aug 2 2020 12:00AM [PMID: 32766600] (IHC-P, Human)



### **Novus Biologicals USA**

10730 E. Briarwood Avenue  
Centennial, CO 80112  
USA  
Phone: 303.730.1950  
Toll Free: 1.888.506.6887  
Fax: 303.730.1966  
nb-customerservice@bio-techne.com

### **Bio-Techne Canada**

21 Canmotor Ave  
Toronto, ON M8Z 4E6  
Canada  
Phone: 905.827.6400  
Toll Free: 855.668.8722  
Fax: 905.827.6402  
canada.inquires@bio-techne.com

### **Bio-Techne Ltd**

19 Barton Lane  
Abingdon Science Park  
Abingdon, OX14 3NB, United Kingdom  
Phone: (44) (0) 1235 529449  
Free Phone: 0800 37 34 15  
Fax: (44) (0) 1235 533420  
info.EMEA@bio-techne.com

### **General Contact Information**

www.novusbio.com  
Technical Support: nb-technical@bio-techne.com  
Orders: nb-customerservice@bio-techne.com  
General: novus@novusbio.com

### **Products Related to NBP2-34736-0.1mg**

---

HAF007	Goat anti-Mouse IgG Secondary Antibody [HRP]
NB720-B	Rabbit anti-Mouse IgG (H+L) Secondary Antibody [Biotin]
NBP1-43319-0.5mg	Mouse IgG1 Kappa Isotype Control (P3.6.2.8.1)
NBP2-53081-50ug	Recombinant Human CD68/SR-D1 His Protein

---

### **Limitations**

This product is for research use only and is not approved for use in humans or in clinical diagnosis. Primary Antibodies are guaranteed for 1 year from date of receipt.

For more information on our 100% guarantee, please visit [www.novusbio.com/guarantee](http://www.novusbio.com/guarantee)

Earn gift cards/discounts by submitting a review: [www.novusbio.com/reviews/submit/NBP2-34736](http://www.novusbio.com/reviews/submit/NBP2-34736)

Earn gift cards/discounts by submitting a publication using this product:  
[www.novusbio.com/publications](http://www.novusbio.com/publications)

