

# Product Datasheet

## Cytokeratin 14 Antibody (LL002) - Azide and BSA Free NBP2-34675-0.1mg

Unit Size: 0.1 mg

Store at -20 to -80C. Avoid freeze-thaw cycles.

[www.novusbio.com](http://www.novusbio.com)



[technical@novusbio.com](mailto:technical@novusbio.com)

### Publications: 2

Protocols, Publications, Related Products, Reviews, Research Tools and Images at:  
[www.novusbio.com/NBP2-34675](http://www.novusbio.com/NBP2-34675)

Updated 10/23/2024 v.20.1

Earn rewards for product  
reviews and publications.

Submit a publication at [www.novusbio.com/publications](http://www.novusbio.com/publications)

Submit a review at [www.novusbio.com/reviews/destination/NBP2-34675](http://www.novusbio.com/reviews/destination/NBP2-34675)



**NBP2-34675-0.1mg**

Cytokeratin 14 Antibody (LL002) - Azide and BSA Free

Product Information	
Unit Size	0.1 mg
Concentration	1.0 mg/ml
Storage	Store at -20 to -80C. Avoid freeze-thaw cycles.
Clonality	Monoclonal
Clone	LL002
Preservative	No Preservative
Isotype	IgG3 Kappa
Purity	Protein A or G purified
Buffer	10 mM PBS
Target Molecular Weight	50 kDa

Product Description	
Description	1.0 mg/ml of antibody purified from Bioreactor Concentrate by Protein A/G. Prepared in 10mM PBS WITHOUT BSA & azide. Also available at 200 ug/ml WITH BSA & azide (NBP2-34270).  Antibody with azide - store at 2 to 8C. Antibody without azide - store at -20 to -80C.
Host	Mouse
Gene ID	3861
Gene Symbol	KRT14
Species	Human, Mouse, Rat
Marker	Squamous Cell Marker
Specificity/Sensitivity	Cytokeratin 14 (CK14) belongs to the type I (or A or acidic) subfamily of low molecular weight keratins and exists in combination with keratin 5 (type II or B or basic). CK14 is found in basal cells of squamous epithelia, some glandular epithelia, myoepithelium, and mesothelial cells. Anti-CK14 is useful in differentiating squamous cell carcinomas from poorly differentiated epithelial tumors. Anti-CK14 is one of the specific basal markers for distinguishing between basal and non-basal subtypes of breast carcinomas. Anti-CK14 is also a good marker for differentiation of intraductal from invasive salivary duct carcinoma by the positive staining of basal cells surrounding the in-situ neoplasm as well as for differentiation of benign prostate from prostate carcinoma. Furthermore, this antibody has been useful in separating oncocytic tumors of the kidney from its renal mimics, and in identifying metaplastic carcinomas of the breast.
Immunogen	A synthetic peptide of 15 amino acid from the C-terminus of human Cytokeratin 14. (Uniprot: P02533)

Product Application Details	
Applications	Simple Western, Flow Cytometry, Immunocytochemistry/ Immunofluorescence, Immunohistochemistry, Immunohistochemistry-Frozen, Immunohistochemistry-Paraffin, CyTOF-ready
Recommended Dilutions	Simple Western, Flow Cytometry 0.5-1ug/million cells, Immunohistochemistry, Immunocytochemistry/ Immunofluorescence 1-2ug/ml, Immunohistochemistry-Paraffin 1-2ug/ml, Immunohistochemistry-Frozen 1-2ug/ml, CyTOF-ready

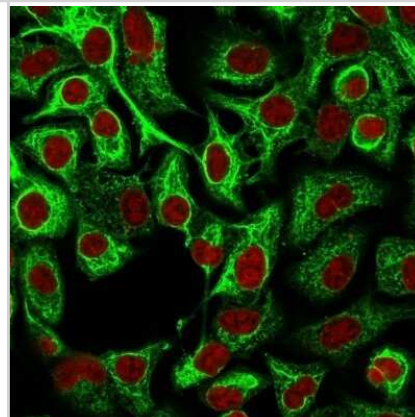


**Application Notes**

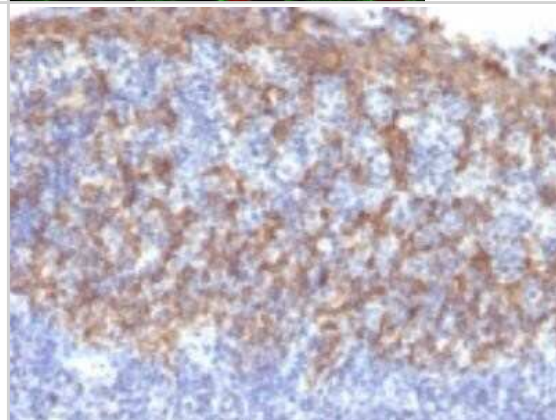
Immunohistochemistry (Formalin-fixed): 1-2ug/ml for 30 min at RT. Staining of formalin-fixed tissues requires heating tissue sections in 10mM Tris with 1mM EDTA, pH 9.0, for 45 min at 95C followed by cooling at RT for 20 minutes. Optimal dilution for a specific application should be determined.

**Images**

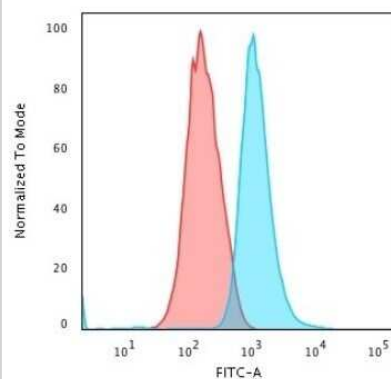
Immunocytochemistry/Immunofluorescence: Cytokeratin 14 Antibody (LL002) - Azide and BSA Free [NBP2-34675] - Immunofluorescence Analysis of A549 cells labeling CK14 with Cytokeratin 14 Antibody (LL002) followed by Goat anti-Mouse IgG-CF488 (Green). The nuclear counterstain is Red Dot (Red).



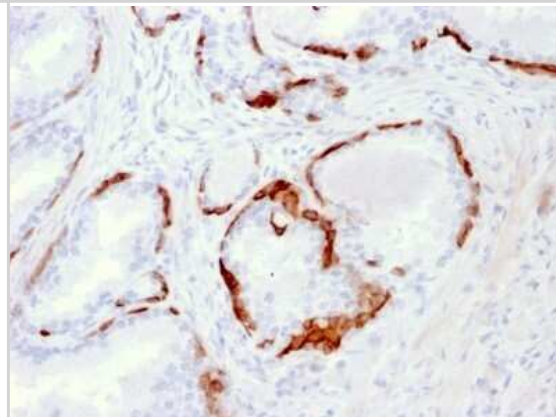
Immunohistochemistry-Paraffin: Cytokeratin 14 Antibody (LL002) - Azide and BSA Free [NBP2-34675] - Formalin-fixed, paraffin-embedded human Prostate stained with Cytokeratin 14 Monoclonal Antibody (LL002)



Flow Cytometry: Cytokeratin 14 Antibody (LL002) - Azide and BSA Free [NBP2-34675] - Flow Cytometric Analysis of trypsinized MeOH-fixed HeLa cells using Cytokeratin 14 Antibody (LL002) followed by Goat anti-Mouse IgG-CF488 (Blue); Isotype Control (Red).



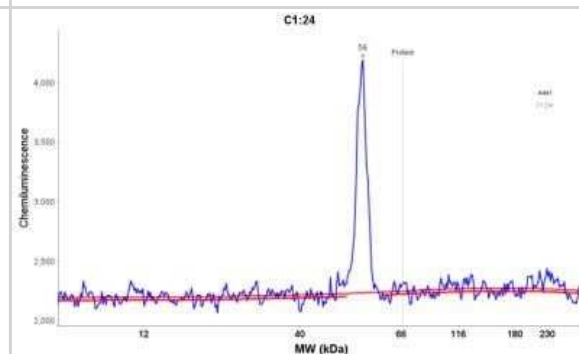
Immunohistochemistry-Paraffin: Cytokeratin 14 Antibody (LL002) - Azide and BSA Free [NBP2-34675] - Formalin-fixed, paraffin-embedded human Prostate Carcinoma stained with Cytokeratin 14 Antibody (LL002).



Simple Western: Cytokeratin 14 Antibody (LL002) - Azide and BSA Free [NBP2-34675] - Simple Western lane view shows a specific band for Cytokeratin 14 in 0.2 mg/ml of A431 lysate(s). This experiment was performed under reducing conditions using the 12-230 kDa separation system.



Simple Western: Cytokeratin 14 Antibody (LL002) - Azide and BSA Free [NBP2-34675] - Electropherogram image of the corresponding Simple Western lane. Cytokeratin 14 antibody was used at 10 ug/ml dilution of A431 lysates(s) respectively.



## Publications

Sun T, Hirakawa Y, Murad F et al. A proposed grading system for desmoplasia in cutaneous squamous cell carcinoma predicts death from disease The Journal of investigative dermatology 2023-07-28 [PMID: 37517515]

Wiraja C, Zhu Y, et al. Framework nucleic acids as programmable carrier for transdermal drug delivery. Nat Commun 2019-03-08 [PMID: 30850596] (IHC-Fr, Human)



### **Novus Biologicals USA**

10730 E. Briarwood Avenue  
Centennial, CO 80112  
USA  
Phone: 303.730.1950  
Toll Free: 1.888.506.6887  
Fax: 303.730.1966  
nb-customerservice@bio-techne.com

### **Bio-Techne Canada**

21 Canmotor Ave  
Toronto, ON M8Z 4E6  
Canada  
Phone: 905.827.6400  
Toll Free: 855.668.8722  
Fax: 905.827.6402  
canada.inquires@bio-techne.com

### **Bio-Techne Ltd**

19 Barton Lane  
Abingdon Science Park  
Abingdon, OX14 3NB, United Kingdom  
Phone: (44) (0) 1235 529449  
Free Phone: 0800 37 34 15  
Fax: (44) (0) 1235 533420  
info.EMEA@bio-techne.com

### **General Contact Information**

www.novusbio.com  
Technical Support: nb-technical@bio-techne.com  
Orders: nb-customerservice@bio-techne.com  
General: novus@novusbio.com

### **Products Related to NBP2-34675-0.1mg**

---

HAF007	Goat anti-Mouse IgG Secondary Antibody [HRP]
NB720-B	Rabbit anti-Mouse IgG (H+L) Secondary Antibody [Biotin]
NBP1-96978	Mouse IgG3 Kappa Light Chain Isotype Control (MG3K)
NBP1-72467-100ug	Recombinant Human Cytokeratin 14 His Protein

---

### **Limitations**

This product is for research use only and is not approved for use in humans or in clinical diagnosis. Primary Antibodies are guaranteed for 1 year from date of receipt.

For more information on our 100% guarantee, please visit [www.novusbio.com/guarantee](http://www.novusbio.com/guarantee)

Earn gift cards/discounts by submitting a review: [www.novusbio.com/reviews/submit/NBP2-34675](http://www.novusbio.com/reviews/submit/NBP2-34675)

Earn gift cards/discounts by submitting a publication using this product:  
[www.novusbio.com/publications](http://www.novusbio.com/publications)

