

Product Datasheet

HSP60 Antibody (LK1) - Azide and BSA Free NBP2-34670-0.1mg

Unit Size: 0.1 mg

Store at -20 to -80C. Avoid freeze-thaw cycles.

www.novusbio.com



technical@novusbio.com

Protocols, Publications, Related Products, Reviews, Research Tools and Images at:
www.novusbio.com/NBP2-34670

Updated 10/23/2024 v.20.1

Earn rewards for product
reviews and publications.

Submit a publication at www.novusbio.com/publications

Submit a review at www.novusbio.com/reviews/destination/NBP2-34670



NBP2-34670-0.1mg

HSP60 Antibody (LK1) - Azide and BSA Free

Product Information	
Unit Size	0.1 mg
Concentration	1.0 mg/ml
Storage	Store at -20 to -80C. Avoid freeze-thaw cycles.
Clonality	Monoclonal
Clone	LK1
Preservative	No Preservative
Isotype	IgG1 Kappa
Purity	Protein A or G purified
Buffer	10 mM PBS
Target Molecular Weight	60 kDa

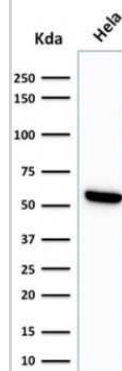
Product Description	
Description	1.0 mg/ml of antibody purified from Bioreactor Concentrate by Protein A/G. Prepared in 10mM PBS WITHOUT BSA. Also available at 200 ug/ml WITH BSA & azide (NBP2-32973). Antibody with azide - store at 2 to 8C.
Host	Mouse
Gene ID	3329
Gene Symbol	HSPD1
Species	Human, Mouse, Rat, Porcine, Bovine, Canine, Chicken, Drosophila, Hamster, Monkey, Rabbit, Sheep, Xenopus
Reactivity Notes	Does not react with bacteria, helminths or spinach.
Marker	Mitochondrial Marker
Specificity/Sensitivity	Recognizes a 60kDa protein, identified as the heat shock protein 60 (HSP60). Its epitope is localized between aa 383-447 of human HSP60. A wide variety of environmental and pathophysiological stressful conditions trigger the synthesis of a family of proteins known as heat shock proteins (hsp s), more appropriately called as stress response proteins (srp s). Hsp60 is a potential antigen in a number of autoimmune diseases. In human arthritis and in experimentally induced arthritis in animals, disease development coincides with the development of immune reactivity directed against not only bacterial HSP60, but also against its mammalian homolog.
Immunogen	Recombinant human HSP60 protein (Uniprot: P10809)

Product Application Details	
Applications	Western Blot, Simple Western, Flow Cytometry, Immunocytochemistry/ Immunofluorescence, Immunohistochemistry, Immunohistochemistry-Paraffin, CyTOF-ready
Recommended Dilutions	Western Blot 0.25-0.5ug/ml, Simple Western, Flow Cytometry 0.5-1ug/million cells, Immunohistochemistry, Immunocytochemistry/ Immunofluorescence 0.5-1ug/ml, Immunohistochemistry-Paraffin 0.5-1ug/ml, CyTOF-ready
Application Notes	Immunohistochemistry (Formalin-fixed): 1-2ug/ml for 30 minutes at RT. Staining of formalin-fixed tissues requires heating tissue sections in 10mM Tris with 1mM EDTA, pH 9.0, for 45 min at 95C followed by cooling at RT for 20 minutes. Optimal dilution for a specific application should be determined.

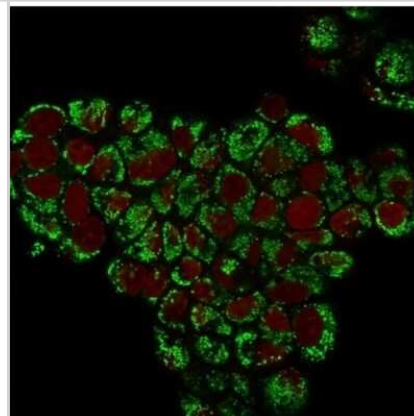


Images

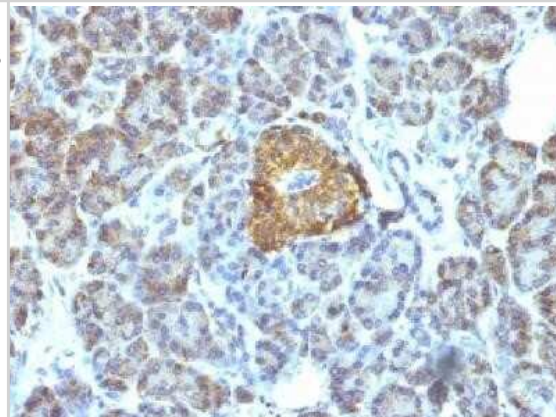
Western Blot: HSP60 Antibody (LK1) - Azide and BSA Free [NBP2-34670] - Western Blot Analysis of HeLa cell lysate using HSP60 Antibody (LK1)



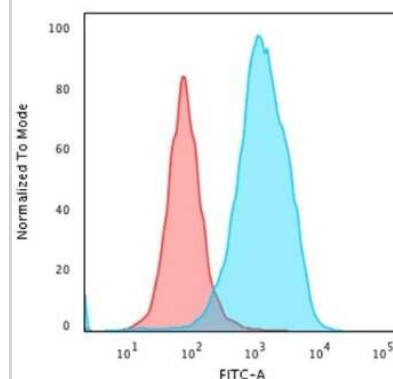
Immunocytochemistry/Immunofluorescence: HSP60 Antibody (LK1) - Azide and BSA Free [NBP2-34670] - Immunofluorescent staining of PFA-fixed MCF-7 cells. followed by goat anti-Mouse IgG-CF488 (green). Nuclei are labeled with Red Dot (red).



Immunohistochemistry-Paraffin: HSP60 Antibody (LK1) - Azide and BSA Free [NBP2-34670] - Formalin-fixed paraffin-embedded human pancreas stained with HSP60 Monoclonal Antibody (LK1).



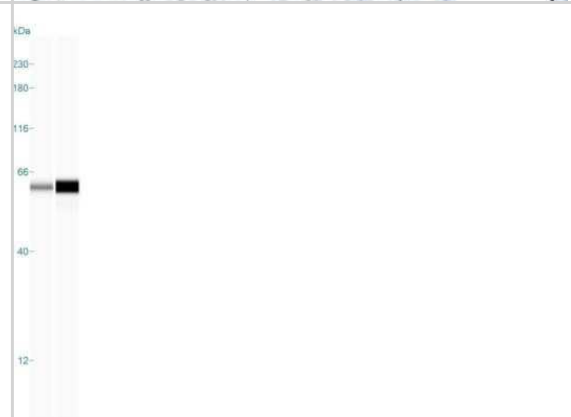
Flow Cytometry: HSP60 Antibody (LK1) - Azide and BSA Free [NBP2-34670] - Flow Cytometric Analysis of paraformaldehyde-fixed HeLa cells using HSP60 antibody (LK1) followed by goat anti-Mouse IgG-CF488 (Blue); Isotype Control (Red).



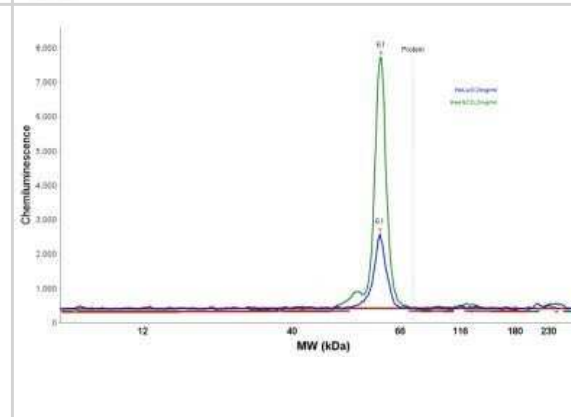
Immunohistochemistry-Paraffin: HSP60 Antibody (LK1) - Azide and BSA Free [NBP2-34670] - Formalin-fixed, paraffin-embedded human breast carcinoma stained with HSP60 MAb (LK1)



Simple Western: HSP60 Antibody (LK1) - Azide and BSA Free [NBP2-34670] - Simple Western lane view shows a specific band for HSP60 in 0.2 mg/ml of HeLa (left) and HepG2 (right) lysate(s). This experiment was performed under reducing conditions using the 12-230 kDa separation system.



Simple Western: HSP60 Antibody (LK1) - Azide and BSA Free [NBP2-34670] - Electropherogram image of the corresponding Simple Western lane. HSP60 antibody was used at 10 ug/ml dilution of HeLa and HepG2 lysates(s) respectively.





Novus Biologicals USA

10730 E. Briarwood Avenue
Centennial, CO 80112
USA
Phone: 303.730.1950
Toll Free: 1.888.506.6887
Fax: 303.730.1966
nb-customerservice@bio-techne.com

Bio-Techne Canada

21 Canmotor Ave
Toronto, ON M8Z 4E6
Canada
Phone: 905.827.6400
Toll Free: 855.668.8722
Fax: 905.827.6402
canada.inquires@bio-techne.com

Bio-Techne Ltd

19 Barton Lane
Abingdon Science Park
Abingdon, OX14 3NB, United Kingdom
Phone: (44) (0) 1235 529449
Free Phone: 0800 37 34 15
Fax: (44) (0) 1235 533420
info.EMEA@bio-techne.com

General Contact Information

www.novusbio.com
Technical Support: nb-technical@bio-techne.com
Orders: nb-customerservice@bio-techne.com
General: novus@novusbio.com

Products Related to NBP2-34670-0.1mg

HAF007	Goat anti-Mouse IgG Secondary Antibody [HRP]
NB720-B	Rabbit anti-Mouse IgG (H+L) Secondary Antibody [Biotin]
NBP1-43319-0.5mg	Mouse IgG1 Kappa Isotype Control (P3.6.2.8.1)
NBP1-77396PEP	HSP60 Antibody Blocking Peptide

Limitations

This product is for research use only and is not approved for use in humans or in clinical diagnosis. Primary Antibodies are guaranteed for 1 year from date of receipt.

For more information on our 100% guarantee, please visit www.novusbio.com/guarantee

Earn gift cards/discounts by submitting a review: www.novusbio.com/reviews/submit/NBP2-34670

Earn gift cards/discounts by submitting a publication using this product:
www.novusbio.com/publications

