

# Product Datasheet

## Cytokeratin 8/18 Antibody (K8.8 + DC10) [Alexa Fluor® 488]

**NBP2-34655AF488**

Unit Size: 0.1 ml

Store at 4C in the dark.

[www.novusbio.com](http://www.novusbio.com)



[technical@novusbio.com](mailto:technical@novusbio.com)

### Publications: 1

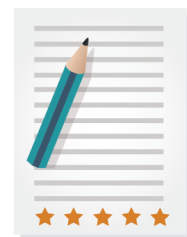
Protocols, Publications, Related Products, Reviews, Research Tools and Images at:  
[www.novusbio.com/NBP2-34655AF488](http://www.novusbio.com/NBP2-34655AF488)

Updated 10/23/2024 v.20.1

Earn rewards for product  
reviews and publications.

Submit a publication at [www.novusbio.com/publications](http://www.novusbio.com/publications)

Submit a review at [www.novusbio.com/reviews/destination/NBP2-34655AF488](http://www.novusbio.com/reviews/destination/NBP2-34655AF488)



**NBP2-34655AF488**

Cytokeratin 8/18 Antibody (K8.8 + DC10) [Alexa Fluor® 488]

<b>Product Information</b>	
<b>Unit Size</b>	0.1 ml
<b>Concentration</b>	Please see the vial label for concentration. If unlisted please contact technical services.
<b>Storage</b>	Store at 4C in the dark.
<b>Clonality</b>	Monoclonal
<b>Clone</b>	K8.8 + DC10
<b>Preservative</b>	0.05% Sodium Azide
<b>Isotype</b>	IgG1 Kappa/IgG1 Kappa
<b>Conjugate</b>	Alexa Fluor 488
<b>Purity</b>	Protein A or G purified
<b>Buffer</b>	50mM Sodium Borate
<b>Product Description</b>	
<b>Host</b>	Mouse
<b>Gene ID</b>	3856
<b>Gene Symbol</b>	KRT8
<b>Species</b>	Human
<b>Specificity/Sensitivity</b>	Cytokeratin 8 (CK8) belongs to the type II (or B or basic) subfamily of high molecular weight cytokeratins and exists in combination with cytokeratin 18 (CK18). This monoclonal antibody cocktail recognizes all simple epithelia including glandular epithelium, for example thyroid, female breast, gastrointestinal tract, respiratory tract, and urogenital tract including transitional epithelium. All adenocarcinomas and most squamous carcinomas are positive but keratinizing squamous carcinomas are usually negative. This antibody is useful in demonstrating the presence of Paget cells; there is very little keratin 18 in the normal epidermis so only Paget cells are stained. Immunohistochemical staining with this monoclonal antibody is indistinguishable from that obtained with monoclonal antibody 5D3.
<b>Immunogen</b>	Keratin preparation from a human carcinoma (K8.8); PMC-42 human breast carcinoma cells (DC10)
<b>Notes</b>	Alexa Fluor (R) products are provided under an intellectual property license from Life Technologies Corporation. The purchase of this product conveys to the buyer the non-transferable right to use the purchased product and components of the product only in research conducted by the buyer (whether the buyer is an academic or for-profit entity). The sale of this product is expressly conditioned on the buyer not using the product or its components, or any materials made using the product or its components, in any activity to generate revenue, which may include, but is not limited to use of the product or its components: (i) in manufacturing; (ii) to provide a service, information, or data in return for payment; (iii) for therapeutic, diagnostic or prophylactic purposes; or (iv) for resale, regardless of whether they are resold for use in research. For information on purchasing a license to this product for purposes other than as described above, contact Life Technologies Corporation, 5791 Van Allen Way, Carlsbad, CA 92008 USA or <a href="mailto:outlicensing@lifetech.com">outlicensing@lifetech.com</a> . This conjugate is made on demand. Actual recovery may vary from the stated volume of this product. The volume will be greater than or equal to the unit size stated on the datasheet.

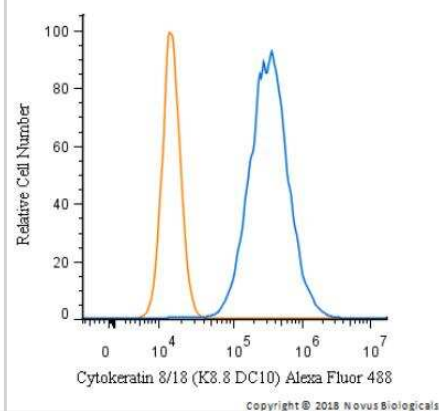


## Product Application Details

<b>Applications</b>	Western Blot, Flow Cytometry, Flow (Intracellular), Immunocytochemistry/Immunofluorescence, Immunohistochemistry, Immunohistochemistry-Paraffin, CyTOF-ready
<b>Recommended Dilutions</b>	Western Blot, Flow Cytometry, Immunohistochemistry, Immunocytochemistry/Immunofluorescence, Immunohistochemistry-Paraffin, Flow (Intracellular), CyTOF-ready

## Images

Flow Cytometry: Cytokeratin 8/18 Antibody (K8.8 + DC10) [Alexa Fluor® 488] [NBP2-34655AF488] - An intracellular stain was performed on HeLa cells with Cytokeratin 8/18 Antibody (K8.8 + DC10) NBP2-34655AF488 (blue) and a matched isotype control (orange). Cells were fixed with 4% PFA and then permeabilized with 0.1% saponin. Cells were incubated in an antibody dilution of 10 ug/mL for 30 minutes at room temperature. Both antibodies were conjugated to Alexa Fluor 488.



## Publications

Khan M, Yoo SJ, Clijsters M et al. Visualizing in deceased COVID-19 patients how SARS-CoV-2 attacks the respiratory and olfactory mucosae but spares the olfactory bulb Cell 2021-11-01 [PMID: 34798069] (IF/IHC)

### Details:

Citation using the Alexa Fluor 488 format of this antibody.



### **Novus Biologicals USA**

10730 E. Briarwood Avenue  
Centennial, CO 80112  
USA  
Phone: 303.730.1950  
Toll Free: 1.888.506.6887  
Fax: 303.730.1966  
nb-customerservice@bio-techne.com

### **Bio-Techne Canada**

21 Canmotor Ave  
Toronto, ON M8Z 4E6  
Canada  
Phone: 905.827.6400  
Toll Free: 855.668.8722  
Fax: 905.827.6402  
canada.inquires@bio-techne.com

### **Bio-Techne Ltd**

19 Barton Lane  
Abingdon Science Park  
Abingdon, OX14 3NB, United Kingdom  
Phone: (44) (0) 1235 529449  
Free Phone: 0800 37 34 15  
Fax: (44) (0) 1235 533420  
info.EMEA@bio-techne.com

### **General Contact Information**

www.novusbio.com  
Technical Support: nb-technical@bio-techne.com  
Orders: nb-customerservice@bio-techne.com  
General: novus@novusbio.com

### **Products Related to NBP2-34655AF488**

---

8184-CK-050	Choline Kinase beta [Unconjugated]
MAB1368	alpha-Fetoprotein/AFP Antibody (189502) [Unconjugated]
NB300-223	Vimentin Antibody
NBP2-29429	Cytokeratin, pan Antibody (AE-1/AE-3)

---

### **Limitations**

This product is for research use only and is not approved for use in humans or in clinical diagnosis. Primary Antibodies are guaranteed for 1 year from date of receipt.

For more information on our 100% guarantee, please visit [www.novusbio.com/guarantee](http://www.novusbio.com/guarantee)

Earn gift cards/discounts by submitting a review: [www.novusbio.com/reviews/submit/NBP2-34655AF488](http://www.novusbio.com/reviews/submit/NBP2-34655AF488)

Earn gift cards/discounts by submitting a publication using this product:  
[www.novusbio.com/publications](http://www.novusbio.com/publications)

