

# Product Datasheet

## IgM Antibody (SPM557) [FITC] NBP2-34422F

Unit Size: 0.1 ml

Store at 4C in the dark.

[www.novusbio.com](http://www.novusbio.com)



[technical@novusbio.com](mailto:technical@novusbio.com)

Protocols, Publications, Related Products, Reviews, Research Tools and Images at:  
[www.novusbio.com/NBP2-34422F](http://www.novusbio.com/NBP2-34422F)

Updated 10/26/2023 v.20.1

Earn rewards for product  
reviews and publications.

Submit a publication at [www.novusbio.com/publications](http://www.novusbio.com/publications)

Submit a review at [www.novusbio.com/reviews/destination/NBP2-34422F](http://www.novusbio.com/reviews/destination/NBP2-34422F)



**NBP2-34422F**

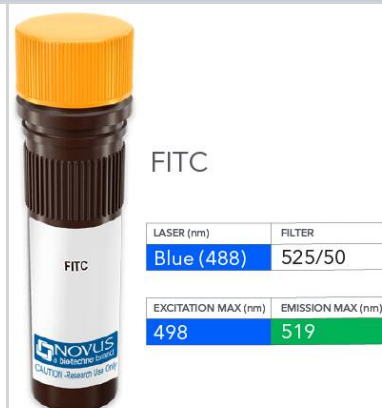
IgM Antibody (SPM557) [FITC]

Product Information	
Unit Size	0.1 ml
Concentration	Please see the vial label for concentration. If unlisted please contact technical services.
Storage	Store at 4C in the dark.
Clonality	Monoclonal
Clone	SPM557
Preservative	0.05% Sodium Azide
Isotype	IgG1 Kappa
Conjugate	FITC
Purity	Protein A or G purified
Buffer	PBS
Product Description	
Host	Mouse
Gene ID	3507
Gene Symbol	IGHM
Species	Human
Marker	B-Cell Marker
Specificity/Sensitivity	Recognizes a protein of 75kDa, identified as mu heavy chain of human immunoglobulins. It does not cross-react with alpha (IgA), gamma (IgG), epsilon (IgE), or delta (IgD), heavy chains, T-cells, monocytes, granulocytes, or erythrocytes. This monoclonal antibody is useful in the identification of leukemias, plasmacytomas, and certain non-Hodgkins lymphomas. The most common feature of these malignancies is the restricted expression of a single heavy chain class. Demonstration of clonality in lymphoid infiltrates indicates that the infiltrate is clonal and therefore malignant.
Immunogen	Recombinant heavy chain of human IgM
Product Application Details	
Applications	Flow Cytometry, Immunocytochemistry/ Immunofluorescence, Immunohistochemistry, Immunohistochemistry-Paraffin, CyTOF-ready
Recommended Dilutions	Flow Cytometry, Immunohistochemistry, Immunocytochemistry/ Immunofluorescence, Immunohistochemistry-Paraffin, CyTOF-ready
Application Notes	Optimal dilution of this antibody should be experimentally determined.



## Images

IgM Antibody (SPM557) [FITC] [NBP2-34422F] - Vial of FITC conjugated antibody. FITC is optimally excited at 498 nm by the Blue laser (488 nm) and has an emission maximum of 519 nm.





### **Novus Biologicals USA**

10730 E. Briarwood Avenue  
Centennial, CO 80112  
USA  
Phone: 303.730.1950  
Toll Free: 1.888.506.6887  
Fax: 303.730.1966  
nb-customerservice@bio-techne.com

### **Bio-Techne Canada**

21 Canmotor Ave  
Toronto, ON M8Z 4E6  
Canada  
Phone: 905.827.6400  
Toll Free: 855.668.8722  
Fax: 905.827.6402  
canada.inquires@bio-techne.com

### **Bio-Techne Ltd**

19 Barton Lane  
Abingdon Science Park  
Abingdon, OX14 3NB, United Kingdom  
Phone: (44) (0) 1235 529449  
Free Phone: 0800 37 34 15  
Fax: (44) (0) 1235 533420  
info.EMEA@bio-techne.com

### **General Contact Information**

www.novusbio.com  
Technical Support: nb-technical@bio-techne.com  
Orders: nb-customerservice@bio-techne.com  
General: novus@novusbio.com

### **Products Related to NBP2-34422F**

---

NBP1-43319F	Mouse IgG1 Kappa Isotype Control (P3.6.2.8.1) [FITC]
H00003507-P01-10ug	Recombinant Human IgM GST (N-Term) Protein
7268-CT-100	CTLA-4 [Unconjugated]
NBP2-62224	Mouse IgM Isotype Control (PFR-03)

---

### **Limitations**

This product is for research use only and is not approved for use in humans or in clinical diagnosis. Primary Antibodies are guaranteed for 1 year from date of receipt.

For more information on our 100% guarantee, please visit [www.novusbio.com/guarantee](http://www.novusbio.com/guarantee)

Earn gift cards/discounts by submitting a review: [www.novusbio.com/reviews/submit/NBP2-34422F](http://www.novusbio.com/reviews/submit/NBP2-34422F)

Earn gift cards/discounts by submitting a publication using this product:  
[www.novusbio.com/publications](http://www.novusbio.com/publications)

