

# Product Datasheet

## Plasma Cell Marker Antibody (SPM310) - Azide and BSA Free NBP2-34407-0.1mg

Unit Size: 0.1 mg

Store at -20 to -80C. Avoid freeze-thaw cycles.

[www.novusbio.com](http://www.novusbio.com)



[technical@novusbio.com](mailto:technical@novusbio.com)

Protocols, Publications, Related Products, Reviews, Research Tools and Images at:  
[www.novusbio.com/NBP2-34407](http://www.novusbio.com/NBP2-34407)

Updated 10/23/2024 v.20.1

Earn rewards for product reviews and publications.

Submit a publication at [www.novusbio.com/publications](http://www.novusbio.com/publications)

Submit a review at [www.novusbio.com/reviews/destination/NBP2-34407](http://www.novusbio.com/reviews/destination/NBP2-34407)



**NBP2-34407-0.1mg**

Plasma Cell Marker Antibody (SPM310) - Azide and BSA Free

Product Information	
Unit Size	0.1 mg
Concentration	1.0 mg/ml
Storage	Store at -20 to -80C. Avoid freeze-thaw cycles.
Clonality	Monoclonal
Clone	SPM310
Preservative	No Preservative
Isotype	IgG2a Kappa
Purity	Protein A or G purified
Buffer	10 mM PBS

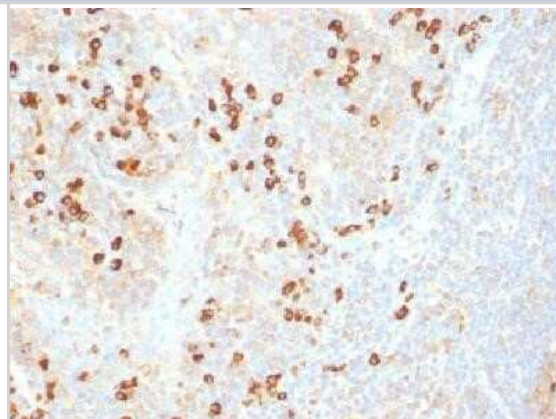
Product Description	
Description	<p>1.0 mg/ml of antibody purified from Bioreactor Concentrate by Protein A/G. Prepared in 10mM PBS WITHOUT BSA &amp; azide. Also available at 200 ug/ml WITH BSA &amp; azide (NBP2-34359).</p> <p>Antibody with azide - store at 2 to 8C. Antibody without azide - store at -20 to -80C.</p>
Host	Mouse
Species	Human, Rat (Negative)
Reactivity Notes	Does not react with Rat.
Marker	Plasma Cell Marker
Specificity/Sensitivity	<p>It recognizes an intra-cytoplasmic antigen, which shows a very high degree of specificity for plasma cells. This antigen is present in normal as well as neoplastic plasma cells. Plasma cells, which are large lymphocytes derived from an antigen-specific B cell, secrete antibodies and are responsible for humoral immunity. Plasma cells differentiate from B cells upon stimulation by CD4+ lymphocytes. The B cell acts as an antigen-presenting cell (APC), consuming an offending pathogen, which is taken up by the B cell by phagocytosis and broken down within proteosomes. Plasma cells contain basophilic cytoplasm; their nucleus contains heterochromatin organized in a characteristic cartwheel arrangement. This monoclonal antibody superbly recognizes normal and neoplastic plasma cells in routine formalin-fixed, paraffin-embedded tissue sections. It is of potential value in identifying myeloma or plasmacytoma in bone marrow or other tissues. It also helps differentiate lympho-plasmacytoid lymphoma from lymphocytic and follicular lymphoma. Note that this monoclonal antibody is not suitable for staining frozen tissues.</p>
Immunogen	Pancreatic cancer-related mucin

Product Application Details	
Applications	Immunohistochemistry, Immunohistochemistry-Paraffin
Recommended Dilutions	Immunohistochemistry, Immunohistochemistry-Paraffin 0.5-1ug/ml
Application Notes	<p>Immunohistochemistry (Formalin-fixed): 0.1-0.2ug/ml for 30 minutes at RT. Staining of formalin-fixed tissues requires heating tissue sections in 10mM Tris with 1mM EDTA, pH 9.0, for 45 min at 95C followed by cooling at RT for 20 minutes.</p> <p>Optimal dilution for a specific application should be determined.</p> <p>Note that this antibody is not suitable for staining frozen tissues.</p>

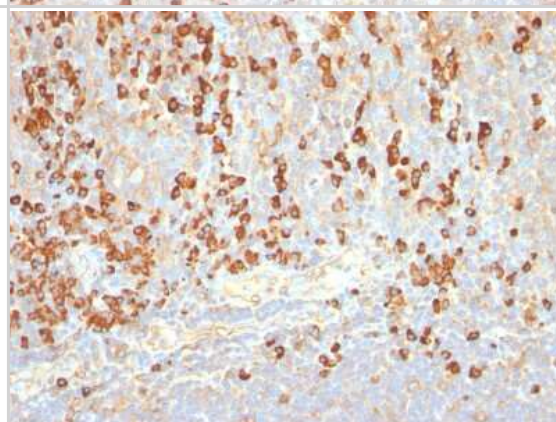


## Images

Immunohistochemistry-Paraffin: Plasma Cell Marker Antibody (SPM310)  
- Azide and BSA Free [NBP2-34407] - Formalin-fixed paraffin-embedded human tonsil stained with plasma cell marker Monoclonal antibody (SPM310)



Immunohistochemistry-Paraffin: Plasma Cell Marker Antibody (SPM310)  
- Azide and BSA Free [NBP2-34407] - Formalin-paraffin human tonsil stained with Plasma Cell Marker MAb (SPM310).



Immunohistochemistry-Paraffin: Plasma Cell Marker Antibody (SPM310)  
- Azide and BSA Free [NBP2-34407] - Human tonsil tissue. Heat induced antigen retrieval in citrate buffer pH 6 at 95C for 20 minutes. Image from verified customer review.





### **Novus Biologicals USA**

10730 E. Briarwood Avenue  
Centennial, CO 80112  
USA  
Phone: 303.730.1950  
Toll Free: 1.888.506.6887  
Fax: 303.730.1966  
nb-customerservice@bio-techne.com

### **Bio-Techne Canada**

21 Canmotor Ave  
Toronto, ON M8Z 4E6  
Canada  
Phone: 905.827.6400  
Toll Free: 855.668.8722  
Fax: 905.827.6402  
canada.inquires@bio-techne.com

### **Bio-Techne Ltd**

19 Barton Lane  
Abingdon Science Park  
Abingdon, OX14 3NB, United Kingdom  
Phone: (44) (0) 1235 529449  
Free Phone: 0800 37 34 15  
Fax: (44) (0) 1235 533420  
info.EMEA@bio-techne.com

### **General Contact Information**

www.novusbio.com  
Technical Support: nb-technical@bio-techne.com  
Orders: nb-customerservice@bio-techne.com  
General: novus@novusbio.com

### **Products Related to NBP2-34407-0.1mg**

HAF007	Goat anti-Mouse IgG Secondary Antibody [HRP]
NB720-B	Rabbit anti-Mouse IgG (H+L) Secondary Antibody [Biotin]
NBP1-96981-0.5mg	Mouse IgG2a Kappa Isotype Control (M2AK)

### **Limitations**

This product is for research use only and is not approved for use in humans or in clinical diagnosis. Primary Antibodies are guaranteed for 1 year from date of receipt.

For more information on our 100% guarantee, please visit [www.novusbio.com/guarantee](http://www.novusbio.com/guarantee)

Earn gift cards/discounts by submitting a review: [www.novusbio.com/reviews/submit/NBP2-34407](http://www.novusbio.com/reviews/submit/NBP2-34407)

Earn gift cards/discounts by submitting a publication using this product:  
[www.novusbio.com/publications](http://www.novusbio.com/publications)

