

# Product Datasheet

## Kappa Light Chain Antibody (SPM508) NBP2-34366-0.1mg

Unit Size: 0.1 mg

Store at 4C.

[www.novusbio.com](http://www.novusbio.com)



[technical@novusbio.com](mailto:technical@novusbio.com)

Protocols, Publications, Related Products, Reviews, Research Tools and Images at:  
[www.novusbio.com/NBP2-34366](http://www.novusbio.com/NBP2-34366)

Updated 10/23/2024 v.20.1

Earn rewards for product  
reviews and publications.

Submit a publication at [www.novusbio.com/publications](http://www.novusbio.com/publications)

Submit a review at [www.novusbio.com/reviews/destination/NBP2-34366](http://www.novusbio.com/reviews/destination/NBP2-34366)



**NBP2-34366-0.1mg**

Kappa Light Chain Antibody (SPM508)

| Product Information     |                          |
|-------------------------|--------------------------|
| Unit Size               | 0.1 mg                   |
| Concentration           | 0.2 mg/ml                |
| Storage                 | Store at 4C.             |
| Clonality               | Monoclonal               |
| Clone                   | SPM508                   |
| Preservative            | 0.05% Sodium Azide       |
| Isotype                 | IgG1 Kappa               |
| Purity                  | Protein A or G purified  |
| Buffer                  | 10 mM PBS with 0.05% BSA |
| Target Molecular Weight | 22.5 kDa                 |

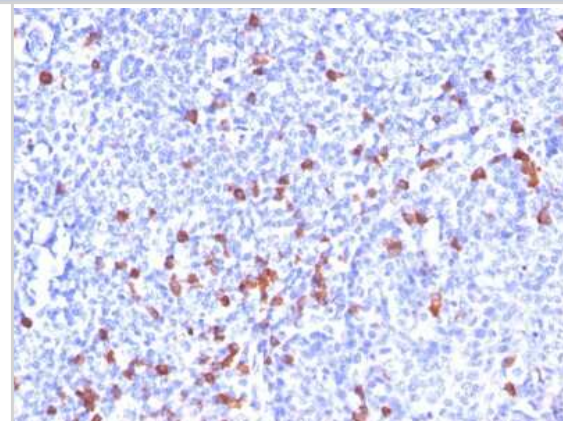
| Product Description     |   |
|-------------------------|---|
| Description             | 200ug/ml of antibody purified from Bioreactor Concentrate by Protein A or G. Prepared in 10 mM PBS with 0.05% BSA & 0.05% azide. Also available WITHOUT BSA & azide at 1.0 mg/ml. (NBP2-34396)<br><br>Antibody with azide - store at 2 to 8C. Antibody without azide - store at -20 to -80C.  |
| Host                    | Mouse   |
| Gene ID                 | 3514  |
| Gene Symbol             | IGKC  |
| Species                 | Human, Rat (Negative)   |
| Reactivity Notes        | Does not react with Rat.  |
| Marker                  | B-Cell Marker   |
| Specificity/Sensitivity | This monoclonal antibody is specific to kappa light chain of immunoglobulin and shows no cross-reaction with lambda light chain or any of the five heavy chains. In mammals, the two light chains in an antibody are always identical, with only one type of light chain, kappa or lambda. The ratio of kappa to lambda is 70:30. However, with the occurrence of multiple myeloma or other B-cell malignancies this ratio is disturbed. Antibody to the kappa light chain is reportedly useful in the identification of leukemias, plasmacytomas, and certain non-Hodgkins lymphomas. Demonstration of clonality in lymphoid infiltrates indicates that the infiltrate is malignant. |
| Immunogen               | Human B-Lymphoma Cells  |

| Product Application Details |   |
|-----------------------------|---|
| Applications                | Flow Cytometry, Immunohistochemistry, Immunohistochemistry-Paraffin   |
| Recommended Dilutions       | Flow Cytometry 0.5-2.0 ug/million cells, Immunohistochemistry, Immunohistochemistry-Paraffin 1-2 ug/ml  |
| Application Notes           | Immunohistochemistry (Formalin-fixed): 1-2ug/ml for 30 min at RT. Staining of formalin-fixed tissues requires heating tissue sections in 10mM Tris with 1mM EDTA, pH 9.0, for 45 min at 95C followed by cooling at RT for 20 minutes. Optimal dilution for a specific application should be determined. |



## Images

Immunohistochemistry-Paraffin: Kappa Light Chain Antibody (SPM508) [NBP2-34366] - Formalin-paraffin human tonsil stained with Kappa Light Chain MAb (SPM508). Note cell membrane & cytoplasmic staining.





### **Novus Biologicals USA**

10730 E. Briarwood Avenue  
Centennial, CO 80112  
USA  
Phone: 303.730.1950  
Toll Free: 1.888.506.6887  
Fax: 303.730.1966  
nb-customerservice@bio-techne.com

### **Bio-Techne Canada**

21 Canmotor Ave  
Toronto, ON M8Z 4E6  
Canada  
Phone: 905.827.6400  
Toll Free: 855.668.8722  
Fax: 905.827.6402  
canada.inquires@bio-techne.com

### **Bio-Techne Ltd**

19 Barton Lane  
Abingdon Science Park  
Abingdon, OX14 3NB, United Kingdom  
Phone: (44) (0) 1235 529449  
Free Phone: 0800 37 34 15  
Fax: (44) (0) 1235 533420  
info.EMEA@bio-techne.com

### **General Contact Information**

www.novusbio.com  
Technical Support: nb-technical@bio-techne.com  
Orders: nb-customerservice@bio-techne.com  
General: novus@novusbio.com

### **Products Related to NBP2-34366-0.1mg**

---

|                    |  |
|--------------------|--|
| HAF007             | Goat anti-Mouse IgG Secondary Antibody [HRP]             |
| NB720-B            | Rabbit anti-Mouse IgG (H+L) Secondary Antibody [Biotin]  |
| NBP1-43319-0.5mg   | Mouse IgG1 Kappa Isotype Control (P3.6.2.8.1)            |
| H00003514-P01-10ug | Recombinant Human Kappa Light Chain GST (N-Term) Protein |

---

### **Limitations**

This product is for research use only and is not approved for use in humans or in clinical diagnosis. Primary Antibodies are guaranteed for 1 year from date of receipt.

For more information on our 100% guarantee, please visit [www.novusbio.com/guarantee](http://www.novusbio.com/guarantee)

Earn gift cards/discounts by submitting a review: [www.novusbio.com/reviews/submit/NBP2-34366](http://www.novusbio.com/reviews/submit/NBP2-34366)

Earn gift cards/discounts by submitting a publication using this product:  
[www.novusbio.com/publications](http://www.novusbio.com/publications)

