

Product Datasheet

Cytokeratin 6 Antibody (SPM269)

NBP2-34358-0.1mg

Unit Size: 0.1 mg

Store at 4C.

www.novusbio.com



technical@novusbio.com

Publications: 1

Protocols, Publications, Related Products, Reviews, Research Tools and Images at:
www.novusbio.com/NBP2-34358

Updated 7/16/2024 v.20.1

Earn rewards for product
reviews and publications.

Submit a publication at www.novusbio.com/publications

Submit a review at www.novusbio.com/reviews/destination/NBP2-34358



NBP2-34358-0.1mg

Cytokeratin 6 Antibody (SPM269)

Product Information	
Unit Size	0.1 mg
Concentration	0.2 mg/ml
Storage	Store at 4C.
Clonality	Monoclonal
Clone	SPM269
Preservative	0.05% Sodium Azide
Isotype	IgG2a Kappa
Purity	Protein A or G purified
Buffer	10 mM PBS with 0.05% BSA
Target Molecular Weight	56 kDa

Product Description	
Description	<p>200ug/ml of antibody purified from Bioreactor Concentrate by Protein A or G. Prepared in 10 mM PBS with 0.05% BSA & 0.05% azide. Also available WITHOUT BSA & azide at 1.0 mg/ml. (NBP2-34406)</p> <p>Antibody with azide - store at 2 to 8C. Antibody without azide - store at -20 to -80C.</p>
Host	Mouse
Gene ID	3853
Gene Symbol	KRT6A
Species	Human, Mouse
Marker	Basal Cell Marker
Specificity/Sensitivity	<p>This monoclonal antibody recognizes a protein of 56kDa, identified as cytokeratin 6 (CK6). In humans, multiple isoforms of Cytokeratin 6 (6A-6F), encoded by several highly homologous genes, have distinct tissue expression patterns, and Cytokeratin 6A is the dominant form in epithelial tissue. The gene encoding human Cytokeratin 6A maps to chromosome 12q13, and mutations in this gene are linked to several inheritable hair and skin pathologies. Keratins 6 and 16 are expressed in keratinocytes, which are undergoing rapid turnover in the suprabasal region (also known as hyper-proliferation-related keratins). Keratin 6 is found in hair follicles, suprabasal cells of a variety of internal stratified epithelia, in epidermis, in both normal and hyper-proliferative situations. Epidermal injury results in activation of keratinocytes, which express CK6 and CK16. CK6 is strongly expressed in about 75% of head and neck squamous cell carcinomas. Expression of CK6 is particularly associated with differentiation.</p>
Immunogen	A synthetic peptide of 11 amino acids (GSSTIKYTTTS) from C-terminus of human Cytokeratin 6

Product Application Details	
Applications	Flow Cytometry, Immunocytochemistry/ Immunofluorescence, Immunohistochemistry, Immunohistochemistry-Paraffin
Recommended Dilutions	Flow Cytometry 1-2 ug/million cells, Immunohistochemistry, Immunocytochemistry/ Immunofluorescence 1-2 ug/ml, Immunohistochemistry-Paraffin 1-2 ug/ml

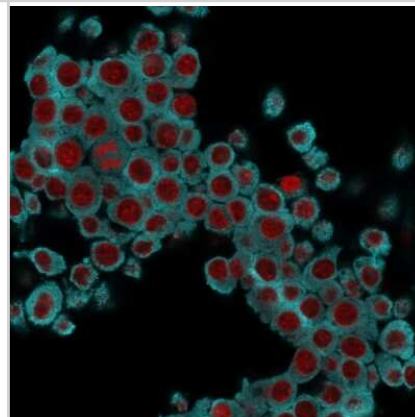


Application Notes

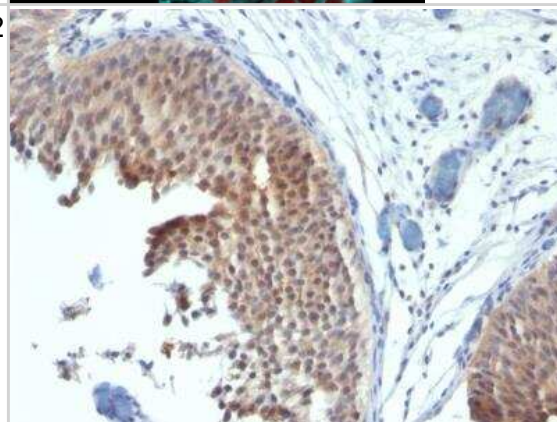
Immunohistochemistry (Formalin-fixed): 1-2ug/ml for 30 minutes at RT. Staining of formalin/paraffin tissues is enhanced by digestion of tissue sections with pepsin at 1mg/ml Tris-HCl, pH 2.0 for 10-15 min at RT. Optimal dilution for a specific application should be determined.

Images

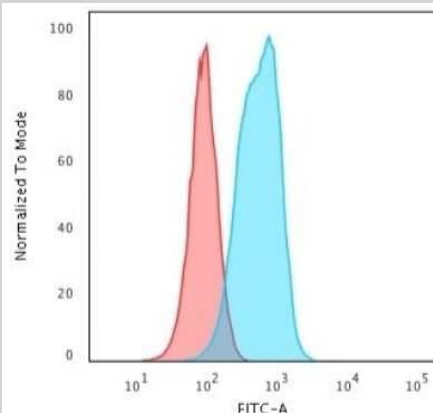
Immunocytochemistry/Immunofluorescence: Cytokeratin 6 Antibody (SPM269) [NBP2-34358] - Immunofluorescence Analysis of RAW cells labeling KRT6 with Cytokeratin 6 Antibody (SPM269) followed by Goat anti-Mouse IgG-CF488 (Cyan). The nuclear counterstain is Red Dot (Red).



Immunohistochemistry-Paraffin: Cytokeratin 6 Antibody (SPM269) [NBP2-34358] - Formalin-fixed, paraffin-embedded human Bladder Carcinoma stained with Cytokeratin 6 Monoclonal Antibody (SPM269).



Flow Cytometry: Cytokeratin 6 Antibody (SPM269) [NBP2-34358] - Flow Cytometric Analysis of RAW cells using Cytokeratin 6 Antibody (SPM269) followed by Goat anti-Mouse IgG-CF488 (Blue); Isotype Control (Red).

**Publications**

Aaron G Baugh, Edgar Gonzalez, Valerie H Narumi, Jesse Kreger, Yingtong Liu, Christine Rafie, Sofi Castanon, Julie Jang, Luciane T Kagohara, Dimitra P Anastasiadou, James Leatherman, Todd Armstrong, Isaac Chan, George S Karagiannis, Elizabeth M Jaffee, Adam MacLean, Evanthis T Roussos Torres A new Neu-a syngeneic model of spontaneously metastatic HER2-positive breast cancer. Clinical & experimental metastasis 2024-05-08 [PMID: 38717519]



Novus Biologicals USA

10730 E. Briarwood Avenue
Centennial, CO 80112
USA
Phone: 303.730.1950
Toll Free: 1.888.506.6887
Fax: 303.730.1966
nb-customerservice@bio-techne.com

Bio-Techne Canada

21 Canmotor Ave
Toronto, ON M8Z 4E6
Canada
Phone: 905.827.6400
Toll Free: 855.668.8722
Fax: 905.827.6402
canada.inquires@bio-techne.com

Bio-Techne Ltd

19 Barton Lane
Abingdon Science Park
Abingdon, OX14 3NB, United Kingdom
Phone: (44) (0) 1235 529449
Free Phone: 0800 37 34 15
Fax: (44) (0) 1235 533420
info.EMEA@bio-techne.com

General Contact Information

www.novusbio.com
Technical Support: nb-technical@bio-techne.com
Orders: nb-customerservice@bio-techne.com
General: novus@novusbio.com

Products Related to NBP2-34358-0.1mg

HAF007	Goat anti-Mouse IgG Secondary Antibody [HRP]
NB720-B	Rabbit anti-Mouse IgG (H+L) Secondary Antibody [Biotin]
NBP1-96981-0.5mg	Mouse IgG2a Kappa Isotype Control (M2AK)
NB100-355	RPE65 Antibody (401.8B11.3D9) - BSA Free

Limitations

This product is for research use only and is not approved for use in humans or in clinical diagnosis. Primary Antibodies are guaranteed for 1 year from date of receipt.

For more information on our 100% guarantee, please visit www.novusbio.com/guarantee

Earn gift cards/discounts by submitting a review: www.novusbio.com/reviews/submit/NBP2-34358

Earn gift cards/discounts by submitting a publication using this product:
www.novusbio.com/publications

