

Product Datasheet

Cytokeratin 14 Antibody (SPM263)

NBP2-34355-0.1mg

Unit Size: 0.1 mg

Store at 4C.

www.novusbio.com



technical@novusbio.com

Publications: 4

Protocols, Publications, Related Products, Reviews, Research Tools and Images at:
www.novusbio.com/NBP2-34355

Updated 10/23/2024 v.20.1

Earn rewards for product
reviews and publications.

Submit a publication at www.novusbio.com/publications

Submit a review at www.novusbio.com/reviews/destination/NBP2-34355



NBP2-34355-0.1mg**Cytokeratin 14 Antibody (SPM263)**

Product Information	
Unit Size	0.1 mg
Concentration	0.2 mg/ml
Storage	Store at 4C.
Clonality	Monoclonal
Clone	SPM263
Preservative	0.05% Sodium Azide
Isotype	IgG3 Kappa
Purity	Protein A or G purified
Buffer	10 mM PBS with 0.05% BSA
Target Molecular Weight	50 kDa

Product Description	
Description	200ug/ml of antibody purified from Bioreactor Concentrate by Protein A or G. Prepared in 10 mM PBS with 0.05% BSA & 0.05% azide. Also available WITHOUT BSA & azide at 1.0 mg/ml. (NBP2-34403) Antibody with azide - store at 2 to 8C. Antibody without azide - store at -20 to -80C.
Host	Mouse
Gene ID	3861
Gene Symbol	KRT14
Species	Human, Mouse, Rat
Marker	Squamous Cell Marker
Specificity/Sensitivity	Cytokeratin 14 (CK14) belongs to the type I (or A or acidic) subfamily of low molecular weight keratins and exists in combination with keratin 5 (type II or B or basic). CK14 is found in basal cells of squamous epithelia, some glandular epithelia, myoepithelium, and mesothelial cells. Anti-CK14 is useful in differentiating squamous cell carcinomas from poorly differentiated epithelial tumors. Anti-CK14 is one of the specific basal markers for distinguishing between basal and non-basal subtypes of breast carcinomas. Anti-CK14 is also a good marker for differentiation of intraductal from invasive salivary duct carcinoma by the positive staining of basal cells surrounding the in-situ neoplasm as well as for differentiation of benign prostate from prostate carcinoma. Furthermore, this antibody has been useful in separating oncocytic tumors of the kidney from its renal mimics, and in identifying metaplastic carcinomas of the breast.
Immunogen	A synthetic peptide of 15 amino acid from the C-terminus of human Cytokeratin 14. (Uniprot: P02533)

Product Application Details	
Applications	Flow Cytometry, Flow (Intracellular), Immunocytochemistry/ Immunofluorescence, Immunohistochemistry, Immunohistochemistry-Paraffin
Recommended Dilutions	Flow Cytometry 0.5-1ug/million cells, Immunohistochemistry, Immunocytochemistry/ Immunofluorescence 1-2 ug/ml, Immunohistochemistry-Paraffin 1-2 ug/ml, Flow (Intracellular)

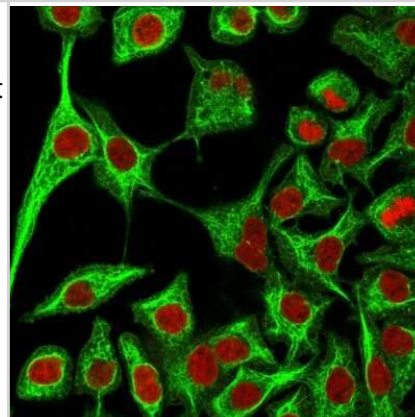


Application Notes

Immunohistochemistry (Formalin-fixed): 1-2ug/ml for 30 minutes at RT. Staining of formalin-fixed tissues requires heating tissue sections in 10mM Tris with 1mM EDTA, pH 9.0, for 45 min at 95C followed by cooling at RT for 20 minutes. Optimal dilution for a specific application should be determined.

Images

Immunocytochemistry/Immunofluorescence: Cytokeratin 14 Antibody (SPM263) [NBP2-34355] - Immunofluorescence Analysis of A549 cells labeling KRT14 with Cytokeratin 14 Antibody (SPM263) followed by Goat anti-Mouse IgG-CF488 (Green). The nuclear counterstain is Red Dot (Red).



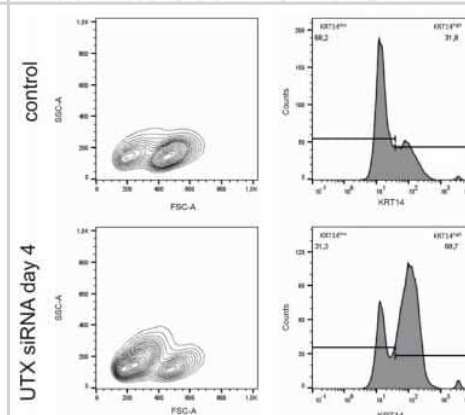
Immunohistochemistry-Paraffin: Cytokeratin 14 Antibody (SPM263) [NBP2-34355] - Formalin-paraffin prostate (20X) stained with Cytokeratin 14 MAb (SPM263).



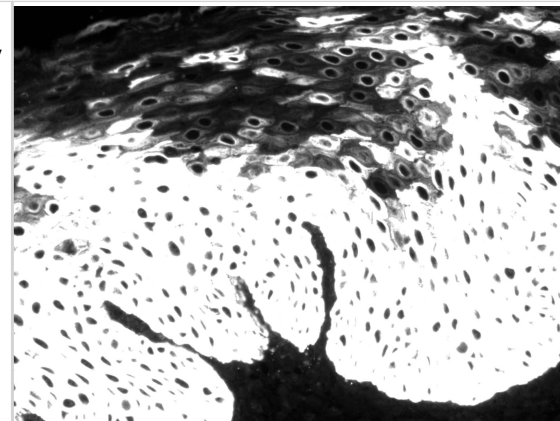
Immunohistochemistry-Paraffin: Cytokeratin 14 Antibody (SPM263) [NBP2-34355] - Formalin-paraffin prostate (10X) stained with Cytokeratin 14 MAb (SPM263).



Flow Cytometry: Cytokeratin 14 Antibody (SPM263) [NBP2-34355] - Enrichment of Cytokeratin 14 (high cells after UTX knockdown in HBLAK cells. Cytokeratin 14 expression as detected by flow cytometry on day 4 after transfection of control siRNA or UTX-siRNA (n = 4). Statistics were performed with a two-way ANOVA with a post-hoc Tukey HSD test (## p < 0.01; ### p < 0.001). Image collected and cropped by CiteAb from the following publication (<https://www.mdpi.com/2072-6694/12/4/1023/htm>), licensed under a CC-BY license.



Immunohistochemistry-Paraffin: Cytokeratin 14 Antibody (SPM263) [NBP2-34355] - Immunohistochemistry-Paraffin: Cytokeratin 14 Antibody (SPM263) - Human Tonsil tissue with epithelial CK14 expression as monochromatic image. Image from verified customer review.



Publications

Coutier J, Bonnette M, Martineau S Et al. Human-Induced Pluripotent Stem Cell-Derived Keratinocytes, a Useful Model to Identify and Explore the Pathological Phenotype of Epidermolysis Bullosa Simplex J Invest Dermatol 2022-05-01 [PMID: 35490743]

Details:

Citation using the Azide and BSA Free version of this antibody.

Lee SW, Park HJ, Pei Y et al. Topical application of zwitterionic chitosan suppresses neutrophil-mediated acute skin inflammation Int. J. Biol. Macromol. 2020-05-06 [PMID: 32387602]

Lang A, Whongsiri P, et al. Knockdown of UTX/KDM6A Enriches Precursor Cell Populations in Urothelial Cell Cultures and Cell Lines. Cancers (Basel) 2020-04-21 [PMID: 32326336] (FLOW, Human)

Fortunel NO, Chadli L, Coutier J et al. KLF4 inhibition promotes the expansion of keratinocyte precursors from adult human skin and of embryonic-stem-cell-derived keratinocytes Nat Biomed Eng 2019-10-21 [PMID: 31636412] (FLOW, Human)

Details:

The Alexa Fluor 488 conjugated version of this antibody was used, NBP2-34720AF488.



Novus Biologicals USA

10730 E. Briarwood Avenue
Centennial, CO 80112
USA
Phone: 303.730.1950
Toll Free: 1.888.506.6887
Fax: 303.730.1966
nb-customerservice@bio-techne.com

Bio-Techne Canada

21 Canmotor Ave
Toronto, ON M8Z 4E6
Canada
Phone: 905.827.6400
Toll Free: 855.668.8722
Fax: 905.827.6402
canada.inquires@bio-techne.com

Bio-Techne Ltd

19 Barton Lane
Abingdon Science Park
Abingdon, OX14 3NB, United Kingdom
Phone: (44) (0) 1235 529449
Free Phone: 0800 37 34 15
Fax: (44) (0) 1235 533420
info.EMEA@bio-techne.com

General Contact Information

www.novusbio.com
Technical Support: nb-technical@bio-techne.com
Orders: nb-customerservice@bio-techne.com
General: novus@novusbio.com

Products Related to NBP2-34355-0.1mg

HAF007	Goat anti-Mouse IgG Secondary Antibody [HRP]
NB720-B	Rabbit anti-Mouse IgG (H+L) Secondary Antibody [Biotin]
NBP1-96978	Mouse IgG3 Kappa Light Chain Isotype Control (MG3K)
NBP1-72467-100ug	Recombinant Human Cytokeratin 14 His Protein

Limitations

This product is for research use only and is not approved for use in humans or in clinical diagnosis. Primary Antibodies are guaranteed for 1 year from date of receipt.

For more information on our 100% guarantee, please visit www.novusbio.com/guarantee

Earn gift cards/discounts by submitting a review: www.novusbio.com/reviews/submit/NBP2-34355

Earn gift cards/discounts by submitting a publication using this product:
www.novusbio.com/publications

