

Product Datasheet

Insulin Antibody (E2-E3 (same as INS04)) NBP2-34260-0.1mg

Unit Size: 0.1 mg

Store at 4C.

www.novusbio.com



technical@novusbio.com

Reviews: 5 Publications: 4

Protocols, Publications, Related Products, Reviews, Research Tools and Images at:
www.novusbio.com/NBP2-34260

Updated 10/23/2024 v.20.1

Earn rewards for product
reviews and publications.

Submit a publication at www.novusbio.com/publications

Submit a review at www.novusbio.com/reviews/destination/NBP2-34260



NBP2-34260-0.1mg

Insulin Antibody (E2-E3 (same as INS04))

| Product Information | |
|-------------------------|--------------------------|
| Unit Size | 0.1 mg |
| Concentration | 0.2 mg/ml |
| Storage | Store at 4C. |
| Clonality | Monoclonal |
| Clone | E2-E3 (same as INS04) |
| Preservative | 0.05% Sodium Azide |
| Isotype | IgG1 Kappa |
| Purity | Protein A or G purified |
| Buffer | 10 mM PBS with 0.05% BSA |
| Target Molecular Weight | 6 kDa |

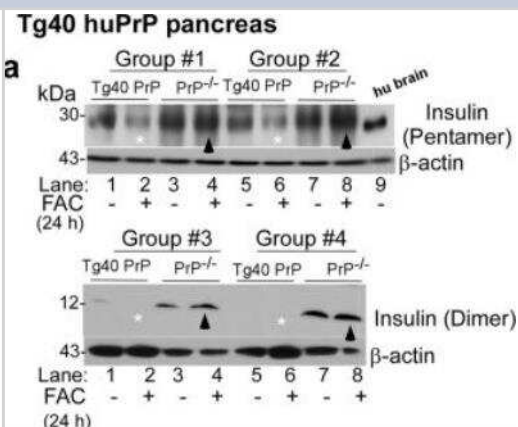
| Product Description | |
|-------------------------|--|
| Description | 200ug/ml of antibody purified from Bioreactor Concentrate by Protein A or G. Prepared in 10 mM PBS with 0.05% BSA & 0.05% azide. Also available WITHOUT BSA & azide at 1.0 mg/ml. (NBP2-34611) Antibody with azide - store at 2 to 8C. Antibody without azide - store at -20 to -80C. |
| Host | Mouse |
| Gene ID | 3630 |
| Gene Symbol | INS |
| Species | Human, Mouse, Porcine, Bovine, Rabbit |
| Marker | beta-Cell & Insulinoma Marker |
| Specificity/Sensitivity | Recognizes a polypeptide which is identified as insulin, a 51-amino acid polypeptide composed of A and B chains connected through the C-peptide. Proinsulin, which has very little biological activity, is cleaved by proteases within its cell of origin into the insulin molecule and the C-terminal basic residue. Insulin enhances membrane transport of glucose, amino acids, and certain ions. It also promotes glycogen storage, formation of triglycerides, and synthesis of proteins and nucleic acids. Deficiency of insulin results in diabetes mellitus. The main storage site for insulin is the pancreatic islets. Antibodies to insulin are important as beta-cell and insulinoma marker. |
| Immunogen | Purified pig insulin, conjugated to KLH (Uniprot: P01308) |

| Product Application Details | |
|-----------------------------|---|
| Applications | Western Blot, Immunohistochemistry, Immunohistochemistry-Paraffin |
| Recommended Dilutions | Western Blot 0.5-1ug/ml, Immunohistochemistry, Immunohistochemistry-Paraffin 1-2 ug/ml |
| Application Notes | Immunohistochemistry (Formalin-fixed): 1-2ug/ml for 30 minutes at RT. Staining of formalin-fixed tissues requires heating tissue sections in 10mM Tris with 1mM EDTA, pH 9.0, for 45 min at 95C followed by cooling at RT for 20 minutes. Optimal dilution for a specific application should be determined. |

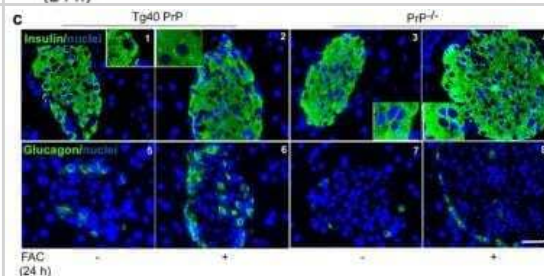


Images

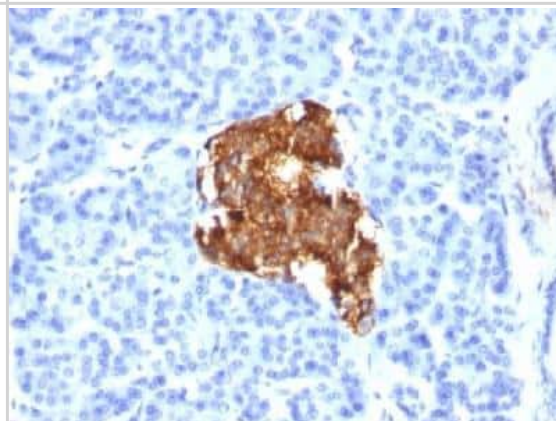
Western Blot: Insulin Antibody (E2-E3 (same as INS04)) [NBP2-34260] - Probing of Western blots of pancreatic lysates from control and iron overloaded Tg40 PrP and PrP^{-/-} mice with antibodies specific for insulin dimer and pentamer (upper and lower panels) shows decreased expression in Tg40 PrP relative to PrP^{-/-} samples (lanes 1 & 5 vs. 3 & 7). Image collected and cropped by CiteAb from the following publication ([nature.com/articles/s41598-018-24786-1](https://www.nature.com/articles/s41598-018-24786-1)), licensed under a CC-BY license.



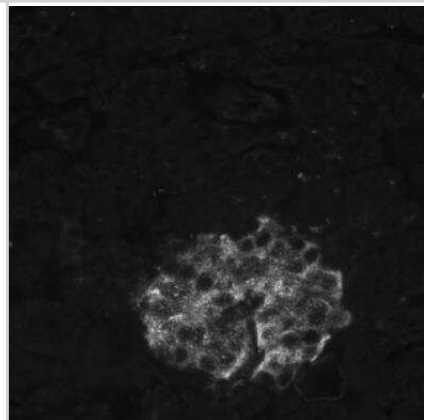
Immunohistochemistry: Insulin Antibody (E2-E3 (same as INS04)) [NBP2-34260] - Immunohistochemistry of pancreas shows relatively higher reactivity for insulin in PrP^{-/-} relative to Tg40 PrP sections (panels 1 & 3). Iron overloading decreases insulin reactivity in Tg40 PrP but not in PrP^{-/-} samples (panels 1 vs. 2 & 3 vs. 4). Reaction for glucagon is higher in iron overloaded Tg40 PrP relative to control samples (panels 5 & 6). The difference is minimal in PrP^{-/-} samples (panels 7 & 8). Image collected and cropped by CiteAb from the following publication (<https://www.nature.com/articles/s41598-018-24786-1>), licensed under a CC-BY license.



Immunohistochemistry-Paraffin: Insulin Antibody (E2-E3 (same as INS04)) [NBP2-34260] - Formalin-fixed, paraffin-embedded human pancreas stained with insulin Monoclonal Antibody (E2-E3)



Immunohistochemistry-Paraffin: Insulin Antibody (E2-E3 (same as INS04)) [NBP2-34260] - Insulin E2E3, human pancreas (FFPE), HIER pH 9 antigen retrieval. Image from verified customer review.



Publications

Rizk AA, Dybala MP, Rodriguez KC et al. Pancreatic regional blood flow links the endocrine and exocrine diseases The Journal of clinical investigation 2023-06-20 [PMID: 37338995] (IHC, Monkey, Porcine, Mouse, Human, Rabbit, Ferret)

Simon L, Torres D, Saravia A et al. Chronic binge alcohol and ovariectomy-mediated impaired insulin responsiveness in SIV-infected female rhesus macaques American journal of physiology. Regulatory, integrative and comparative physiology 2021-09-15 [PMID: 34524906]

Ashok A, Singh N Prion protein modulates glucose homeostasis by altering intracellular iron Scientific Reports 2018-04-26 [PMID: 29700330]

Ahlers LRH, Trammell CE, Carrell GF et al. Insulin Potentiates JAK/STAT Signaling to Broadly Inhibit Flavivirus Replication in Insect Vectors Cell Rep 2019-11-12 [PMID: 31722209] (WB, Bovine)



**Novus Biologicals USA**

10730 E. Briarwood Avenue
Centennial, CO 80112
USA
Phone: 303.730.1950
Toll Free: 1.888.506.6887
Fax: 303.730.1966
nb-customerservice@bio-techne.com

Bio-Techne Canada

21 Canmotor Ave
Toronto, ON M8Z 4E6
Canada
Phone: 905.827.6400
Toll Free: 855.668.8722
Fax: 905.827.6402
canada.inquires@bio-techne.com

Bio-Techne Ltd

19 Barton Lane
Abingdon Science Park
Abingdon, OX14 3NB, United Kingdom
Phone: (44) (0) 1235 529449
Free Phone: 0800 37 34 15
Fax: (44) (0) 1235 533420
info.EMEA@bio-techne.com

General Contact Information

www.novusbio.com
Technical Support: nb-technical@bio-techne.com
Orders: nb-customerservice@bio-techne.com
General: novus@novusbio.com

Products Related to NBP2-34260-0.1mg

| | |
|------------------|---|
| HAF007 | Goat anti-Mouse IgG Secondary Antibody [HRP] |
| NB720-B | Rabbit anti-Mouse IgG (H+L) Secondary Antibody [Biotin] |
| NBP1-43319-0.5mg | Mouse IgG1 Kappa Isotype Control (P3.6.2.8.1) |
| NBP1-87485PEP | Insulin Recombinant Protein Antigen |

Limitations

This product is for research use only and is not approved for use in humans or in clinical diagnosis. Primary Antibodies are guaranteed for 1 year from date of receipt.

For more information on our 100% guarantee, please visit www.novusbio.com/guarantee

Earn gift cards/discounts by submitting a review: www.novusbio.com/reviews/submit/NBP2-34260

Earn gift cards/discounts by submitting a publication using this product:
www.novusbio.com/publications

