

# Product Datasheet

## Ku70/XRCC6 Antibody (KU729)

### NBP2-34247-0.1mg

Unit Size: 0.1 mg

Store at 4C.

[www.novusbio.com](http://www.novusbio.com)



[technical@novusbio.com](mailto:technical@novusbio.com)

**Reviews: 1**

Protocols, Publications, Related Products, Reviews, Research Tools and Images at:  
[www.novusbio.com/NBP2-34247](http://www.novusbio.com/NBP2-34247)

Updated 10/23/2024 v.20.1

**Earn rewards for product reviews and publications.**

Submit a publication at [www.novusbio.com/publications](http://www.novusbio.com/publications)

Submit a review at [www.novusbio.com/reviews/destination/NBP2-34247](http://www.novusbio.com/reviews/destination/NBP2-34247)



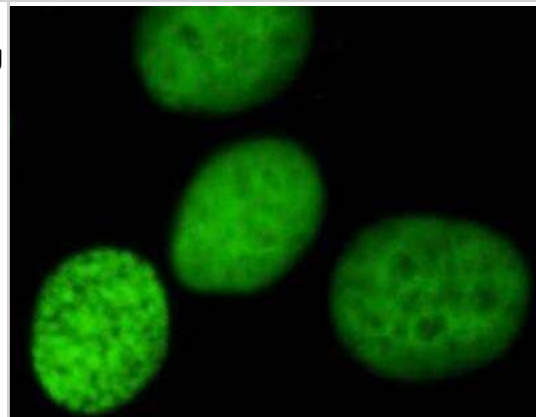
**NBP2-34247-0.1mg**

Ku70/XRCC6 Antibody (KU729)

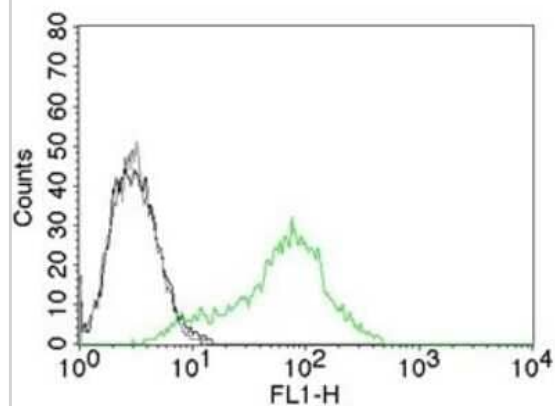
<b>Product Information</b>	
<b>Unit Size</b>	0.1 mg
<b>Concentration</b>	0.2 mg/ml
<b>Storage</b>	Store at 4C.
<b>Clonality</b>	Monoclonal
<b>Clone</b>	KU729
<b>Preservative</b>	0.05% Sodium Azide
<b>Isotype</b>	IgG1 Kappa
<b>Purity</b>	Protein A or G purified
<b>Buffer</b>	10 mM PBS with 0.05% BSA
<b>Product Description</b>	
<b>Description</b>	200ug/ml of antibody purified from Bioreactor Concentrate by Protein A or G. Prepared in 10 mM PBS with 0.05% BSA & 0.05% azide. Also available WITHOUT BSA & azide at 1.0 mg/ml. (NBP2-34663)  Antibody with azide - store at 2 to 8C. Antibody without azide - store at -20 to -80 C.
<b>Host</b>	Mouse
<b>Gene ID</b>	2547
<b>Gene Symbol</b>	XRCC6
<b>Species</b>	Human, Primate, Chicken (Negative), Mouse (Negative), Rat (Negative)
<b>Reactivity Notes</b>	Does not react with Mouse, Rat and Chicken.
<b>Marker</b>	Nuclear Marker
<b>Specificity/Sensitivity</b>	Recognizes a dimer of two proteins of 70kDa and ~80kDa, identified as two subunits of Ku. This monoclonal antibody recognizes a conformational epitope of p70/p80 dimer, which is destroyed during Western blotting. The p70/p80 dimer is important for function of a 460kDa DNA-dependent protein kinase. Ku protein plays a role in cell signaling, proliferation, DNA repair, replication, transcriptional activation, and apoptosis.
<b>Immunogen</b>	Nuclear extract of human HL-60 cells
<b>Product Application Details</b>	
<b>Applications</b>	Flow Cytometry, Flow (Intracellular), Immunocytochemistry/ Immunofluorescence
<b>Recommended Dilutions</b>	Flow Cytometry 1-2 ug/million cells, Immunocytochemistry/ Immunofluorescence 1-2 ug/ml, Flow (Intracellular)
<b>Application Notes</b>	Immunocytochemistry (Acetone-fixed cells): 0.5-1.0ug/ml for 30 minutes at RT. Optimal dilution for a specific application should be determined. Optimal dilution for a specific application should be determined.

## Images

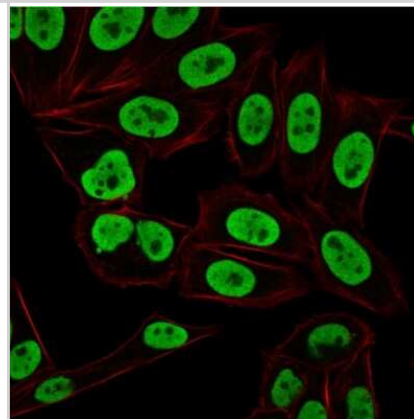
Immunocytochemistry/Immunofluorescence: Ku70/XRCC6 Antibody (KU729) [NBP2-34247] - Immunofluorescent analysis of HeLa cells using Ku70/XRCC6 antibody (KU729). Image from verified customer review.



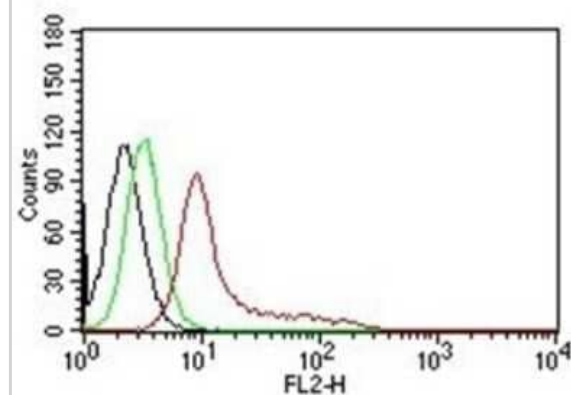
Flow Cytometry: Ku70/XRCC6 Antibody (KU729) [NBP2-34247] - Flow Cytometric Analysis of human Ku (p70/p80) on 293T cells. Black: cells alone; Grey: Isotype Control; Green: AF488-labeled Ku70/XRCC6 Antibody (KU729).



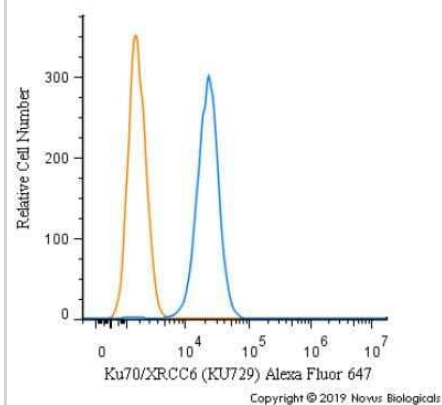
Immunocytochemistry/Immunofluorescence: Ku70/XRCC6 Antibody (KU729) [NBP2-34247] - Immunofluorescent staining of paraformaldehyde-fixed HeLa cells using followed by goat anti-Mouse IgG-CF488 (Green). Phalloidin (Red) is used to label cell membrane.



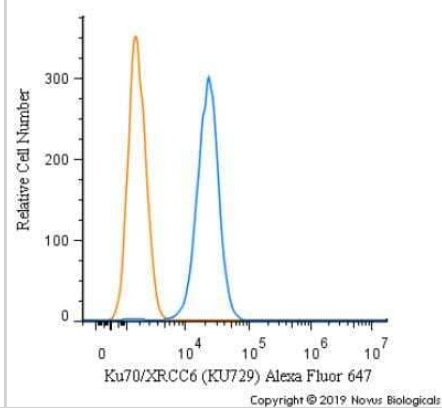
Flow Cytometry: Ku70/XRCC6 Antibody (KU729) [NBP2-34247] - Flow Cytometry of human Ku (p70/p80) on K562 cells. Black: cells alone; Green: Isotype Control; Red: PE-labeled Ku70/XRCC6 Antibody (KU729).



Flow (Intracellular): Ku70/XRCC6 Antibody (KU729) [NBP2-34247] - An intracellular stain was performed on Hek293 cells with Ku70/XRCC6 Antibody (KU729) NBP2-34663AF647 (blue) and a matched isotype control (orange). Cells were fixed with 4% PFA and then permeabilized with 0.1% saponin. Cells were incubated in an antibody dilution of 2.5 ug/mL for 30 minutes at room temperature. Both antibodies were conjugated to Alexa Fluor 647.



Flow (Intracellular): Ku70/XRCC6 Antibody (KU729) [NBP2-34247] - An intracellular stain was performed on Hek293 cells with Ku70/XRCC6 Antibody (KU729) NBP2-34663AF647 (blue) and a matched isotype control (orange). Cells were fixed with 4% PFA and then permeabilized with 0.1% saponin. Cells were incubated in an antibody dilution of 2.5 ug/mL for 30 minutes at room temperature. Both antibodies were conjugated to Alexa Fluor 647.





### **Novus Biologicals USA**

10730 E. Briarwood Avenue  
Centennial, CO 80112  
USA  
Phone: 303.730.1950  
Toll Free: 1.888.506.6887  
Fax: 303.730.1966  
nb-customerservice@bio-techne.com

### **Bio-Techne Canada**

21 Canmotor Ave  
Toronto, ON M8Z 4E6  
Canada  
Phone: 905.827.6400  
Toll Free: 855.668.8722  
Fax: 905.827.6402  
canada.inquires@bio-techne.com

### **Bio-Techne Ltd**

19 Barton Lane  
Abingdon Science Park  
Abingdon, OX14 3NB, United Kingdom  
Phone: (44) (0) 1235 529449  
Free Phone: 0800 37 34 15  
Fax: (44) (0) 1235 533420  
info.EMEA@bio-techne.com

### **General Contact Information**

www.novusbio.com  
Technical Support: nb-technical@bio-techne.com  
Orders: nb-customerservice@bio-techne.com  
General: novus@novusbio.com

### **Products Related to NBP2-34247-0.1mg**

---

HAF007	Goat anti-Mouse IgG Secondary Antibody [HRP]
NB720-B	Rabbit anti-Mouse IgG (H+L) Secondary Antibody [Biotin]
NBP1-43319-0.5mg	Mouse IgG1 Kappa Isotype Control (P3.6.2.8.1)
NBP2-38954PEP	Ku70/XRCC6 Recombinant Protein Antigen

---

### **Limitations**

This product is for research use only and is not approved for use in humans or in clinical diagnosis. Primary Antibodies are guaranteed for 1 year from date of receipt.

For more information on our 100% guarantee, please visit [www.novusbio.com/guarantee](http://www.novusbio.com/guarantee)

Earn gift cards/discounts by submitting a review: [www.novusbio.com/reviews/submit/NBP2-34247](http://www.novusbio.com/reviews/submit/NBP2-34247)

Earn gift cards/discounts by submitting a publication using this product:  
[www.novusbio.com/publications](http://www.novusbio.com/publications)

