

Product Datasheet

Actin (Muscle Specific) Antibody (HHF35) NBP2-34230-0.1mg

Unit Size: 0.1 mg

Store at 4C.

www.novusbio.com



technical@novusbio.com

Publications: 1

Protocols, Publications, Related Products, Reviews, Research Tools and Images at:
www.novusbio.com/NBP2-34230

Updated 4/13/2025 v.20.1

Earn rewards for product
reviews and publications.

Submit a publication at www.novusbio.com/publications

Submit a review at www.novusbio.com/reviews/destination/NBP2-34230



NBP2-34230-0.1mg

Actin (Muscle Specific) Antibody (HHF35)

Product Information	
Unit Size	0.1 mg
Concentration	0.2 mg/ml
Storage	Store at 4C.
Clonality	Monoclonal
Clone	HHF35
Preservative	0.05% Sodium Azide
Isotype	IgG1 Kappa
Purity	Protein A or G purified
Buffer	10 mM PBS with 0.05% BSA

Product Description	
Description	200ug/ml of antibody purified from Bioreactor Concentrate by Protein A or G. Prepared in 10 mM PBS with 0.05% BSA & 0.05% azide. Also available WITHOUT BSA & azide at 1.0 mg/ml. (NBP2-34634) Antibody with azide - store at 2 to 8C. Antibody without azide - store at -20 to -80C.
Host	Mouse
Gene ID	58
Gene Symbol	ACTA1
Species	Human, Mouse, Rat, Canine, Chicken, Feline, Rabbit
Marker	Muscle Cell Marker
Specificity/Sensitivity	This antibody recognizes actin of skeletal, cardiac, and smooth muscle cells. It is not reactive with other mesenchymal cells except for myoepithelium. Actin can be resolved on the basis of its isoelectric points into three distinctive components: alpha, beta, and gamma in order of increasing isoelectric point. Anti-muscle specific actin recognizes alpha and gamma isotypes of all muscle groups. Non-muscle cells such as vascular endothelial cells and connective tissues are non-reactive. Also, neoplastic cells of non-muscle-derived tissue such as carcinomas, melanomas, and lymphomas are negative. It stains tumors of smooth muscle (leiomyomas and leiomyosarcomas) as well as skeletal muscle (rhabdomyomas and rhabdomyosarcomas).
Immunogen	SDS extract of human myocardium.

Product Application Details	
Applications	Western Blot, Simple Western, Flow Cytometry, Immunocytochemistry/Immunofluorescence, Immunohistochemistry, Immunohistochemistry-Paraffin
Recommended Dilutions	Western Blot 0.5-1.0ug/ml, Simple Western 10 ug/ml, Flow Cytometry 1-2 ug/million cells, Immunohistochemistry, Immunocytochemistry/Immunofluorescence 1-2 ug/ml, Immunohistochemistry-Paraffin 0.25-0.5 ug/ml



Application Notes

Immunohistochemistry (Formalin-fixed): 0.25-0.5ug/ml for 30 minutes at RT. Staining of formalin-fixed tissues requires heating tissue sections in 10mM Tris with 1mM EDTA, pH 9.0, for 45 min at 95C followed by cooling at RT for 20 minutes.

Optimal dilution for a specific application should be determined.

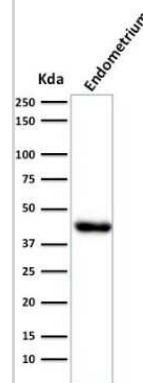
Immunohistochemistry (No special pretreatment is required for the IHC staining of formalin-fixed, paraffin-embedded tissues.).

In Simple Western only 10 - 15 ul of the recommended dilution is used per data point.

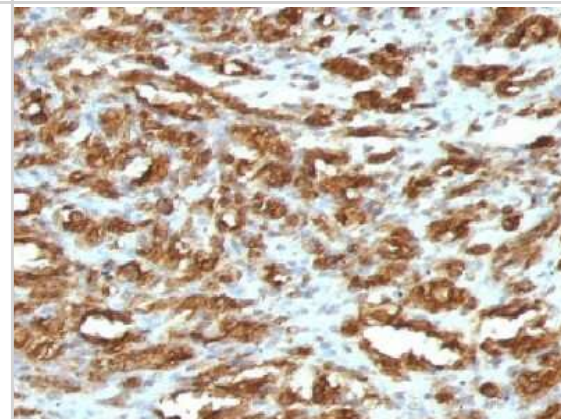
See [Simple Western Antibody Database](#) for Simple Western validation: Tested in Muscle (Sk) lysate(s), separated by Size, antibody dilution of 10 ug/mL, apparent MW was 48 kDa.

Images

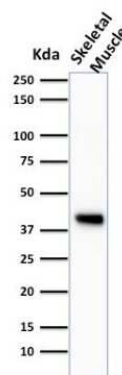
Western Blot: Actin (Muscle Specific) Antibody (HHF35) [NBP2-34230] - Analysis of Endometrium muscle tissue lysate using pan Actin Antibody (HHF35).



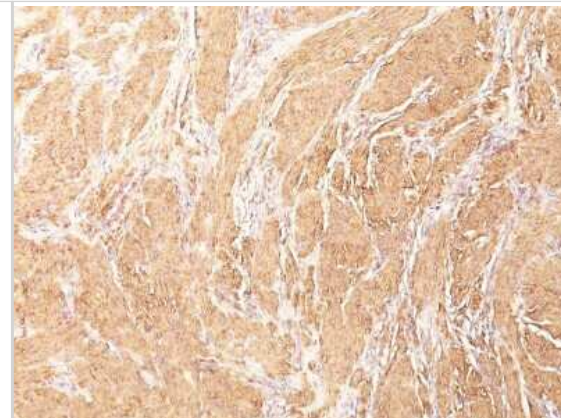
Immunohistochemistry-Paraffin: Actin (Muscle Specific) Antibody (HHF35) [NBP2-34230] - Formalin-fixed paraffin-embedded human Rhabdomyosarcoma stained with muscle specific actin monoclonal antibody (HHF35)



Western Blot: Actin (Muscle Specific) Antibody (HHF35) [NBP2-34230] - Analysis of Skeletal muscle tissue lysate using pan Actin Antibody (HHF35).



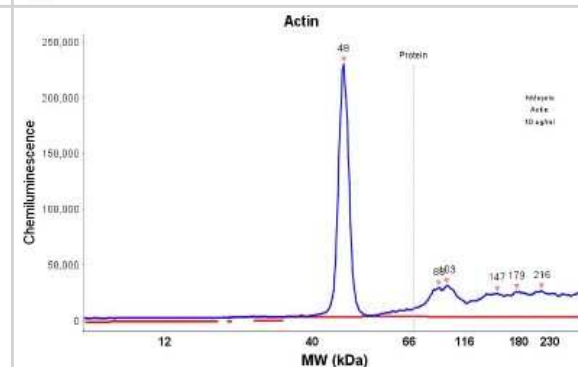
Immunohistochemistry-Paraffin: Actin (Muscle Specific) Antibody (HHF35) [NBP2-34230] - Formalin-fixed, paraffin-embedded human leiomyosarcoma (10X) stained with muscle specific actin MAb (HHF35)



Simple Western: Actin (Muscle Specific) Antibody (HHF35) [NBP2-34230] - Simple Western lane view shows a specific band for pan Actin in 0.2 mg/ml of Muscle (Sk) lysate(s). This experiment was performed under reducing conditions using the 12-230 kDa separation system.



Simple Western: Actin (Muscle Specific) Antibody (HHF35) [NBP2-34230] - Electropherogram image of the corresponding Simple Western lane. pan Actin antibody was used at 10 ug/ml dilution of Muscle (Sk) lysates(s) respectively.



Publications

Matsumoto C, Sekine H, Zhang N et al. Role of p53 in Cisplatin-Induced Myotube Atrophy International Journal of Molecular Sciences 2023-05-24 [PMID: 37298128] (Simple Western, Mouse)

Details:

Dilution: 10 ?g/mL



Novus Biologicals USA

10730 E. Briarwood Avenue
Centennial, CO 80112
USA
Phone: 303.730.1950
Toll Free: 1.888.506.6887
Fax: 303.730.1966
nb-customerservice@bio-techne.com

Bio-Techne Canada

21 Canmotor Ave
Toronto, ON M8Z 4E6
Canada
Phone: 905.827.6400
Toll Free: 855.668.8722
Fax: 905.827.6402
canada.inquires@bio-techne.com

Bio-Techne Ltd

19 Barton Lane
Abingdon Science Park
Abingdon, OX14 3NB, United Kingdom
Phone: (44) (0) 1235 529449
Free Phone: 0800 37 34 15
Fax: (44) (0) 1235 533420
info.EMEA@bio-techne.com

General Contact Information

www.novusbio.com
Technical Support: nb-technical@bio-techne.com
Orders: nb-customerservice@bio-techne.com
General: novus@novusbio.com

Products Related to NBP2-34230-0.1mg

HAF007	Goat anti-Mouse IgG Secondary Antibody [HRP]
NB720-B	Rabbit anti-Mouse IgG (H+L) Secondary Antibody [Biotin]
NBP1-43319-0.5mg	Mouse IgG1 Kappa Isotype Control (P3.6.2.8.1)
664-LI-025	LIGHT/TNFSF14 [Unconjugated]

Limitations

This product is for research use only and is not approved for use in humans or in clinical diagnosis. Primary Antibodies are guaranteed for 1 year from date of receipt.

For more information on our 100% guarantee, please visit www.novusbio.com/guarantee

Earn gift cards/discounts by submitting a review: www.novusbio.com/reviews/submit/NBP2-34230

Earn gift cards/discounts by submitting a publication using this product:
www.novusbio.com/publications

