

Product Datasheet

Chymase/CMA1/Mast Cell Chymase Antibody - BSA Free NBP2-33660

Unit Size: 0.1 ml

Store at 4C short term. Aliquot and store at -20C long term. Avoid freeze-thaw cycles.

www.novusbio.com



technical@novusbio.com

Publications: 1

Protocols, Publications, Related Products, Reviews, Research Tools and Images at:
www.novusbio.com/NBP2-33660

Updated 2/23/2025 v.20.1

Earn rewards for product
reviews and publications.

Submit a publication at www.novusbio.com/publications

Submit a review at www.novusbio.com/reviews/destination/NBP2-33660



NBP2-33660**Chymase/CMA1/Mast Cell Chymase Antibody - BSA Free**

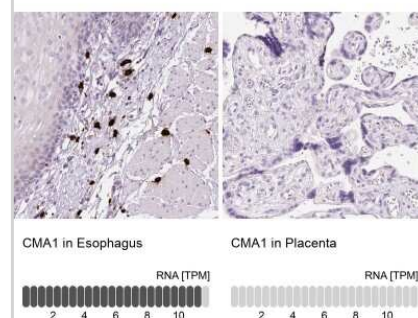
| Product Information | |
|----------------------------|--|
| Unit Size | 0.1 ml |
| Concentration | Concentrations vary lot to lot. See vial label for concentration. If unlisted please contact technical services. |
| Storage | Store at 4C short term. Aliquot and store at -20C long term. Avoid freeze-thaw cycles. |
| Clonality | Polyclonal |
| Preservative | 0.02% Sodium Azide |
| Isotype | IgG |
| Purity | Immunogen affinity purified |
| Buffer | PBS (pH 7.2) and 40% Glycerol |

| Product Description | |
|----------------------------|---|
| Host | Rabbit |
| Gene ID | 1215 |
| Gene Symbol | CMA1 |
| Species | Human |
| Immunogen | This antibody was developed against a recombinant protein corresponding to amino acids: GRTGVLPKPGSDTLQEVLRLMDPQACSHFRDFDHNLQLCVGNPRKTKSAFKG DS |

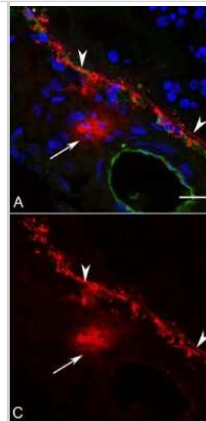
| Product Application Details | |
|------------------------------------|--|
| Applications | Immunocytochemistry/ Immunofluorescence, Immunohistochemistry, Immunohistochemistry-Paraffin |
| Recommended Dilutions | Immunohistochemistry 1:1000 - 1:2500, Immunocytochemistry/ Immunofluorescence Reported in scientific literature (PMID : 29164232), Immunohistochemistry-Paraffin 1:1000 - 1:2500 |
| Application Notes | For IHC-Paraffin, HIER pH 6 retrieval is recommended. |

Images

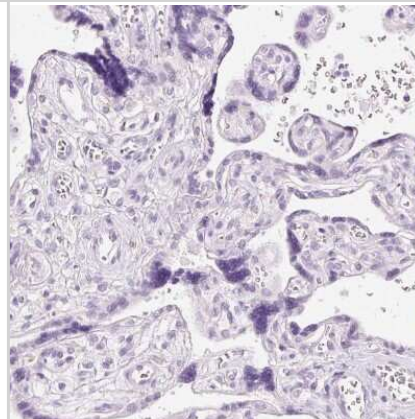
Immunohistochemistry-Paraffin: Chymase/CMA1/Mast Cell Chymase Antibody [NBP2-33660] - Analysis in human esophagus and placenta tissues. Corresponding Chymase/CMA1/Mast Cell Chymase RNA-seq data are presented for the same tissues.



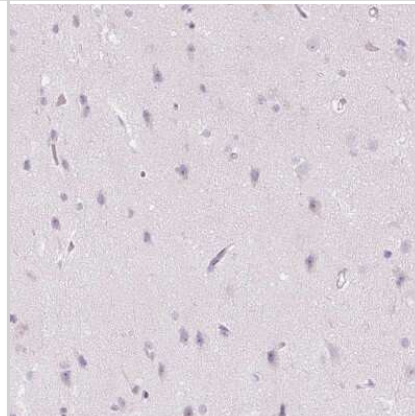
Immunocytochemistry/Immunofluorescence: Chymase/CMA1/Mast Cell Chymase Antibody [NBP2-33660] - Aged control whole mount choroid immunolabeled for (A) UEA lectin (blue), (B) tryptase (red), and (C) chymase (green). The vast majority of human choroidal MCs are of the MCT phenotype (tryptase+/chymase-). Only a small percentage of MCs are MCTc (tryptase+/chymase+) (arrows). Scale bar: 30 um. Image collected and cropped by CiteAb from the following publication (<https://iovs.arvojournals.org/article.aspx?doi=10.1167/iovs.17-22989>), licensed under a CC-BY license.



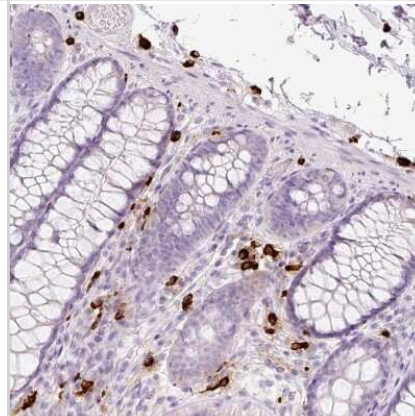
Immunohistochemistry-Paraffin: Chymase/CMA1/Mast Cell Chymase Antibody [NBP2-33660] - Staining of human placenta shows no positivity in trophoblastic cells as expected.



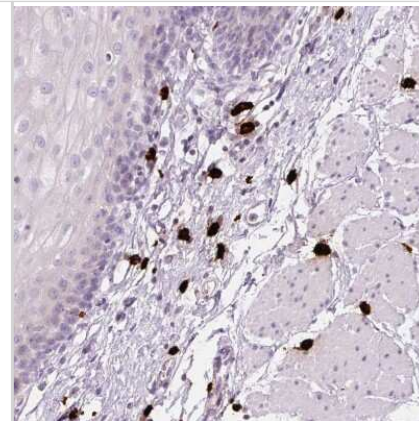
Immunohistochemistry-Paraffin: Chymase/CMA1/Mast Cell Chymase Antibody [NBP2-33660] - Staining of human cerebral cortex shows no positivity in neurons as expected.



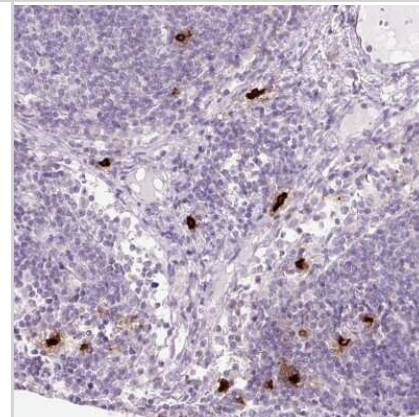
Immunohistochemistry-Paraffin: Chymase/CMA1/Mast Cell Chymase Antibody [NBP2-33660] - Staining of human colon shows strong cytoplasmic positivity in mast cell.



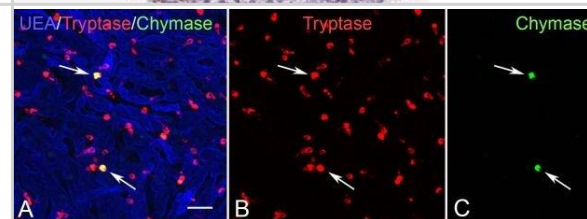
Immunohistochemistry-Paraffin: Chymase/CMA1/Mast Cell Chymase Antibody [NBP2-33660] - Staining of human esophagus shows strong cytoplasmic positivity in mast cell.



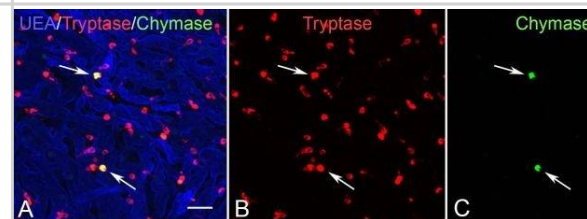
Immunohistochemistry-Paraffin: Chymase/CMA1/Mast Cell Chymase Antibody [NBP2-33660] - Staining of human lymph node shows strong cytoplasmic positivity in mast cell.



Aged control whole mount choroid immunolabeled for (A) UEA lectin (blue), (B) tryptase (red), and (C) chymase (green). The vast majority of human choroidal MCs are of the MCT phenotype (tryptase+/chymase-). Only a small percentage of MCs are MCtc (tryptase+/chymase+) (arrows). Scale bar: 30 μ m.



Immunocytochemistry/ Immunofluorescence: Chymase/CMA1/Mast Cell Chymase Antibody [NBP2-33660] - Aged control whole mount choroid immunolabeled for (A) UEA lectin (blue), (B) tryptase (red), & (C) chymase (green). The vast majority of human choroidal MCs are of the MCT phenotype (tryptase+/chymase-). Only a small percentage of MCs are MCtc (tryptase+/chymase+) (arrows). Scale bar: 30 μ m. Image collected & cropped by CiteAb from the following publication (<https://pubmed.ncbi.nlm.nih.gov/29164232>), licensed under a CC-BY license. Not internally tested by Novus Biologicals.



Publications

McLeod DS, Bhutto I, Edwards MM et al. Mast Cell-Derived Tryptase in Geographic Atrophy Invest. Ophthalmol. Vis. Sci. 2017-11-01 [PMID: 29164232] (ICC/IF, Human)



Novus Biologicals USA

10730 E. Briarwood Avenue
Centennial, CO 80112
USA
Phone: 303.730.1950
Toll Free: 1.888.506.6887
Fax: 303.730.1966
nb-customerservice@bio-techne.com

Bio-Techne Canada

21 Canmotor Ave
Toronto, ON M8Z 4E6
Canada
Phone: 905.827.6400
Toll Free: 855.668.8722
Fax: 905.827.6402
canada.inquires@bio-techne.com

Bio-Techne Ltd

19 Barton Lane
Abingdon Science Park
Abingdon, OX14 3NB, United Kingdom
Phone: (44) (0) 1235 529449
Free Phone: 0800 37 34 15
Fax: (44) (0) 1235 533420
info.EMEA@bio-techne.com

General Contact Information

www.novusbio.com
Technical Support: nb-technical@bio-techne.com
Orders: nb-customerservice@bio-techne.com
General: novus@novusbio.com

Products Related to NBP2-33660

| | |
|---------------|--|
| NBP2-33660PEP | Chymase/CMA1/Mast Cell Chymase Recombinant Protein Antigen |
| HAF008 | Goat anti-Rabbit IgG Secondary Antibody [HRP] |
| NB7160 | Goat anti-Rabbit IgG (H+L) Secondary Antibody [HRP] |
| NBP2-24891 | Rabbit IgG Isotype Control |

Limitations

This product is for research use only and is not approved for use in humans or in clinical diagnosis. Primary Antibodies are guaranteed for 1 year from date of receipt.

For more information on our 100% guarantee, please visit www.novusbio.com/guarantee

Earn gift cards/discounts by submitting a review: www.novusbio.com/reviews/submit/NBP2-33660

Earn gift cards/discounts by submitting a publication using this product:
www.novusbio.com/publications

