

Product Datasheet

Gasdermin like Antibody - BSA Free NBP2-33648

Unit Size: 0.1 ml

Store at 4C short term. Aliquot and store at -20C long term. Avoid freeze-thaw cycles.

www.novusbio.com



technical@novusbio.com

Protocols, Publications, Related Products, Reviews, Research Tools and Images at:
www.novusbio.com/NBP2-33648

Updated 2/23/2025 v.20.1

Earn rewards for product
reviews and publications.

Submit a publication at www.novusbio.com/publications

Submit a review at www.novusbio.com/reviews/destination/NBP2-33648



NBP2-33648

Gasdermin like Antibody - BSA Free

Product Information

Unit Size	0.1 ml
Concentration	Concentrations vary lot to lot. See vial label for concentration. If unlisted please contact technical services.
Storage	Store at 4C short term. Aliquot and store at -20C long term. Avoid freeze-thaw cycles.
Clonality	Polyclonal
Preservative	0.02% Sodium Azide
Isotype	IgG
Purity	Immunogen affinity purified
Buffer	PBS (pH 7.2) and 40% Glycerol

Product Description

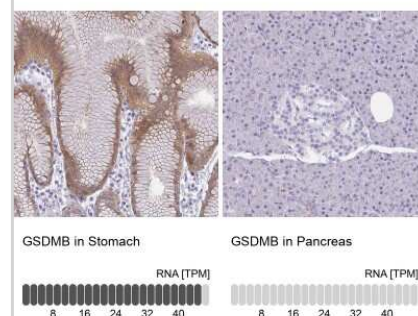
Host	Rabbit
Gene ID	55876
Gene Symbol	GSDMB
Species	Human
Immunogen	This antibody was developed against a recombinant protein corresponding to amino acids: GKSLGSEDSRNMKEKLEDMESVLKDLTEEKRKDVLNSLAKCLGKEDIRQDLEQ RVSEVLISGELHMEDPDKPLLSSLFNAAGVLV

Product Application Details

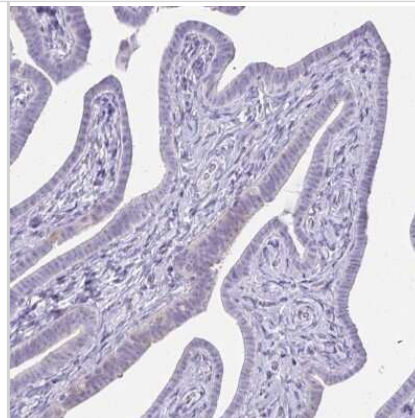
Applications	Immunohistochemistry, Immunohistochemistry-Paraffin
Recommended Dilutions	Immunohistochemistry 1:1000 - 1:2500, Immunohistochemistry-Paraffin 1:1000 - 1:2500
Application Notes	For IHC-Paraffin, HIER pH 6 retrieval is recommended.

Images

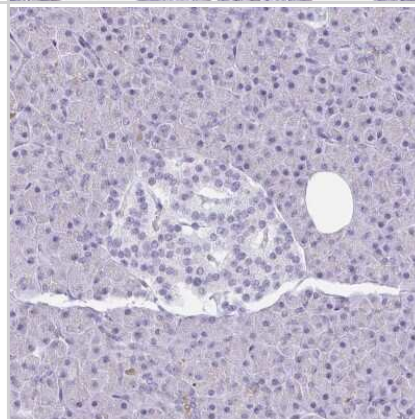
Immunohistochemistry-Paraffin: Gasdermin like Antibody [NBP2-33648]
- Staining in human stomach and pancreas tissues using anti-GSDMB antibody. Corresponding GSDMB RNA-seq data are presented for the same tissues.



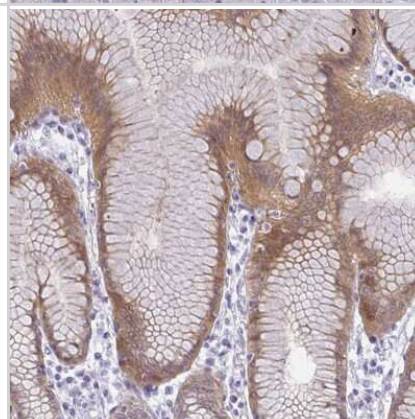
Immunohistochemistry-Paraffin: Gasdermin like Antibody [NBP2-33648]
- Staining of human Fallopian tube shows no positivity in glandular cells as expected.



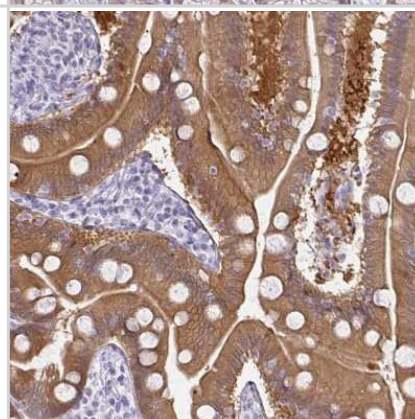
Immunohistochemistry-Paraffin: Gasdermin like Antibody [NBP2-33648]
- Staining of human pancreas shows low expression as expected.



Immunohistochemistry-Paraffin: Gasdermin like Antibody [NBP2-33648]
- Staining of human stomach shows high expression.



Immunohistochemistry-Paraffin: Gasdermin like Antibody [NBP2-33648]
- Staining of human duodenum shows moderate cytoplasmic positivity in glandular cells.





Novus Biologicals USA

10730 E. Briarwood Avenue
Centennial, CO 80112
USA
Phone: 303.730.1950
Toll Free: 1.888.506.6887
Fax: 303.730.1966
nb-customerservice@bio-techne.com

Bio-Techne Canada

21 Canmotor Ave
Toronto, ON M8Z 4E6
Canada
Phone: 905.827.6400
Toll Free: 855.668.8722
Fax: 905.827.6402
canada.inquires@bio-techne.com

Bio-Techne Ltd

19 Barton Lane
Abingdon Science Park
Abingdon, OX14 3NB, United Kingdom
Phone: (44) (0) 1235 529449
Free Phone: 0800 37 34 15
Fax: (44) (0) 1235 533420
info.EMEA@bio-techne.com

General Contact Information

www.novusbio.com
Technical Support: nb-technical@bio-techne.com
Orders: nb-customerservice@bio-techne.com
General: novus@novusbio.com

Error: Subreport could not be shown.

Limitations

This product is for research use only and is not approved for use in humans or in clinical diagnosis. Primary Antibodies are guaranteed for 1 year from date of receipt.

For more information on our 100% guarantee, please visit www.novusbio.com/guarantee

Earn gift cards/discounts by submitting a review: www.novusbio.com/reviews/submit/NBP2-33648

Earn gift cards/discounts by submitting a publication using this product:
www.novusbio.com/publications

