

Product Datasheet

ER alpha/NR3A1 Antibody (ER506)

NBP2-33320-0.1mg

Unit Size: 0.1 mg

Store at 4C.

www.novusbio.com



technical@novusbio.com

Protocols, Publications, Related Products, Reviews, Research Tools and Images at:
www.novusbio.com/NBP2-33320

Updated 2/17/2025 v.20.1

Earn rewards for product
reviews and publications.

Submit a publication at www.novusbio.com/publications

Submit a review at www.novusbio.com/reviews/destination/NBP2-33320



NBP2-33320-0.1mg

ER alpha/NR3A1 Antibody (ER506)

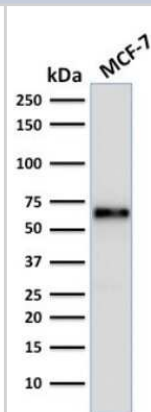
Product Information	
Unit Size	0.1 mg
Concentration	0.2 mg/ml
Storage	Store at 4C.
Clonality	Monoclonal
Clone	ER506
Preservative	0.05% Sodium Azide
Isotype	IgG1 Kappa
Purity	Protein A or G purified
Buffer	10 mM PBS with 0.05% BSA
Target Molecular Weight	67 kDa

Product Description	
Description	200ug/ml of antibody purified from Bioreactor Concentrate by Protein A or G. Prepared in 10 mM PBS with 0.05% BSA & 0.05% azide. Also available WITHOUT BSA & azide at 1.0 mg/ml. (NBP2-33321) Antibody with azide - store at 2 to 8C. Antibody without azide - store at -20 to -80C.
Host	Mouse
Gene ID	2099
Gene Symbol	ESR1
Species	Human
Marker	Marker of Estrogen Dependence
Specificity/Sensitivity	This monoclonal antibody is specific to ER alpha and shows minimal cross-reaction with other members of the family. ER is an important regulator of growth and differentiation in the mammary gland. Presence of ER in breast tumors indicates an increased likelihood of response to anti-estrogen (e.g. tamoxifen) therapy. It strongly stains nuclei of epithelial cells in breast carcinomas.
Immunogen	Recombinant fragment (around aa 2-185) of human ER alpha/NR3A1 protein (exact sequence is proprietary) (Uniprot: P03372)

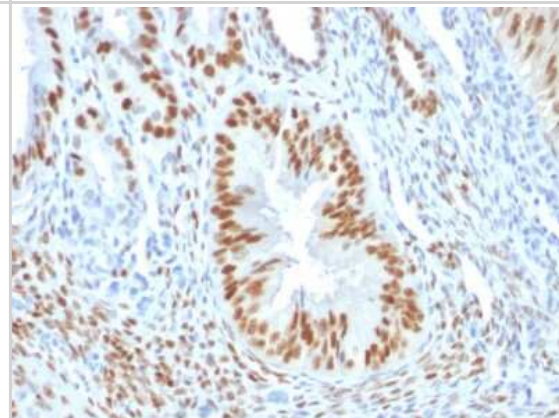
Product Application Details	
Applications	Western Blot, Simple Western, Flow Cytometry, Immunohistochemistry, Immunohistochemistry-Paraffin, Protein Array
Recommended Dilutions	Western Blot 1-2 ug/ml, Simple Western 10 ug/ml, Flow Cytometry 1-2 ug/million cells, Immunohistochemistry 0.5-1.0ug/ml, Immunohistochemistry-Paraffin 0.5-1.0ug/ml, Protein Array
Application Notes	Immunohistochemistry (Formalin-fixed): Staining of formalin-fixed tissues requires heating tissue sections in 10mM Tris with 1mM EDTA, pH 9.0, for 45 min at 95C followed by cooling at RT for 20 minutes. Optimal dilution for a specific application should be determined. In Simple Western only 10 - 15 ul of the recommended dilution is used per data point. See Simple Western Antibody Database for Simple Western validation: Tested in MCF-7 and T47D lysates, separated by Size, antibody dilution of 10 ug/mL, apparent MW was 65 kDa.

Images

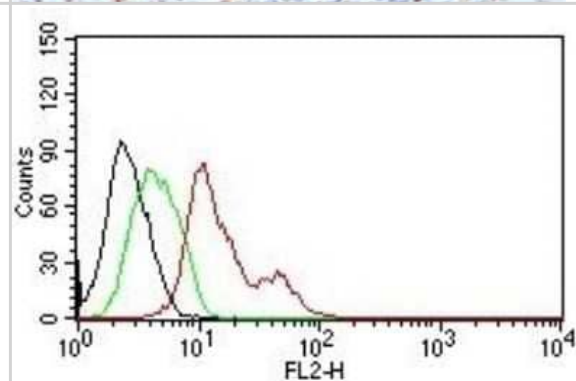
Western Blot: ER alpha/NR3A1 Antibody (ER506) [NBP2-33320] - Western Blot Analysis of human MCF-7 cell lysate using ER alpha/NR3A1 Antibody (ER506).



Immunohistochemistry-Paraffin: ER alpha/NR3A1 Antibody (ER506) [NBP2-33320] - Formalin-fixed, paraffin-embedded human Endometrium stained with ER alpha/NR3A1 Antibody (ER506).



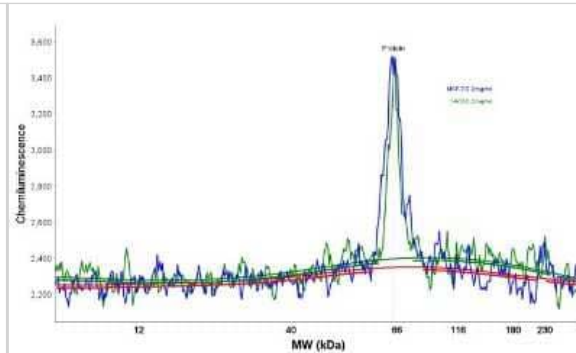
Flow Cytometry: ER alpha/NR3A1 Antibody (ER506) [NBP2-33320] - Flow Cytometry for human ER-alpha on MCF-7 cells. Black: cells alone; Green: Isotype Control; Red: PE-labeled ER alpha/NR3A1 antibody (ER506).



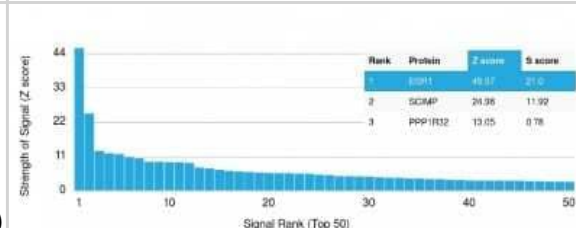
Simple Western: ER alpha/NR3A1 Antibody (ER506) [NBP2-33320] - Simple Western lane view shows a specific band for Estrogen Receptor in 0.2 mg/ml of MCF-7 (left) and T47D (right) lysate(s). This experiment was performed under reducing conditions using the 12-230 kDa separation system.



Simple Western: ER alpha/NR3A1 Antibody (ER506) [NBP2-33320] - Electropherogram image of the corresponding Simple Western lane. Estrogen Receptor antibody was used at 10 ug/ml dilution of MCF-7 and T47D lysates(s) respectively.



Protein Array: ER alpha/NR3A1 Antibody (ER506) [NBP2-33320] - Analysis of Protein Array containing more than 19,000 full-length human proteins using ER alpha/NR3A1 Antibody (ER506). Z- and S- Score: The Z-score represents the strength of a signal that a monoclonal antibody (MAb) (in combination with a fluorescently-tagged anti-IgG secondary antibody) produces when binding to a particular protein on the HuProt (TM) array. Z-scores are described in units of standard deviations (SD?s) above the mean value of all signals generated on that array. If targets on HuProt(TM) are arranged in descending order of the Z-score, the S-score is the difference (also in units of SD?s) between the Z-score. S-score therefore represents the relative target specificity of a MAb to its intended target. A MAb is considered to specific to its intended target, if the MAb has an S-score of at least 2.5.





Novus Biologicals USA

10730 E. Briarwood Avenue
Centennial, CO 80112
USA
Phone: 303.730.1950
Toll Free: 1.888.506.6887
Fax: 303.730.1966
nb-customerservice@bio-techne.com

Bio-Techne Canada

21 Canmotor Ave
Toronto, ON M8Z 4E6
Canada
Phone: 905.827.6400
Toll Free: 855.668.8722
Fax: 905.827.6402
canada.inquires@bio-techne.com

Bio-Techne Ltd

19 Barton Lane
Abingdon Science Park
Abingdon, OX14 3NB, United Kingdom
Phone: (44) (0) 1235 529449
Free Phone: 0800 37 34 15
Fax: (44) (0) 1235 533420
info.EMEA@bio-techne.com

General Contact Information

www.novusbio.com
Technical Support: nb-technical@bio-techne.com
Orders: nb-customerservice@bio-techne.com
General: novus@novusbio.com

Products Related to NBP2-33320-0.1mg

HAF007	Goat anti-Mouse IgG Secondary Antibody [HRP]
NB720-B	Rabbit anti-Mouse IgG (H+L) Secondary Antibody [Biotin]
NBP1-43319-0.5mg	Mouse IgG1 Kappa Isotype Control (P3.6.2.8.1)
H00002099-Q01-10ug	Recombinant Human ER alpha/NR3A1 GST (N-Term) Protein

Limitations

This product is for research use only and is not approved for use in humans or in clinical diagnosis. Primary Antibodies are guaranteed for 1 year from date of receipt.

For more information on our 100% guarantee, please visit www.novusbio.com/guarantee

Earn gift cards/discounts by submitting a review: www.novusbio.com/reviews/submit/NBP2-33320

Earn gift cards/discounts by submitting a publication using this product:
www.novusbio.com/publications

