

Product Datasheet

Cytokeratin, pan Antibody (AE-1/AE-3) [PE] NBP2-33200PE

Unit Size: 0.1 ml

Store at 4C in the dark.

www.novusbio.com



technical@novusbio.com

Reviews: 1 **Publications: 2**

Protocols, Publications, Related Products, Reviews, Research Tools and Images at:
www.novusbio.com/NBP2-33200PE

Updated 10/23/2024 v.20.1

Earn rewards for product
reviews and publications.

Submit a publication at www.novusbio.com/publications

Submit a review at www.novusbio.com/reviews/destination/NBP2-33200PE



NBP2-33200PE

Cytokeratin, pan Antibody (AE-1/AE-3) [PE]

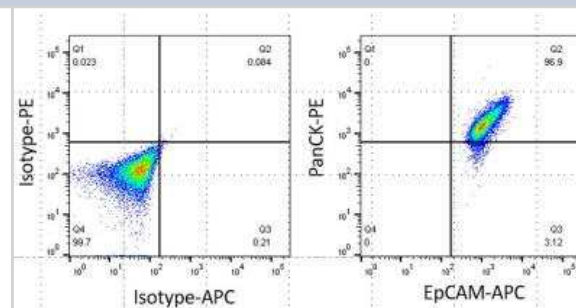
Product Information	
Unit Size	0.1 ml
Concentration	Please see the vial label for concentration. If unlisted please contact technical services.
Storage	Store at 4C in the dark.
Clonality	Monoclonal
Clone	AE-1/AE-3
Preservative	0.05% Sodium Azide
Isotype	IgG1 Kappa/IgG1 Kappa
Conjugate	PE
Purity	Protein A or G purified
Buffer	PBS
Product Description	
Description	This conjugate is made on demand. Actual recovery may vary from the stated volume of this product. The volume will be greater than or equal to the unit size stated on the datasheet.
Host	Mouse
Gene ID	3848
Gene Symbol	KRT1
Species	Human, Mouse, Rat, Bovine, Canine, Chicken, Monkey, Rabbit, Reptile, Zebrafish
Reactivity Notes	Reptile reactivity reported in scientific literature (PMID: 11351328). Zebrafish reactivity reported in scientific literature (PMID: 30970016).
Marker	Epithelial marker
Specificity/Sensitivity	Twenty human keratins are resolved with two-dimensional gel electrophoresis into acidic (pI 6.0) subfamilies. This antibody cocktail recognizes acidic (Type I or LMW) and basic (Type II or HMW) cytokeratins, which 67kDa (CK1); 64kDa (CK3); 59kDa (CK4); 58kDa (CK5); 56kDa (CK6); 52kDa (CK8); 56.5kDa (CK10); 50kDa (CK14); 50kDa (CK15); 48kDa (CK16); 40kDa (CK19). Many studies have shown the usefulness of keratins as markers in cancer research and tumor diagnosis. AE-1/AE-3 is a broad spectrum anti pan-cytokeratin antibody cocktail, which differentiates epithelial tumors from non-epithelial tumors e.g. squamous vs. adenocarcinoma of the lung, liver carcinoma, breast cancer, and esophageal cancer. It has been used to characterize the source of various neoplasms and to study the distribution of cytokeratin containing cells in epithelia during normal development and during the development of epithelial neoplasms. This antibody stains cytokeratins present in normal and abnormal human tissues and has shown high sensitivity in the recognition of epithelial cells and carcinomas.
Immunogen	Human epidermal keratin
Product Application Details	
Applications	Western Blot, Flow Cytometry, Flow (Intracellular), Immunocytochemistry/Immunofluorescence, Immunohistochemistry, Immunohistochemistry-Frozen, Immunohistochemistry-Paraffin, CyTOF-ready, Dual RNAscope ISH-IHC, Single Cell Western



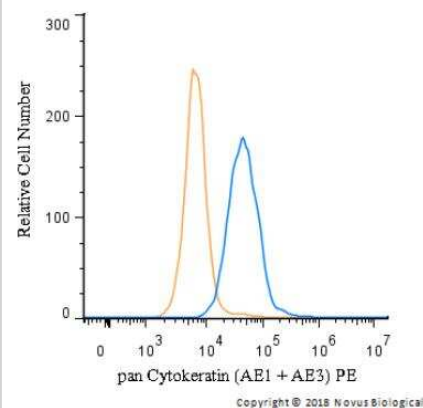
Recommended Dilutions	Western Blot, Flow Cytometry, Immunohistochemistry, Immunocytochemistry/Immunofluorescence, Immunohistochemistry-Paraffin, Immunohistochemistry-Frozen, Flow (Intracellular), CyTOF-ready, Single Cell Western, Dual RNAscope ISH-IHC
Application Notes	Optimal dilution of this antibody should be experimentally determined.

Images

Primary human airway epithelial cells stained with Cytokeratin, pan Antibody (AE-1/AE-3) [PE] at 1:50 for 30 minutes. Cells were washed and analyzed. Flow cytometry image submitted by a verified customer review.



Flow Cytometry: pan Cytokeratin Antibody (AE1 + AE3) [PE] [NBP2-33200PE] - An intracellular stain was performed on HeLa cells with pan Cytokeratin Antibody (AE1 + AE3) NBP2-33200PE (blue) and a matched isotype control (orange). Cells were fixed with 4% PFA and then permeabilized with 0.1% saponin. Cells were incubated in an antibody dilution of 2.5 ug/mL for 30 minutes at room temperature. Both antibodies were conjugated to phycoerythrin.



Publications

Fukushima K, Satoh T, Sugihara F et Al. Dysregulated Expression of the Nuclear Exosome Targeting Complex Component Rbm7 in Nonhematopoietic Cells Licenses the Development of Fibrosis Immunity. [PMID: 32187520]

Gadwa J, Amann M, Bickett TE et al. Selective targeting of IL2R?? combined with radiotherapy triggers CD8- and NK-mediated immunity, abrogating metastasis in HNSCC Cell Reports Medicine 2023-08-15 [PMID: 37586327]



Novus Biologicals USA

10730 E. Briarwood Avenue
Centennial, CO 80112
USA
Phone: 303.730.1950
Toll Free: 1.888.506.6887
Fax: 303.730.1966
nb-customerservice@bio-techne.com

Bio-Techne Canada

21 Canmotor Ave
Toronto, ON M8Z 4E6
Canada
Phone: 905.827.6400
Toll Free: 855.668.8722
Fax: 905.827.6402
canada.inquires@bio-techne.com

Bio-Techne Ltd

19 Barton Lane
Abingdon Science Park
Abingdon, OX14 3NB, United Kingdom
Phone: (44) (0) 1235 529449
Free Phone: 0800 37 34 15
Fax: (44) (0) 1235 533420
info.EMEA@bio-techne.com

General Contact Information

www.novusbio.com
Technical Support: nb-technical@bio-techne.com
Orders: nb-customerservice@bio-techne.com
General: novus@novusbio.com

Products Related to NBP2-33200PE

DNST0	Endostatin [HRP]
MAB1455	Albumin Antibody (188835) [Unconjugated] - Serum
NB100-687	Cytokeratin 19 Antibody - BSA Free
NBP2-16094	Cytokeratin 8 Antibody

Limitations

This product is for research use only and is not approved for use in humans or in clinical diagnosis. Primary Antibodies are guaranteed for 1 year from date of receipt.

For more information on our 100% guarantee, please visit www.novusbio.com/guarantee

Earn gift cards/discounts by submitting a review: www.novusbio.com/reviews/submit/NBP2-33200PE

Earn gift cards/discounts by submitting a publication using this product:
www.novusbio.com/publications

