

Product Datasheet

Cyclin D1 Antibody (DCS-6) [Alexa Fluor® 647] NBP2-33138AF647

Unit Size: 0.1 ml

Store at 4C in the dark.

www.novusbio.com



technical@novusbio.com

Reviews: 1 Publications: 1

Protocols, Publications, Related Products, Reviews, Research Tools and Images at:
www.novusbio.com/NBP2-33138AF647

Updated 10/23/2024 v.20.1

**Earn rewards for product
reviews and publications.**

Submit a publication at www.novusbio.com/publications

Submit a review at www.novusbio.com/reviews/destination/NBP2-33138AF647



NBP2-33138AF647

Cyclin D1 Antibody (DCS-6) [Alexa Fluor® 647]

Product Information	
Unit Size	0.1 ml
Concentration	Please see the vial label for concentration. If unlisted please contact technical services.
Storage	Store at 4C in the dark.
Clonality	Monoclonal
Clone	DCS-6
Preservative	0.05% Sodium Azide
Isotype	IgG2a Kappa
Conjugate	Alexa Fluor 647
Purity	Protein A or G purified
Buffer	50mM Sodium Borate
Product Description	
Host	Mouse
Gene ID	595
Gene Symbol	CCND1
Species	Human, Mouse, Rat, Monkey
Marker	G1-Cyclin & Mantle Cell Marker
Specificity/Sensitivity	Recognizes a protein of 36kDa, identified as cyclin D1. Cyclin D1, one of the key cell cycle regulators, is a putative proto-oncogene overexpressed in a wide variety of human neoplasms. This antibody neutralizes the activity of cyclin D1 in vivo. About 60% of mantle cell lymphomas (MCL) contain a t(11; 14)(q13; q32) translocation resulting in over-expression of cyclin D1. This antibody is useful in identifying mantle cell lymphomas (cyclin D1 positive) from CLL/SLL and follicular lymphomas (cyclin D1 negative). About 40% of breast carcinomas are positive for Cyclin D1. Occasionally, hairy cell leukemia and plasma cell myeloma weakly express Cyclin D1.
Immunogen	Human full length recombinant cyclin D1 protein (Uniprot: P24385)
Notes	Alexa Fluor (R) products are provided under an intellectual property license from Life Technologies Corporation. The purchase of this product conveys to the buyer the non-transferable right to use the purchased product and components of the product only in research conducted by the buyer (whether the buyer is an academic or for-profit entity). The sale of this product is expressly conditioned on the buyer not using the product or its components, or any materials made using the product or its components, in any activity to generate revenue, which may include, but is not limited to use of the product or its components: (i) in manufacturing; (ii) to provide a service, information, or data in return for payment; (iii) for therapeutic, diagnostic or prophylactic purposes; or (iv) for resale, regardless of whether they are resold for use in research. For information on purchasing a license to this product for purposes other than as described above, contact Life Technologies Corporation, 5791 Van Allen Way, Carlsbad, CA 92008 USA or outlicensing@lifetech.com . This conjugate is made on demand. Actual recovery may vary from the stated volume of this product. The volume will be greater than or equal to the unit size stated on the datasheet.

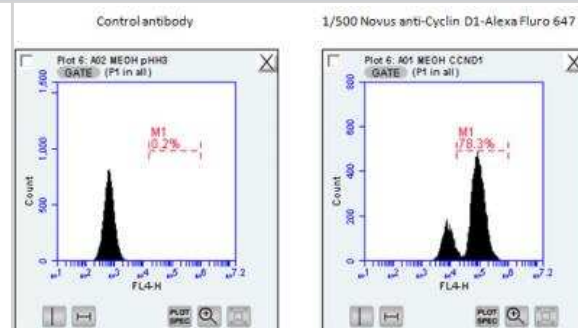


Product Application Details

Applications	Western Blot, Flow Cytometry, Immunocytochemistry/ Immunofluorescence, Immunohistochemistry, Immunohistochemistry-Paraffin
Recommended Dilutions	Western Blot, Flow Cytometry, Immunohistochemistry, Immunocytochemistry/ Immunofluorescence, Immunohistochemistry-Paraffin
Application Notes	Flow reported in a verified customer review.

Images

Flow Cytometry: Cyclin D1 Antibody (DCS-6) [Alexa Fluor (R) 647] [NBP2-33138AF647] - Cyclin D1 staining of HCT116 cells using Alexa Fluor 647 conjugated Cyclin D1 antibody. Image from verified customer review.

**Publications**

Darp R, Vittoria MA, Ganem NJ Et al. Oncogenic BRAF induces whole-genome doubling through suppression of cytokinesis Nat Commun 2022-07-15 [PMID: 35840569] (FLOW, Human)

Details:

Citation using the Alexa Fluor 647 version of this antibody.



Novus Biologicals USA

10730 E. Briarwood Avenue
Centennial, CO 80112
USA
Phone: 303.730.1950
Toll Free: 1.888.506.6887
Fax: 303.730.1966
nb-customerservice@bio-techne.com

Bio-Techne Canada

21 Canmotor Ave
Toronto, ON M8Z 4E6
Canada
Phone: 905.827.6400
Toll Free: 855.668.8722
Fax: 905.827.6402
canada.inquires@bio-techne.com

Bio-Techne Ltd

19 Barton Lane
Abingdon Science Park
Abingdon, OX14 3NB, United Kingdom
Phone: (44) (0) 1235 529449
Free Phone: 0800 37 34 15
Fax: (44) (0) 1235 533420
info.EMEA@bio-techne.com

General Contact Information

www.novusbio.com
Technical Support: nb-technical@bio-techne.com
Orders: nb-customerservice@bio-techne.com
General: novus@novusbio.com

Products Related to NBP2-33138AF647

NBP1-96981AF647	Mouse IgG2a Kappa Isotype Control (M2AK) [Alexa Fluor® 647]
H00000595-P01-10ug	Recombinant Human Cyclin D1 GST (N-Term) Protein
NBP2-75100	Human Cyclin D1 ELISA Kit (Colorimetric)
NB600-302	c-Myc Antibody (9E10) - BSA Free

Limitations

This product is for research use only and is not approved for use in humans or in clinical diagnosis. Primary Antibodies are guaranteed for 1 year from date of receipt.

For more information on our 100% guarantee, please visit www.novusbio.com/guarantee

Earn gift cards/discounts by submitting a review: www.novusbio.com/reviews/submit/NBP2-33138AF647

Earn gift cards/discounts by submitting a publication using this product:
www.novusbio.com/publications

