

Product Datasheet

EpCAM/TROP1 Antibody (VU-1D9) [PE] NBP2-33078PE

Unit Size: 0.1 ml

Store at 4C in the dark.

www.novusbio.com



technical@novusbio.com

Reviews: 1

Protocols, Publications, Related Products, Reviews, Research Tools and Images at:
www.novusbio.com/NBP2-33078PE

Updated 10/23/2024 v.20.1

Earn rewards for product
reviews and publications.

Submit a publication at www.novusbio.com/publications

Submit a review at www.novusbio.com/reviews/destination/NBP2-33078PE



NBP2-33078PE

EpCAM/TROP1 Antibody (VU-1D9) [PE]

Product Information	
Unit Size	0.1 ml
Concentration	Please see the vial label for concentration. If unlisted please contact technical services.
Storage	Store at 4C in the dark.
Clonality	Monoclonal
Clone	VU-1D9
Preservative	0.05% Sodium Azide
Isotype	IgG1 Kappa
Conjugate	PE
Purity	Protein A or G purified
Buffer	PBS

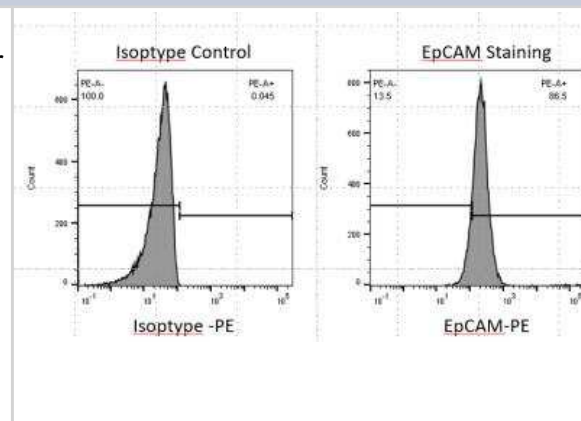
Product Description	
Description	This conjugate is made on demand. Actual recovery may vary from the stated volume of this product. The volume will be greater than or equal to the unit size stated on the datasheet.
Host	Mouse
Gene ID	4072
Gene Symbol	EPCAM
Species	Human, Ferret (Negative), Rat (Negative)
Reactivity Notes	Does not react with Rat and ferret.
Marker	Epithelial Marker
Specificity/Sensitivity	EGP40 is a 40-43kDa transmembrane epithelial glycoprotein, also identified as epithelial specific antigen (ESA), or epithelial cellular adhesion molecule (Ep-CAM). It is expressed on baso-lateral cell surface in most simple epithelia and a vast majority of carcinomas. This antibody has been used to distinguish adenocarcinoma from pleural mesothelioma and hepatocellular carcinoma. This antibody is also useful in distinguishing serous carcinomas of the ovary from mesothelioma.
Immunogen	Small cell lung carcinoma cells

Product Application Details	
Applications	Western Blot, Flow Cytometry, Immunocytochemistry/ Immunofluorescence, Immunohistochemistry, Immunohistochemistry-Paraffin
Recommended Dilutions	Western Blot, Flow Cytometry, Immunohistochemistry, Immunocytochemistry/ Immunofluorescence, Immunohistochemistry-Paraffin



Images

Flow Cytometry: EpCAM/TROP1 Antibody (VU-1D9) [PE] [NBP2-33078PE] - Primary human airway epithelial cells stained with EpCAM or an isotype control antibody. Flow cytometry image submitted by a verified customer review.





Novus Biologicals USA

10730 E. Briarwood Avenue
Centennial, CO 80112
USA
Phone: 303.730.1950
Toll Free: 1.888.506.6887
Fax: 303.730.1966
nb-customerservice@bio-techne.com

Bio-Techne Canada

21 Canmotor Ave
Toronto, ON M8Z 4E6
Canada
Phone: 905.827.6400
Toll Free: 855.668.8722
Fax: 905.827.6402
canada.inquires@bio-techne.com

Bio-Techne Ltd

19 Barton Lane
Abingdon Science Park
Abingdon, OX14 3NB, United Kingdom
Phone: (44) (0) 1235 529449
Free Phone: 0800 37 34 15
Fax: (44) (0) 1235 533420
info.EMEA@bio-techne.com

General Contact Information

www.novusbio.com
Technical Support: nb-technical@bio-techne.com
Orders: nb-customerservice@bio-techne.com
General: novus@novusbio.com

Products Related to NBP2-33078PE

NBP1-43319PE-0.5ml	Mouse IgG1 Kappa Isotype Control (P3.6.2.8.1) [PE]
NBP2-52190-0.05mg	Recombinant Human EpCAM/TROP1 His Protein
202-IL-010	IL-2 [Unconjugated]
960-EP-050	EpCAM/TROP1 [Unconjugated]

Limitations

This product is for research use only and is not approved for use in humans or in clinical diagnosis. Primary Antibodies are guaranteed for 1 year from date of receipt.

For more information on our 100% guarantee, please visit www.novusbio.com/guarantee

Earn gift cards/discounts by submitting a review: www.novusbio.com/reviews/submit/NBP2-33078PE

Earn gift cards/discounts by submitting a publication using this product:
www.novusbio.com/publications

