

Product Datasheet

EpCAM/TROP1 Antibody (VU-1D9) - Azide and BSA Free NBP2-33078

Unit Size: 0.1 mg

Store at -20 to -80C. Avoid freeze-thaw cycles.

www.novusbio.com



technical@novusbio.com

Publications: 1

Protocols, Publications, Related Products, Reviews, Research Tools and Images at:
www.novusbio.com/NBP2-33078

Updated 10/23/2024 v.20.1

Earn rewards for product
reviews and publications.

Submit a publication at www.novusbio.com/publications

Submit a review at www.novusbio.com/reviews/destination/NBP2-33078



NBP2-33078

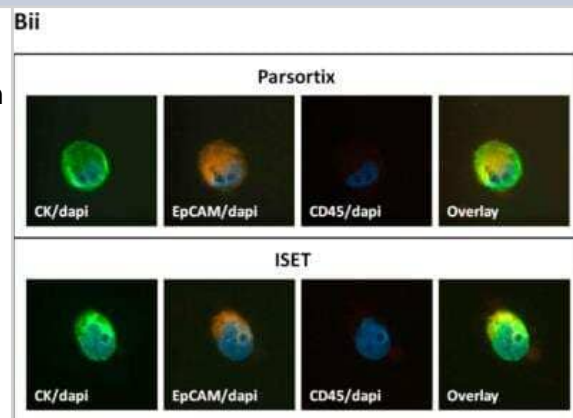
EpCAM/TROP1 Antibody (VU-1D9) - Azide and BSA Free

Product Information	
Unit Size	0.1 mg
Concentration	1.0 mg/ml
Storage	Store at -20 to -80C. Avoid freeze-thaw cycles.
Clonality	Monoclonal
Clone	VU-1D9
Preservative	No Preservative
Isotype	IgG1 Kappa
Purity	Protein A or G purified
Buffer	10 mM PBS
Product Description	
Description	1.0 mg/ml of antibody purified from Bioreactor Concentrate by Protein A or G prepared in 10 mM PBS WITHOUT BSA & azide. Antibody with azide - store at 2 to 8C. Antibody without azide - store at -20 to -80C.
Host	Mouse
Gene ID	4072
Gene Symbol	EPCAM
Species	Human, Ferret (Negative), Rat (Negative)
Reactivity Notes	Does not react with Rat and ferret.
Marker	Epithelial Marker
Specificity/Sensitivity	EGP40 is a 40-43kDa transmembrane epithelial glycoprotein, also identified as epithelial specific antigen (ESA), or epithelial cellular adhesion molecule (Ep-CAM). It is expressed on baso-lateral cell surface in most simple epithelia and a vast majority of carcinomas. This antibody has been used to distinguish adenocarcinoma from pleural mesothelioma and hepatocellular carcinoma. This antibody is also useful in distinguishing serous carcinomas of the ovary from mesothelioma.
Immunogen	Small cell lung carcinoma cells
Product Application Details	
Applications	Western Blot, Flow Cytometry, Immunocytochemistry/ Immunofluorescence, Immunohistochemistry, Immunohistochemistry-Paraffin
Recommended Dilutions	Western Blot 0.25-0.5ug/ml, Flow Cytometry 0.5-1ug/million cells, Immunohistochemistry, Immunocytochemistry/ Immunofluorescence 1-2ug/ml, Immunohistochemistry-Paraffin 0.5-1.0ug/ml
Application Notes	Immunohistochemistry (Formalin-fixed): 1-2ug/ml for 30 min at RT. Staining of formalin-fixed tissues requires heating tissue sections in 10mM Tris with 1mM EDTA, pH 9.0, for 45 min at 95C followed by cooling at RT for 20 minutes. Optimal dilution for a specific application should be determined.

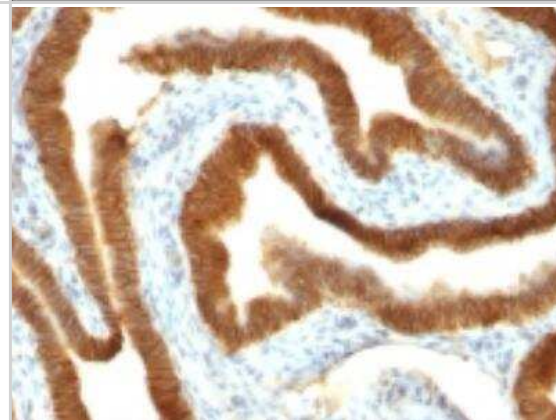


Images

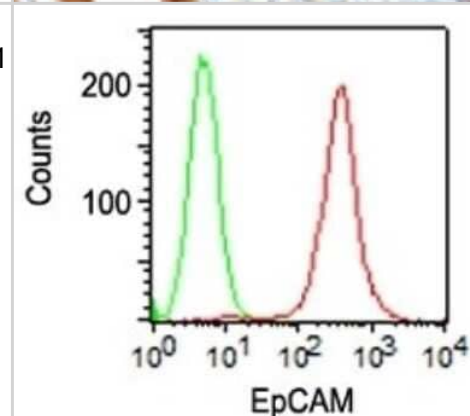
Immunocytochemistry/Immunofluorescence: EpCAM/TROP1 Antibody (VU-1D9) - Azide and BSA Free [NBP2-33078] - Representative staining of DAPI/CK/epithelial cell adhesion molecule EpCAM/TROP1 staining on spiked H1975 cells (ii) enriched by the two methods (400x). Image collected and cropped by CiteAb from the following publication (<https://pubmed.ncbi.nlm.nih.gov/32545559/>) licensed under a CC-BY license.



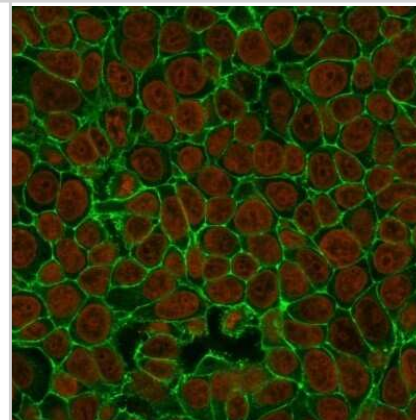
Immunohistochemistry-Paraffin: EpCAM/TROP1 Antibody (VU-1D9) - Azide and BSA Free [NBP2-33078] - Formalin-fixed, paraffin-embedded human Ovarian Carcinoma stained with Ep-CAM monoclonal antibody (VU-1D9).



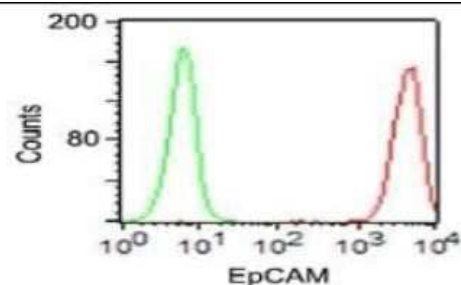
Flow Cytometry: EpCAM/TROP1 Antibody (VU-1D9) - Azide and BSA Free [NBP2-33078] - Flow Cytometric analysis of human EpCAM/TROP1 on HT29 cells. Black: cells alone; Green: Isotype Control; Red: PE-labeled EpCAM/TROP1 antibody (VU-1D9).



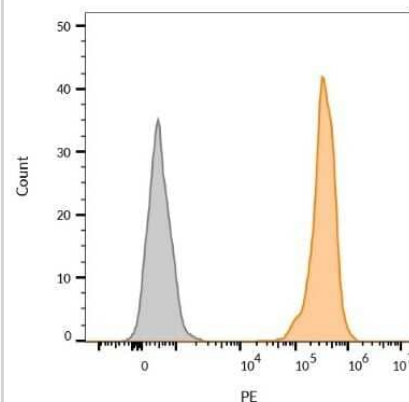
Immunocytochemistry/Immunofluorescence: EpCAM/TROP1 Antibody (VU-1D9) - Azide and BSA Free [NBP2-33078] - Immunofluorescence Analysis of MCF-7 cells EpCAM/TROP1 Antibody (VU-1D9) labeled with CF488 (green); NucSpot is used to label the nuclei (red).



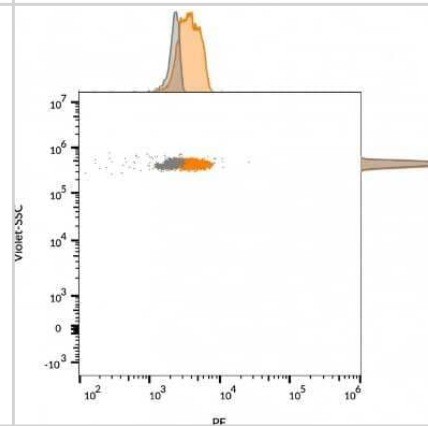
Flow Cytometry: EpCAM/TROP1 Antibody (VU-1D9) - Azide and BSA Free [NBP2-33078] - Surface staining of HT29 cells using Ep-CAM MAb (VU-1D9) (red) and isotype control antibody (green).



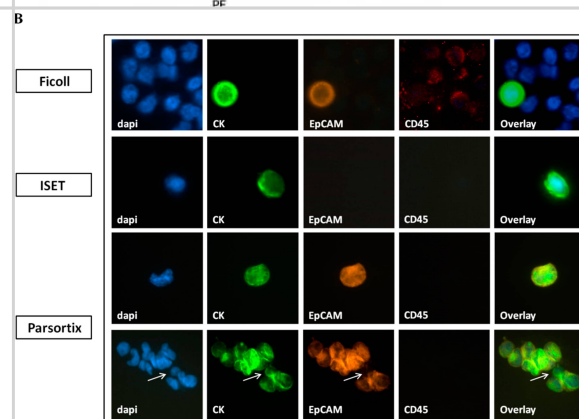
Flow Cytometry: EpCAM/TROP1 Antibody (VU-1D9) - Azide and BSA Free [NBP2-33078] - Flow Cytometric Analysis of PFA-fixed MCF-7 cells using EpCAM/TROP1 Mouse Monoclonal Antibody (VU-1D9) followed by goat anti-Mouse IgG-CF488 (Blue); Isotype Control (Red).



Flow Cytometry: EpCAM/TROP1 Antibody (VU-1D9) - Azide and BSA Free [NBP2-33078] - Flow cytometry of MCF-7 cells unstained (gray) or stained with CF555-labeled EpCAM/TROP1 monoclonal antibody (VU-1D9) (orange)



Immunocytochemistry/ Immunofluorescence: EpCAM/TROP1 Antibody (VU-1D9) - Azide and BSA Free [NBP2-33078] - Co-expression of epithelial markers CK & EpCAM on circulating tumor cells (CTCs) of patients with NSCLC: (A) Frequency of distinct co-expression phenotypes among CTCs identified using different enrichment approaches. Any method depicts the percentage of a specific phenotype among the total number of CTCs detected by all methods. (B) Representative images of CTCs enriched by different methods: All depicted cells co-express CK+/EpCAM+, except the ISET-enriched cell which is of the CK+/EpCAM- phenotype. A CTC cluster identified by Parsortix is also depicted, expressing CK+/EpCAM+ in all except one cell, which is of the CK+/EpCAM- phenotype (arrow). Aerial microscopy system, Genetix, New Milton, UK) (400 \times). Image collected & cropped by CiteAb from the following publication (<https://pubmed.ncbi.nlm.nih.gov/32545559>), licensed under a CC-BY license. Not internally tested by Novus Biologicals.



Publications

Mavroudis D, Sotiriou A I et al Optimization of the Enrichment of Circulating Tumor Cells for Downstream Phenotypic Analysis in Patients with Non-Small Cell Lung Cancer Treated with Anti-PD-1 Immunotherapy Cancers (Basel) 2020-06-18 [PMID: 32545559] (ICC/IF, ICC/IF, Human)

Details:

Citation using the Azide and BSA Free version of this antibody.





Novus Biologicals USA

10730 E. Briarwood Avenue
Centennial, CO 80112
USA
Phone: 303.730.1950
Toll Free: 1.888.506.6887
Fax: 303.730.1966
nb-customerservice@bio-techne.com

Bio-Techne Canada

21 Canmotor Ave
Toronto, ON M8Z 4E6
Canada
Phone: 905.827.6400
Toll Free: 855.668.8722
Fax: 905.827.6402
canada.inquires@bio-techne.com

Bio-Techne Ltd

19 Barton Lane
Abingdon Science Park
Abingdon, OX14 3NB, United Kingdom
Phone: (44) (0) 1235 529449
Free Phone: 0800 37 34 15
Fax: (44) (0) 1235 533420
info.EMEA@bio-techne.com

General Contact Information

www.novusbio.com
Technical Support: nb-technical@bio-techne.com
Orders: nb-customerservice@bio-techne.com
General: novus@novusbio.com

Products Related to NBP2-33078

HAF007	Goat anti-Mouse IgG Secondary Antibody [HRP]
NB720-B	Rabbit anti-Mouse IgG (H+L) Secondary Antibody [Biotin]
NBP1-43319-0.5mg	Mouse IgG1 Kappa Isotype Control (P3.6.2.8.1)
NBP2-52190-0.05mg	Recombinant Human EpCAM/TROP1 His Protein

Limitations

This product is for research use only and is not approved for use in humans or in clinical diagnosis. Primary Antibodies are guaranteed for 1 year from date of receipt.

For more information on our 100% guarantee, please visit www.novusbio.com/guarantee

Earn gift cards/discounts by submitting a review: www.novusbio.com/reviews/submit/NBP2-33078

Earn gift cards/discounts by submitting a publication using this product:
www.novusbio.com/publications

