

Product Datasheet

ErbB2/Her2 Antibody (HRB2/451) - Azide and BSA Free NBP2-33064

Unit Size: 0.1 mg

Store at -20 to -80C. Avoid freeze-thaw cycles.

www.novusbio.com



technical@novusbio.com

Protocols, Publications, Related Products, Reviews, Research Tools and Images at:
www.novusbio.com/NBP2-33064

Updated 10/23/2024 v.20.1

Earn rewards for product
reviews and publications.

Submit a publication at www.novusbio.com/publications

Submit a review at www.novusbio.com/reviews/destination/NBP2-33064



NBP2-33064

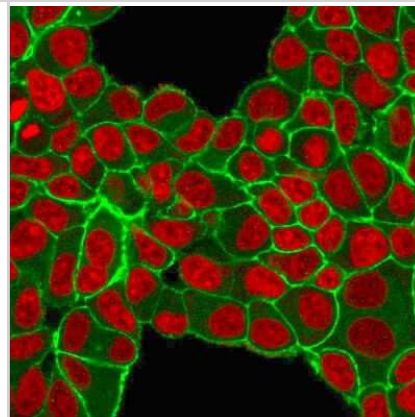
ErbB2/Her2 Antibody (HRB2/451) - Azide and BSA Free

Product Information	
Unit Size	0.1 mg
Concentration	1.0 mg/ml
Storage	Store at -20 to -80C. Avoid freeze-thaw cycles.
Clonality	Monoclonal
Clone	HRB2/451
Preservative	No Preservative
Isotype	IgG1 Kappa
Purity	Protein A or G purified
Buffer	10 mM PBS
Target Molecular Weight	185 kDa
Product Description	
Description	1.0 mg/ml of antibody purified from Bioreactor Concentrate by Protein A/G. Prepared in 10mM PBS WITHOUT BSA & azide. Also available at 200 ug/ml WITH BSA & azide (NBP2-29437). Antibody with azide - store at 2 to 8C. Antibody without azide - store at -20 to -80C.
Host	Mouse
Gene ID	2064
Gene Symbol	ERBB2
Species	Human
Specificity/Sensitivity	This monoclonal antibody is specific to c-erbB-2/HER-2 and shows minimal cross-reaction with other members of the family. C-erbB-2/HER-2 is a member of the EGFR family. Receptors of this family are located on the plasma membrane and consist of an extracellular ligand-binding domain that is connected to a large intracellular domain by a single transmembrane sequence. c-erbB-2/HER-2 protein is over-expressed in a variety of carcinomas especially those of breast and ovary.
Immunogen	Recombinant human ErbB2/Her2 protein (Uniprot: IDP04626)
Product Application Details	
Applications	ELISA, Flow Cytometry, Flow (Cell Surface), Immunocytochemistry/ Immunofluorescence, Immunohistochemistry, Immunohistochemistry-Paraffin, Protein Array, CyTOF-ready
Recommended Dilutions	Flow Cytometry 0.5-1ug/million cells, ELISA 1-5ug/ml for coating, Immunohistochemistry, Immunocytochemistry/ Immunofluorescence 0.5-1ug/ml, Immunohistochemistry-Paraffin, Protein Array, Flow (Cell Surface), CyTOF-ready
Application Notes	ELISA: For coating, order antibody without BSA). Optimal dilution for a specific application should be determined.

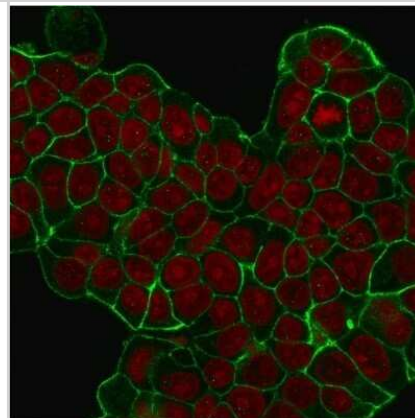


Images

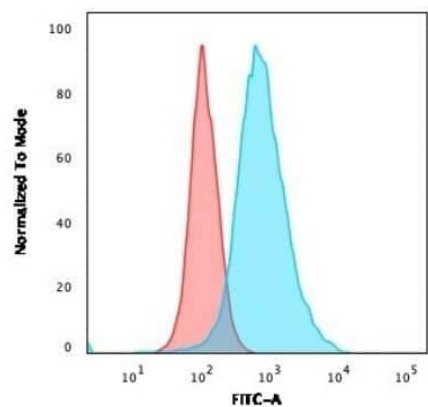
Immunocytochemistry/Immunofluorescence: ErbB2/Her2 Antibody (HRB2/451) - Azide and BSA Free [NBP2-33064] - Immunofluorescent staining of PFA-fixed MCF-7 cells with ErbB2/Her2 Monospecific Mouse Monoclonal Antibody (HRB2/451) followed by goat anti-Mouse IgG-CF488 (Green). Nuclei are stained with Reddot (Red).



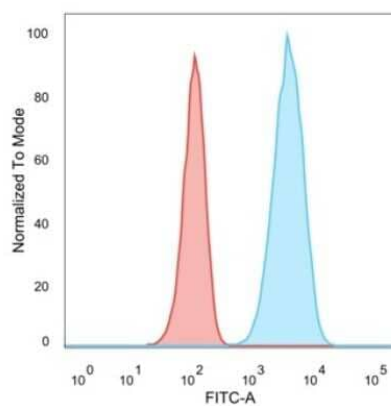
Immunocytochemistry/Immunofluorescence: ErbB2/Her2 Antibody (HRB2/451) - Azide and BSA Free [NBP2-33064] - Immunofluorescent staining of MCF-7 cells with ErbB2/Her2 Antibody (HRB2/451) followed by goat anti-Mouse IgG-CF488 (Green). Nuclei are stained with Red Dot (Red).



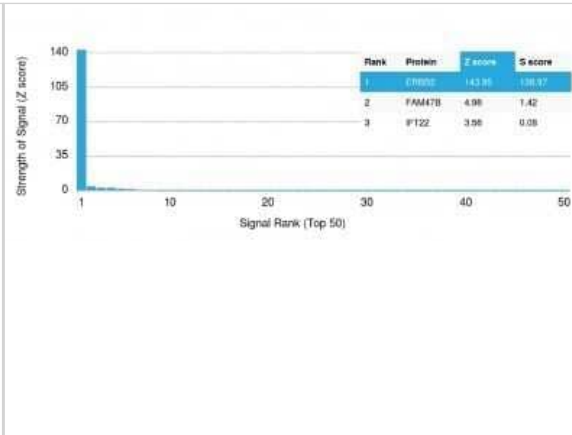
Flow Cytometry: ErbB2/Her2 Antibody (HRB2/451) - Azide and BSA Free [NBP2-33064] - Flow Cytometric Analysis of human trypsinized SK-BR3 cells. ErbB2/Her2 Antibody (HRB2/451) followed by Goat anti-Mouse IgG-CF488 (Blue); Isotype control (Red).



Flow Cytometry: ErbB2/Her2 Antibody (HRB2/451) - Azide and BSA Free [NBP2-33064] - Flow Cytometric Analysis of human trypsinized MCF-7 cells. ErbB2/Her2 Monospecific Mouse Monoclonal Antibody (HRB2/451) followed by goat anti-Mouse IgG-CF488 (Blue); Isotype control (Red).



Protein Array: ErbB2/Her2 Antibody (HRB2/451) - Azide and BSA Free [NBP2-33064] - Analysis of Protein Array containing more than 19,000 full-length human proteins using ErbB2/Her2 Antibody (HRB2/451) Z- and S- Score: The Z-score represents the strength of a signal that a monoclonal antibody (MAb) (in combination with a fluorescently-tagged anti-IgG secondary antibody) produces when binding to a particular protein on the HuProt(TM) array. Z-scores are described in units of standard deviations (SDs) above the mean value of all signals generated on that array. If targets on HuProt(TM) are arranged in descending order of the Z-score, the S-score is the difference (also in units of SDs) between the Z-score. S-score therefore represents the relative target specificity of a MAb to its intended target. A MAb is considered to specific to its intended target, if the MAb has an S-score of at least 2.5.





Novus Biologicals USA

10730 E. Briarwood Avenue
Centennial, CO 80112
USA
Phone: 303.730.1950
Toll Free: 1.888.506.6887
Fax: 303.730.1966
nb-customerservice@bio-techne.com

Bio-Techne Canada

21 Canmotor Ave
Toronto, ON M8Z 4E6
Canada
Phone: 905.827.6400
Toll Free: 855.668.8722
Fax: 905.827.6402
canada.inquires@bio-techne.com

Bio-Techne Ltd

19 Barton Lane
Abingdon Science Park
Abingdon, OX14 3NB, United Kingdom
Phone: (44) (0) 1235 529449
Free Phone: 0800 37 34 15
Fax: (44) (0) 1235 533420
info.EMEA@bio-techne.com

General Contact Information

www.novusbio.com
Technical Support: nb-technical@bio-techne.com
Orders: nb-customerservice@bio-techne.com
General: novus@novusbio.com

Products Related to NBP2-33064

HAF007	Goat anti-Mouse IgG Secondary Antibody [HRP]
NB720-B	Rabbit anti-Mouse IgG (H+L) Secondary Antibody [Biotin]
NBP1-43319-0.5mg	Mouse IgG1 Kappa Isotype Control (P3.6.2.8.1)
NBP2-29624PEP	ErbB2/Her2 Antibody Blocking Peptide

Limitations

This product is for research use only and is not approved for use in humans or in clinical diagnosis. Primary Antibodies are guaranteed for 1 year from date of receipt.

For more information on our 100% guarantee, please visit www.novusbio.com/guarantee

Earn gift cards/discounts by submitting a review: www.novusbio.com/reviews/submit/NBP2-33064

Earn gift cards/discounts by submitting a publication using this product:
www.novusbio.com/publications

