

# Product Datasheet

## EpCAM/TROP1 Antibody (VU-1D9) NBP2-33051

Unit Size: 0.1 mg

Store at 4C.

[www.novusbio.com](http://www.novusbio.com)



[technical@novusbio.com](mailto:technical@novusbio.com)

**Publications: 9**

Protocols, Publications, Related Products, Reviews, Research Tools and Images at:  
[www.novusbio.com/NBP2-33051](http://www.novusbio.com/NBP2-33051)

Updated 10/23/2024 v.20.1

Earn rewards for product  
reviews and publications.

Submit a publication at [www.novusbio.com/publications](http://www.novusbio.com/publications)

Submit a review at [www.novusbio.com/reviews/destination/NBP2-33051](http://www.novusbio.com/reviews/destination/NBP2-33051)



**NBP2-33051****EpCAM/TROP1 Antibody (VU-1D9)**

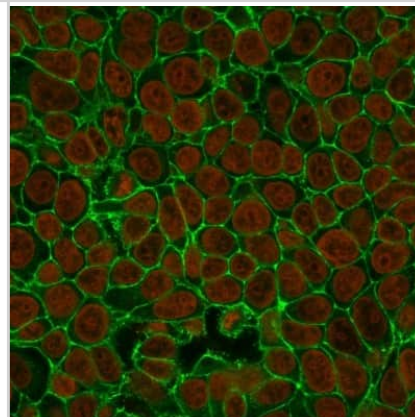
<b>Product Information</b>	
<b>Unit Size</b>	0.1 mg
<b>Concentration</b>	0.2 mg/ml
<b>Storage</b>	Store at 4C.
<b>Clonality</b>	Monoclonal
<b>Clone</b>	VU-1D9
<b>Preservative</b>	0.05% Sodium Azide
<b>Isotype</b>	IgG1 Kappa
<b>Purity</b>	Protein A or G purified
<b>Buffer</b>	10 mM PBS with 0.05% BSA

<b>Product Description</b>	
<b>Description</b>	200ug/ml of antibody purified from Bioreactor Concentrate by Protein A or G. Prepared in 10 mM PBS with 0.05% BSA & 0.05% azide. Also available WITHOUT BSA & azide at 1.0 mg/ml. (NBP2-33078)  Antibody with azide - store at 2 to 8C. Antibody without azide - store at -20 to -80 C.
<b>Host</b>	Mouse
<b>Gene ID</b>	4072
<b>Gene Symbol</b>	EPCAM
<b>Species</b>	Human, Ferret (Negative), Rat (Negative)
<b>Reactivity Notes</b>	Does not react with Rat and ferret.
<b>Marker</b>	Epithelial Marker
<b>Specificity/Sensitivity</b>	EGP40 is a 40-43kDa transmembrane epithelial glycoprotein, also identified as epithelial specific antigen (ESA), or epithelial cellular adhesion molecule (Ep-CAM). It is expressed on baso-lateral cell surface in most simple epithelia and a vast majority of carcinomas. This antibody has been used to distinguish adenocarcinoma from pleural mesothelioma and hepatocellular carcinoma. This antibody is also useful in distinguishing serous carcinomas of the ovary from mesothelioma.
<b>Immunogen</b>	Small cell lung carcinoma cells

<b>Product Application Details</b>	
<b>Applications</b>	Western Blot, Flow Cytometry, Immunocytochemistry/ Immunofluorescence, Immunohistochemistry, Immunohistochemistry-Paraffin
<b>Recommended Dilutions</b>	Western Blot 0.5-1ug/ml, Flow Cytometry 5ul/test/million cells or 5ul/100ul of whole blood, Immunohistochemistry, Immunocytochemistry/ Immunofluorescence 2-4 ug/ml, Immunohistochemistry-Paraffin 2-4 ug/ml
<b>Application Notes</b>	Immunohistochemistry (Formalin-fixed): 1-2ug/ml for 30 min at RT. Staining of formalin-fixed tissues requires heating tissue sections in 10mM Tris with 1mM EDTA, pH 9.0, for 45 min at 95C followed by cooling at RT for 20 minutes. Optimal dilution for a specific application should be determined. Flow Cytometry: 5ul per test per one million cells or 5ul per 100ul of whole blood

## Images

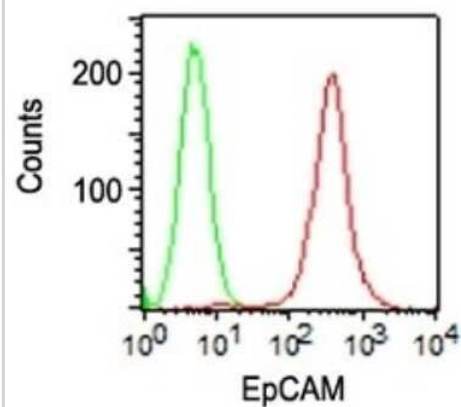
Immunocytochemistry/Immunofluorescence: EpCAM/TROP1 Antibody (VU-1D9) [NBP2-33051] - Immunofluorescence Analysis of MCF-7 cells  
EpCAM/TROP1 Antibody (VU-1D9) labeled with CF488 (green);  
NucSpot is used to label the nuclei (red).



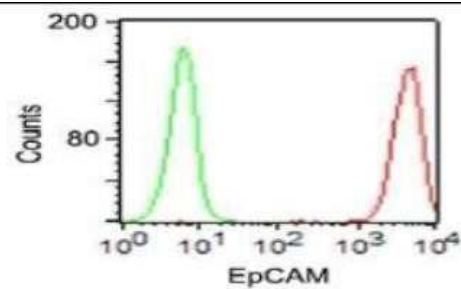
Immunohistochemistry-Paraffin: EpCAM/TROP1 Antibody (VU-1D9) [NBP2-33051] - Formalin-fixed, paraffin-embedded human Ovarian Carcinoma stained with Ep-CAM monoclonal antibody (VU-1D9).



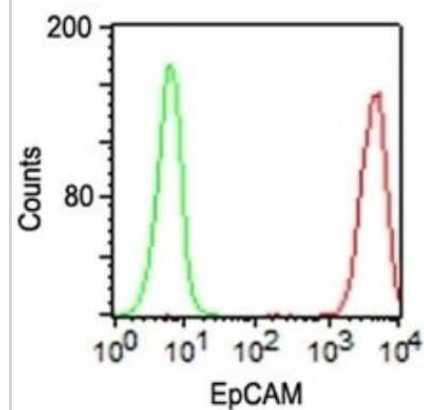
Flow Cytometry: EpCAM/TROP1 Antibody (VU-1D9) [NBP2-33051] -  
Flow Cytometric analysis of human EpCAM/TROP1 on HT29 cells.  
Black: cells alone; Green: Isotype Control; Red: PE-labeled  
EpCAM/TROP1 antibody (VU-1D9).



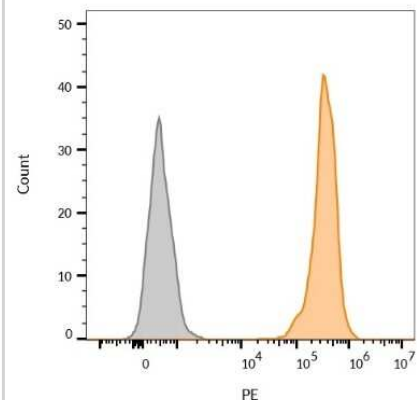
Flow Cytometry: EpCAM/TROP1 Antibody (VU-1D9) [NBP2-33051] -  
Analysis using Azide and BSA Free version of NBP2-33051. Surface  
staining of HT29 cells using Ep-CAM MAbs (VU-1D9) (red) and isotype  
control antibody (green).



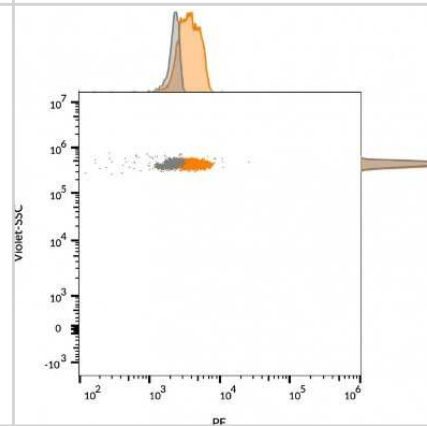
Flow Cytometry: EpCAM/TROP1 Antibody (VU-1D9) [NBP2-33051] - Surface staining of Human Colon HT29 cells using EpCAM/TROP1 Antibody (VU-1D9) (red) and isotype control antibody (green).



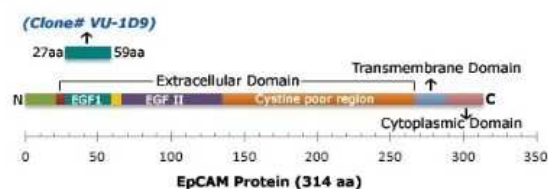
Flow Cytometry: EpCAM/TROP1 Antibody (VU-1D9) [NBP2-33051] - Flow Cytometric Analysis of PFA-fixed MCF-7 cells using EpCAM/TROP1 Mouse Monoclonal Antibody (VU-1D9) followed by goat anti-Mouse IgG-CF488 (Blue); Isotype Control (Red).



Flow Cytometry: EpCAM/TROP1 Antibody (VU-1D9) [NBP2-33051] - Flow cytometry of MCF-7 cells unstained (gray) or stained with CF555-labeled EpCAM/TROP1 monoclonal antibody (VU-1D9) (orange)



Flow Cytometry: EpCAM/TROP1 Antibody (VU-1D9) [NBP2-33051] - Flow cytometry of bead-bound exosomes derived from MCF-7 cells. Unstained exosomes (gray) or stained with CF555-labeled EpCAM/TROP1 monoclonal antibody (VU-1D9) (orange)



## Publications

Massard, C, Oulhen, M Et al. Phenotypic and genetic heterogeneity of tumor tissue and circulating tumor cells in patients with metastatic castration-resistant prostate cancer: A report from the PETRUS prospective study. *Oncotarget* Aug 23 2016 12:00AM [PMID: 27391263] (Flow, Rat)

Mavroudis D, Sotiriou A I et al Optimization of the Enrichment of Circulating Tumor Cells for Downstream Phenotypic Analysis in Patients with Non-Small Cell Lung Cancer Treated with Anti-PD-1 Immunotherapy Cancers (Basel) 2020-06-18 [PMID: 32545559] (ICC/IF, Human)

**Details:**

Citation using the Azide and BSA Free version of this antibody.

Wang SJ, Asthana S, van Zante A et al. Establishment and characterization of an oral tongue squamous cell carcinoma cell line from a never-smoking patient *Oral Oncol.* 2017-04-02 [PMID: 28559012] (WB, Human)

Paillet E, Faugoux V, Oulhen M et al Acquired Resistance Mutations to ALK Inhibitors Identified by Single Circulating Tumor Cell Sequencing in ALK-Rearranged Non-Small-Cell Lung Cancer. *Clin Cancer Res.* 2019-08-22 [PMID: 31439588] (ICC/IF, Human)

**Details:**

Citation using the Alexa Fluor 488 version of this antibody.

Brunner A, Prelog M, Verdorfer I et al. EpCAM is predominantly expressed in high grade and advanced stage urothelial carcinoma of the bladder *J Clin Pathol* 2008-03-01 [PMID: 17586680]

**Details:**

This reference used the PE version of NBP2-33051.

Winter MJ, Nagtegaal ID, van Krieken JH et al. The epithelial cell adhesion molecule (Ep-CAM) as a morphoregulatory molecule is a tool in surgical pathology *Am J Pathol* 2003-12-01 [PMID: 14633587]

**Details:**

This reference used the PE version of NBP2-33051.

Li G, Passebosc-Faure K, Lambert C et al. Flow cytometric analysis of antigen expression in malignant and normal renal cells *Anticancer Res* 2000-07-01 [PMID: 10953356]

**Details:**

This reference used the PE version of NBP2-33051.

Ogura E, Senzaki H, Yoshizawa K et al. Immunohistochemical localization of epithelial glycoprotein EGP-2 and carcinoembryonic antigen in normal colonic mucosa and colorectal tumors *Anticancer Res* 1998-09-01 [PMID: 9854475]

**Details:**

This reference used the PE version of NBP2-33051.

Tsubura A, Senzaki H, Sasaki M et al. Immunohistochemical demonstration of breast-derived and/or carcinoma-associated glycoproteins in normal skin appendages and their tumors *J Cutan Pathol* 1992-02-01 [PMID: 1556271]

**Details:**

This reference used the PE version of NBP2-33051.





### **Novus Biologicals USA**

10730 E. Briarwood Avenue  
Centennial, CO 80112  
USA  
Phone: 303.730.1950  
Toll Free: 1.888.506.6887  
Fax: 303.730.1966  
nb-customerservice@bio-techne.com

### **Bio-Techne Canada**

21 Canmotor Ave  
Toronto, ON M8Z 4E6  
Canada  
Phone: 905.827.6400  
Toll Free: 855.668.8722  
Fax: 905.827.6402  
canada.inquires@bio-techne.com

### **Bio-Techne Ltd**

19 Barton Lane  
Abingdon Science Park  
Abingdon, OX14 3NB, United Kingdom  
Phone: (44) (0) 1235 529449  
Free Phone: 0800 37 34 15  
Fax: (44) (0) 1235 533420  
info.EMEA@bio-techne.com

### **General Contact Information**

www.novusbio.com  
Technical Support: nb-technical@bio-techne.com  
Orders: nb-customerservice@bio-techne.com  
General: novus@novusbio.com

### **Products Related to NBP2-33051**

---

HAF007	Goat anti-Mouse IgG Secondary Antibody [HRP]
NB720-B	Rabbit anti-Mouse IgG (H+L) Secondary Antibody [Biotin]
NBP1-43319-0.5mg	Mouse IgG1 Kappa Isotype Control (P3.6.2.8.1)
NBP2-52190-0.05mg	Recombinant Human EpCAM/TROP1 His Protein

---

### **Limitations**

This product is for research use only and is not approved for use in humans or in clinical diagnosis. Primary Antibodies are guaranteed for 1 year from date of receipt.

For more information on our 100% guarantee, please visit [www.novusbio.com/guarantee](http://www.novusbio.com/guarantee)

Earn gift cards/discounts by submitting a review: [www.novusbio.com/reviews/submit/NBP2-33051](http://www.novusbio.com/reviews/submit/NBP2-33051)

Earn gift cards/discounts by submitting a publication using this product:  
[www.novusbio.com/publications](http://www.novusbio.com/publications)

