

Product Datasheet

Recombinant Human CRMP1 His Protein NBP2-32062-0.1mg

Unit Size: 0.1 mg

Store at 4C short term. Aliquot and store at -20C long term. Avoid freeze-thaw cycles.

www.novusbio.com



technical@novusbio.com

Publications: 1

Protocols, Publications, Related Products, Reviews, Research Tools and Images at:
www.novusbio.com/NBP2-32062

Updated 10/23/2024 v.20.1

Earn rewards for product
reviews and publications.

Submit a publication at www.novusbio.com/publications

Submit a review at www.novusbio.com/reviews/destination/NBP2-32062



NBP2-32062-0.1mg

Recombinant Human CRMP1 His Protein

Product Information	
Unit Size	0.1 mg
Concentration	1 mg/ml
Storage	Store at 4C short term. Aliquot and store at -20C long term. Avoid freeze-thaw cycles.
Preservative	No Preservative
Purity	>95%, by SDS-PAGE
Buffer	PBS (pH 7.4), 10% glycerol, 1 mM DTT, 0.2 mM PMSF
Target Molecular Weight	64.8 kDa

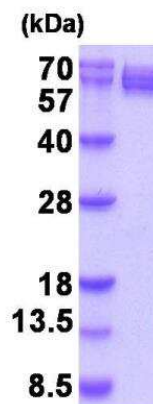
Product Description	
Description	<p>A recombinant protein with a N-Terminal His-tag and corresponding to the amino acids 1-572 of Human CRMP1</p> <p>Source: <i>E.coli</i></p> <p>Amino Acid Sequence: MGSSHHHHHH SGLVPRGSH MGSEFMSYQG KKSIPHITSD RLLIKGGRII NDDQSLYADV YLEDGLIKQI GENLIVPGGV KTIEANGRMV IPGGIDVNTY LQKPSQGMTA ADDFFQGTRA ALVGGTTMII DHVVPEPGSS LLTSFEKWHE AADTKSCCDY SLHVDITSWY DGVREELEVL VQDKGVNSFQ VYMAYKDVIYQ MSDSQLYEF TFLKGLGAVI LVHAENGDLI AQEQKRILEM GITGPEGHAL SRPEELEAEA VFRAITIAGR INCPVYITKV MSKSAADIIA LARKKGPLVF GEPIAASLGT DGTHYWSKNW AKAAAFVTSP PLSPDPTTPD YLTSLACGD LQVTGSGHCP YSTAQKAVGK DNFTLIPEGV NGIEERMTVV WDKAVATGKM DENQFVAVTS TNAAKIFNLY PRKGRIAVGS DADVVIWDPD KLKTITAKSH KSAVEYNIFE GMECHGSPLV VISQGKIVFE DGNINVNKGM GRFIPRKAFP EHLYQRVKIR NKVFLGQGV RGMVDGPVYE VPATPKYATP APSAKSSPSK HQPPPIRNLH QSNFSLSGAQ IDDNNPRRTG HRIVAPPGGR SNITSLG</p>
Gene ID	1400
Gene Symbol	CRMP1
Species	Human
Endotoxin Note	< 1.0 EU per 1ug of protein (determined by LAL method)

Product Application Details	
Applications	SDS-Page
Recommended Dilutions	SDS-Page



Images

SDS-Page: Recombinant Human CRMP1 Protein [NBP2-32062] - 15%
SDS-PAGE (3ug)



Publications

Edmiston E, Jones KL, Vu T et al. Identification of the Antigenic Epitopes of Maternal Autoantibodies in Autism Spectrum Disorders. *Brain Behav. Immun.* 2017-12-28 [PMID: 29289663] (Human)



Novus Biologicals USA

10730 E. Briarwood Avenue
Centennial, CO 80112
USA
Phone: 303.730.1950
Toll Free: 1.888.506.6887
Fax: 303.730.1966
nb-customerservice@bio-techne.com

Bio-Techne Canada

21 Canmotor Ave
Toronto, ON M8Z 4E6
Canada
Phone: 905.827.6400
Toll Free: 855.668.8722
Fax: 905.827.6402
canada.inquires@bio-techne.com

Bio-Techne Ltd

19 Barton Lane
Abingdon Science Park
Abingdon, OX14 3NB, United Kingdom
Phone: (44) (0) 1235 529449
Free Phone: 0800 37 34 15
Fax: (44) (0) 1235 533420
info.EMEA@bio-techne.com

General Contact Information

www.novusbio.com
Technical Support: nb-technical@bio-techne.com
Orders: nb-customerservice@bio-techne.com
General: novus@novusbio.com

Products Related to NBP2-32062-0.1mg

NBP2-61458-10ug	Recombinant Mouse CRMP1 His Protein
BC100-494	PINK1 Antibody - BSA Free
NBP1-76982	CRMP1 Antibody - BSA Free
NB100-56503	Cytochrome c Antibody (7H8.2C12) - BSA Free

Limitations

This product is for research use only and is not approved for use in humans or in clinical diagnosis. Peptides and proteins are guaranteed for 3 months from date of receipt.

For more information on our 100% guarantee, please visit www.novusbio.com/guarantee

Earn gift cards/discounts by submitting a review: www.novusbio.com/reviews/submit/NBP2-32062

Earn gift cards/discounts by submitting a publication using this product:
www.novusbio.com/publications

