

# Product Datasheet

## Parotid Tissue Slides (Mucoepidermoid Carcinoma)- Paraffin NBP2-30300

Unit Size: 5 Slides

Store at 4C. Do not freeze.

[www.novusbio.com](http://www.novusbio.com)



[technical@novusbio.com](mailto:technical@novusbio.com)

Protocols, Publications, Related Products, Reviews, Research Tools and Images at:  
[www.novusbio.com/NBP2-30300](http://www.novusbio.com/NBP2-30300)

Updated 10/23/2024 v.20.1

Earn rewards for product  
reviews and publications.

Submit a publication at [www.novusbio.com/publications](http://www.novusbio.com/publications)

Submit a review at [www.novusbio.com/reviews/destination/NBP2-30300](http://www.novusbio.com/reviews/destination/NBP2-30300)



**NBP2-30300****Parotid Tissue Slides (Mucoepidermoid Carcinoma)- Paraffin**

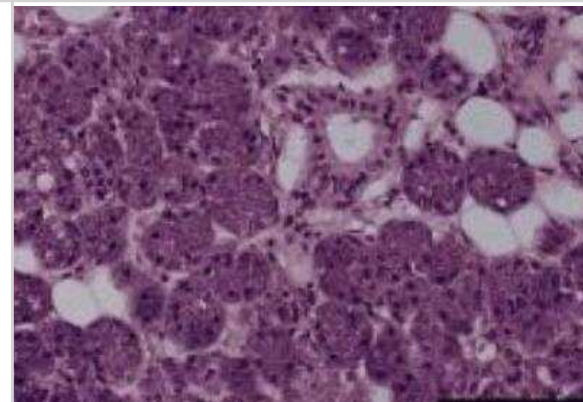
<b>Product Information</b>	
<b>Unit Size</b>	5 Slides
<b>Concentration</b>	Concentration is not relevant for this product. Please see the protocols for proper use of this product.
<b>Storage</b>	Store at 4C. Do not freeze.
<b>Reconstitution Instructions</b>	These slides are paraffin coated to prevent sample oxidization, it is recommended that slides are first de-paraffinized by baking at 60 degrees C for 1 hour in a vertical orientation prior to performing antigen retrieval procedures.

<b>Product Description</b>	
<b>Description</b>	Layout: 1X1 Diameter: 4 Thickness:Single Tissue Slides Pos:A01 SI No:1 Age:31 Sex:F Organ:Parotid gland Pathology:Mucoepidermoid Carcinoma Tissue Status:Tumor/Cancer Species:Human
<b>Species</b>	Human
<b>Lysate Type</b>	Tissue
<b>Lysate Tissue Condition</b>	Mucoepidermoid Carcinoma

<b>Product Application Details</b>	
<b>Applications</b>	Immunohistochemistry, Immunohistochemistry-Paraffin
<b>Recommended Dilutions</b>	Immunohistochemistry, Immunohistochemistry-Paraffin

**Images**

Hematoxylin & Eosin Stain: Parotid Tissue Slides (Mucoepidermoid Carcinoma) [NBP2-30300] - parotid gland, mucoepidermoid carcinoma  
Age/Sex : 31/F





### **Novus Biologicals USA**

10730 E. Briarwood Avenue  
Centennial, CO 80112  
USA  
Phone: 303.730.1950  
Toll Free: 1.888.506.6887  
Fax: 303.730.1966  
nb-customerservice@bio-techne.com

### **Bio-Techne Canada**

21 Canmotor Ave  
Toronto, ON M8Z 4E6  
Canada  
Phone: 905.827.6400  
Toll Free: 855.668.8722  
Fax: 905.827.6402  
canada.inquires@bio-techne.com

### **Bio-Techne Ltd**

19 Barton Lane  
Abingdon Science Park  
Abingdon, OX14 3NB, United Kingdom  
Phone: (44) (0) 1235 529449  
Free Phone: 0800 37 34 15  
Fax: (44) (0) 1235 533420  
info.EMEA@bio-techne.com

### **General Contact Information**

www.novusbio.com  
Technical Support: nb-technical@bio-techne.com  
Orders: nb-customerservice@bio-techne.com  
General: novus@novusbio.com

### **Products Related to NBP2-30300**

---

NB820-59445	Human Parotid Whole Tissue Lysate (Adult Whole Tumor)
-------------	-------------------------------------------------------

---

### **Limitations**

This product is for research use only and is not approved for use in humans or in clinical diagnosis. Slides are guaranteed for 3 months from date of receipt.

For more information on our 100% guarantee, please visit [www.novusbio.com/guarantee](http://www.novusbio.com/guarantee)

Earn gift cards/discounts by submitting a review: [www.novusbio.com/reviews/submit/NBP2-30300](http://www.novusbio.com/reviews/submit/NBP2-30300)

Earn gift cards/discounts by submitting a publication using this product:  
[www.novusbio.com/publications](http://www.novusbio.com/publications)

