

# Product Datasheet

## SLC28A3 Antibody - BSA Free

### NBP2-29615

Unit Size: 0.1 mg

Store at 4C short term. Aliquot and store at -20C long term. Avoid freeze-thaw cycles.

[www.novusbio.com](http://www.novusbio.com)



[technical@novusbio.com](mailto:technical@novusbio.com)

#### Publications: 1

Protocols, Publications, Related Products, Reviews, Research Tools and Images at:  
[www.novusbio.com/NBP2-29615](http://www.novusbio.com/NBP2-29615)

Updated 2/23/2025 v.20.1

Earn rewards for product  
reviews and publications.

Submit a publication at [www.novusbio.com/publications](http://www.novusbio.com/publications)

Submit a review at [www.novusbio.com/reviews/destination/NBP2-29615](http://www.novusbio.com/reviews/destination/NBP2-29615)



**NBP2-29615**

SLC28A3 Antibody - BSA Free

Product Information	
Unit Size	0.1 mg
Concentration	1.0 mg/ml
Storage	Store at 4C short term. Aliquot and store at -20C long term. Avoid freeze-thaw cycles.
Clonality	Polyclonal
Preservative	0.05% Sodium Azide
Isotype	IgG
Purity	Protein A purified
Buffer	PBS

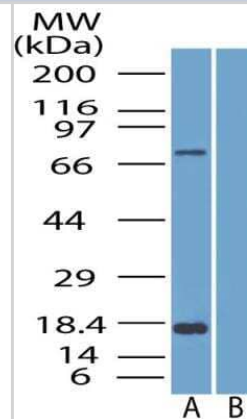
Product Description	
Host	Rabbit
Gene ID	64078
Gene Symbol	SLC28A3
Species	Human
Immunogen	A synthetic peptide made to an internal portion of the human SLC28A3 protein (between residues 30-100) [NCBI NP_071410.1]

Product Application Details	
Applications	Western Blot, Immunohistochemistry, Immunohistochemistry-Paraffin
Recommended Dilutions	Western Blot 4 ug/ml, Immunohistochemistry 5 ug/ml, Immunohistochemistry-Paraffin 5 ug/ml
Application Notes	SLC28A3 is a multipass membrane protein and its canonical form (Isoform 1) is 691AA long with predicted molecular weight of 76.9 kDa. This SLC28A3 antibody is not expected to detect Isoform 2 of SLC28A3, and in our testing with WB assay, this antibody detected the target band (~75kDa) with one additional/uncharacterized band (~17 kda). Because the immunogen sequence of this SLC28A3 antibody falls within the first cytoplasmic domain of SLC28A3 (see Uniprot# Q9HAS3; aa1-100, the largest cytoplasmic domain of this protein), the expected staining pattern with this antibody would be cytoplasmic in immunostaining assays.

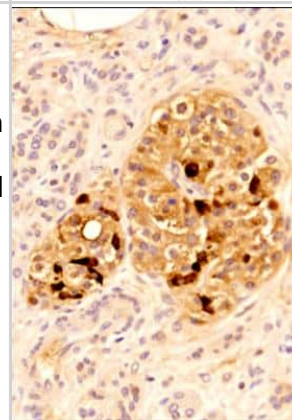


## Images

Western Blot: SLC28A3 Antibody [NBP2-29615] - Western blot analysis of SLC28A3 in A. PC3 cell lysate B. PC3 lysate with blocking peptide.



Immunohistochemistry-Paraffin: SLC28A3 Antibody [NBP2-29615] - IHC analysis of a formalin fixed and paraffin embedded tissue section of human pancreas using SLC28A3 antibody at 1:200 dilution. The antibody generated an expected cytoplasmic staining and the expression was mainly seen in Islet of Langerhans while the pancreatic acinar cells showed very weak staining. Inside the Islet of Langerhans, the alpha and beta cells showed moderate to high staining while the delta cells depicted very intense staining for SLC28A3 protein.



## Publications

Chen YH, Chen YC, Lin CC et al. Synergistic Anticancer Effects of Gemcitabine with Pitavastatin on Pancreatic Cancer Cell Line MIA PaCa-2 in vitro and in vivo Cancer Manag Res 2020-06-17 [PMID: 32606957]



### **Novus Biologicals USA**

10730 E. Briarwood Avenue  
Centennial, CO 80112  
USA  
Phone: 303.730.1950  
Toll Free: 1.888.506.6887  
Fax: 303.730.1966  
nb-customerservice@bio-techne.com

### **Bio-Techne Canada**

21 Canmotor Ave  
Toronto, ON M8Z 4E6  
Canada  
Phone: 905.827.6400  
Toll Free: 855.668.8722  
Fax: 905.827.6402  
canada.inquires@bio-techne.com

### **Bio-Techne Ltd**

19 Barton Lane  
Abingdon Science Park  
Abingdon, OX14 3NB, United Kingdom  
Phone: (44) (0) 1235 529449  
Free Phone: 0800 37 34 15  
Fax: (44) (0) 1235 533420  
info.EMEA@bio-techne.com

### **General Contact Information**

www.novusbio.com  
Technical Support: nb-technical@bio-techne.com  
Orders: nb-customerservice@bio-techne.com  
General: novus@novusbio.com

### **Products Related to NBP2-29615**

---

HAF008	Goat anti-Rabbit IgG Secondary Antibody [HRP]
NB7160	Goat anti-Rabbit IgG (H+L) Secondary Antibody [HRP]
NBP2-24891	Rabbit IgG Isotype Control
NBP2-29615PEP	SLC28A3 Antibody Blocking Peptide

---

### **Limitations**

This product is for research use only and is not approved for use in humans or in clinical diagnosis. Primary Antibodies are guaranteed for 1 year from date of receipt.

For more information on our 100% guarantee, please visit [www.novusbio.com/guarantee](http://www.novusbio.com/guarantee)

Earn gift cards/discounts by submitting a review: [www.novusbio.com/reviews/submit/NBP2-29615](http://www.novusbio.com/reviews/submit/NBP2-29615)

Earn gift cards/discounts by submitting a publication using this product:  
[www.novusbio.com/publications](http://www.novusbio.com/publications)

