

# Product Datasheet

## CD3 epsilon Antibody NBP2-29472

Unit Size: 0.1 mg

Store at 4C.

[www.novusbio.com](http://www.novusbio.com)



[technical@novusbio.com](mailto:technical@novusbio.com)

### Publications: 1

Protocols, Publications, Related Products, Reviews, Research Tools and Images at:  
[www.novusbio.com/NBP2-29472](http://www.novusbio.com/NBP2-29472)

Updated 10/23/2024 v.20.1

Earn rewards for product  
reviews and publications.

Submit a publication at [www.novusbio.com/publications](http://www.novusbio.com/publications)

Submit a review at [www.novusbio.com/reviews/destination/NBP2-29472](http://www.novusbio.com/reviews/destination/NBP2-29472)



**NBP2-29472**

## CD3 epsilon Antibody

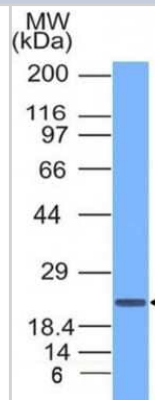
Product Information	
Unit Size	0.1 mg
Concentration	0.2 mg/ml
Storage	Store at 4C.
Clonality	Polyclonal
Preservative	0.05% Sodium Azide
Isotype	IgG
Purity	Protein A purified
Buffer	10 mM PBS with 0.05% BSA
Target Molecular Weight	20 kDa

Product Description	
Description	200ug/ml of antibody purified from rabbit anti-serum by Protein A. Prepared in 10 mM PBS with 0.05% BSA & 0.05% azide. Also available WITHOUT BSA at 1.0 mg/ml. (NBP2-33116)  Antibody with azide - store at 2 to 8C. Antibody without azide - store at -20 to -80C.
Host	Rabbit
Gene ID	916
Gene Symbol	CD3E
Species	Human
Reactivity Notes	Predicted to react with Ape, Orangutan, Gibbon, Chimpanzee, Monkey, Elephant, Equine, Bovine, Sheep, Porcine, Canine, Feline, Rabbit, Rat, Mouse, Guinea Pig, Hamster, Opossum, Frog, Chicken.
Marker	T-Cell Marker
Specificity/Sensitivity	Recognizes the epsilon-chain of CD3, which consists of five different polypeptide chains (designated as gamma, delta, epsilon, zeta, and eta) with MW ranging from 16-28kDa. The CD3 complex is closely associated at the lymphocyte cell surface with the T cell antigen receptor (TCR). Reportedly, CD3 complex is involved in signal transduction to the T cell interior following antigen recognition. The CD3 antigen is first detectable in early thymocytes and probably represents one of the earliest signs of commitment to the T cell lineage. In cortical thymocytes, CD3 is predominantly intra-cytoplasmic. However, in medullary thymocytes, it appears on the T cell surface. CD3 antigen is a highly specific marker for T cells, and is present in majority of T cell neoplasms.
Immunogen	A synthetic peptide aa156-168 (ERPPPVPNPDYEP) from human CD3 epsilon (Uniprot: P07766)

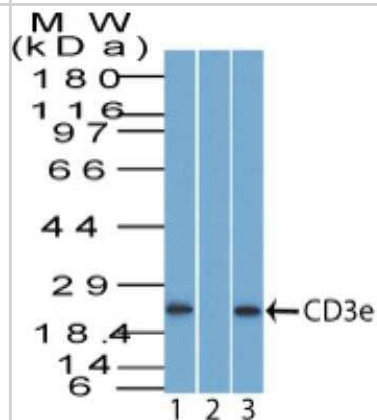
Product Application Details	
Applications	Western Blot, Immunohistochemistry
Recommended Dilutions	Western Blot 1-2 ug/ml, Immunohistochemistry
Application Notes	Western Blot: 1-2ug/ml for 60 minutes at RT. Use in Immunohistochemistry reported in scientific literature (PMID: 29867591). Optimal dilution for a specific application should be determined.

## Images

Western Blot: CD3 epsilon Antibody [NBP2-29472] - Western Blot of Jurkat cell lysate using CD3 epsilon Antibody



Western Blot: CD3 epsilon Antibody [NBP2-29472] - Analysis of CD3e in human Jurkat lysate in the 1) absence and 2) presence of immunizing peptide, 3) on mouse thymus tissue lysate probed with 2 ug/ml of CD3e antibody. Goat anti-rabbit Ig HRP secondary antibody and PicoTect ECL substrate solution were used for this test.



## Publications

Moes Arthur D, Severs David, Verdonk Koen et al. Mycophenolate Mofetil Attenuates DOCA-Salt Hypertension: Effects on Vascular Tone. *Frontiers in Physiology* 2018-01-01 [PMID: 29867591] (IF/IHC, Rat)



### **Novus Biologicals USA**

10730 E. Briarwood Avenue  
Centennial, CO 80112  
USA  
Phone: 303.730.1950  
Toll Free: 1.888.506.6887  
Fax: 303.730.1966  
nb-customerservice@bio-techne.com

### **Bio-Techne Canada**

21 Canmotor Ave  
Toronto, ON M8Z 4E6  
Canada  
Phone: 905.827.6400  
Toll Free: 855.668.8722  
Fax: 905.827.6402  
canada.inquires@bio-techne.com

### **Bio-Techne Ltd**

19 Barton Lane  
Abingdon Science Park  
Abingdon, OX14 3NB, United Kingdom  
Phone: (44) (0) 1235 529449  
Free Phone: 0800 37 34 15  
Fax: (44) (0) 1235 533420  
info.EMEA@bio-techne.com

### **General Contact Information**

www.novusbio.com  
Technical Support: nb-technical@bio-techne.com  
Orders: nb-customerservice@bio-techne.com  
General: novus@novusbio.com

### **Products Related to NBP2-29472**

---

HAF008	Goat anti-Rabbit IgG Secondary Antibody [HRP]
NB7160	Goat anti-Rabbit IgG (H+L) Secondary Antibody [HRP]
NBP2-24891	Rabbit IgG Isotype Control
NBP2-22752	Recombinant Human CD3 epsilon His Protein

---

### **Limitations**

This product is for research use only and is not approved for use in humans or in clinical diagnosis. Primary Antibodies are guaranteed for 1 year from date of receipt.

For more information on our 100% guarantee, please visit [www.novusbio.com/guarantee](http://www.novusbio.com/guarantee)

Earn gift cards/discounts by submitting a review: [www.novusbio.com/reviews/submit/NBP2-29472](http://www.novusbio.com/reviews/submit/NBP2-29472)

Earn gift cards/discounts by submitting a publication using this product:  
[www.novusbio.com/publications](http://www.novusbio.com/publications)

