

# Product Datasheet

## **FIZZ1/RELM alpha Antibody - BSA Free NBP2-29355**

Unit Size: 0.1 mg

Store at 4C short term. Aliquot and store at -20C long term. Avoid freeze-thaw cycles.

[www.novusbio.com](http://www.novusbio.com)



[technical@novusbio.com](mailto:technical@novusbio.com)

**Reviews: 3 Publications: 1**

Protocols, Publications, Related Products, Reviews, Research Tools and Images at:  
[www.novusbio.com/NBP2-29355](http://www.novusbio.com/NBP2-29355)

Updated 9/9/2025 v.20.1

**Earn rewards for product  
reviews and publications.**

Submit a publication at [www.novusbio.com/publications](http://www.novusbio.com/publications)

Submit a review at [www.novusbio.com/reviews/destination/NBP2-29355](http://www.novusbio.com/reviews/destination/NBP2-29355)



**NBP2-29355**

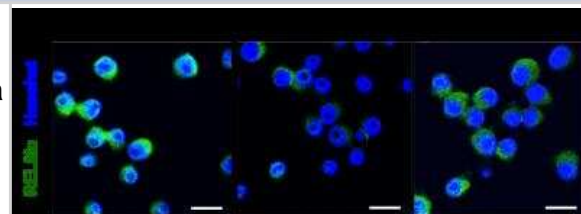
FIZZ1/RELM alpha Antibody - BSA Free

Product Information	
Unit Size	0.1 mg
Concentration	1 mg/ml
Storage	Store at 4C short term. Aliquot and store at -20C long term. Avoid freeze-thaw cycles.
Clonality	Polyclonal
Preservative	0.02% Sodium Azide
Isotype	IgG
Purity	Immunogen affinity purified
Buffer	PBS
Target Molecular Weight	11.9 kDa
Product Description	
Description	Novus Biologicals Rabbit FIZZ1/RELM alpha Antibody - BSA Free (NBP2-29355) is a polyclonal antibody validated for use in IHC, WB, Flow and ICC/IF. Anti-FIZZ1/RELM alpha Antibody: Cited in 1 publication. All Novus Biologicals antibodies are covered by our 100% guarantee.
Host	Rabbit
Gene ID	57262
Gene Symbol	RETNLA
Species	Mouse
Reactivity Notes	Mouse
Immunogen	A synthetic peptide made to amino acids sequence within the residues 10-50 of the mouse RELM alpha protein.
Product Application Details	
Applications	Western Blot, Immunohistochemistry-Paraffin, Flow Cytometry, Immunocytochemistry/ Immunofluorescence, Immunohistochemistry, Immunohistochemistry-Frozen
Recommended Dilutions	Western Blot 1:500 -1:1000, Flow Cytometry 1:10-1:1000, Immunohistochemistry 1:10-1:500, Immunocytochemistry/ Immunofluorescence 1:10-1:500, Immunohistochemistry-Paraffin 1:10-1:500, Immunohistochemistry-Frozen 1:10-1:500
Application Notes	In Western blot this RELM antibody detects a specific target band between 10-15 kDa position (monomer form) under complete reducing conditions. Larger bands representing dimers or multimers may also be seen if WB run under non-reducing conditions. The observed molecular weight of the protein may vary from the listed predicted molecular weight due to post translational modifications, post translation cleavages, relative charges, and other experimental factors. ICC/IF and WB reported in a customer review.

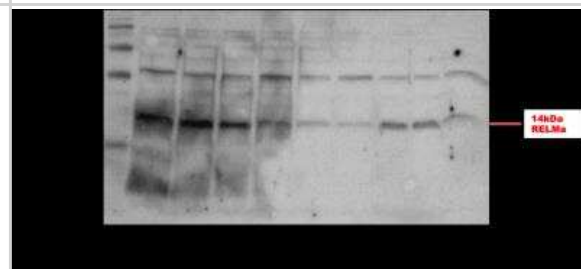


## Images

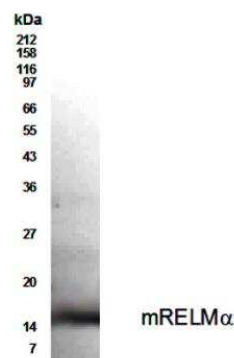
Immunocytochemistry/Immunofluorescence: FIZZ1/RELM alpha Antibody [NBP2-29355] - Staining in Mouse BV2 microglia cells, FIZZ1/RELM staining in green and nuclear staining in blue. Image from a verified customer review. Cell treatment with DMSO, DMSO +lipopolysaccharide, DMSO+SP600125 (a JNK inhibitor).



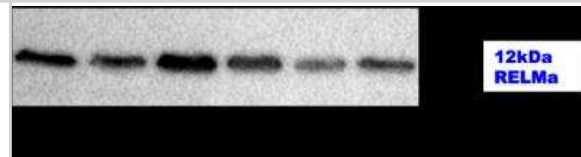
Western Blot: FIZZ1/RELM alpha Antibody [NBP2-29355] - Analysis in mouse BV2 microglia cells. Studing the effects of lysophosphatidic acid (LPA) on microglia polarization state. Dilution at 1:500. Image from a verified customer review.



Western Blot: RELM alpha Antibody [NBP2-29355] - WB detection of secreted Mouse Resistin-Like Molecule alpha (RELM alpha) from media of transfected 293T cells with #NBP2-29355 antibody used at a dilution of 1:500



Western Blot: FIZZ1/RELM alpha Antibody [NBP2-29355] - Functional analysis mouse BV2 cell lysate. Image from a verified customer review.



## Publications

Lin L, Hu K. Tissue-type plasminogen activator modulates macrophage M2 to M1 phenotypic change through annexin A2-mediated NF-kappa B pathway Oncotarget 2017-10-20 [PMID: 29152144] (WB, Mouse)



### **Novus Biologicals USA**

10730 E. Briarwood Avenue  
Centennial, CO 80112  
USA  
Phone: 303.730.1950  
Toll Free: 1.888.506.6887  
Fax: 303.730.1966  
nb-customerservice@bio-techne.com

### **Bio-Techne Canada**

21 Canmotor Ave  
Toronto, ON M8Z 4E6  
Canada  
Phone: 905.827.6400  
Toll Free: 855.668.8722  
Fax: 905.827.6402  
canada.inquires@bio-techne.com

### **Bio-Techne Ltd**

19 Barton Lane  
Abingdon Science Park  
Abingdon, OX14 3NB, United Kingdom  
Phone: (44) (0) 1235 529449  
Free Phone: 0800 37 34 15  
Fax: (44) (0) 1235 533420  
info.EMEA@bio-techne.com

### **General Contact Information**

www.novusbio.com  
Technical Support: nb-technical@bio-techne.com  
Orders: nb-customerservice@bio-techne.com  
General: novus@novusbio.com

### **Products Related to NBP2-29355**

---

HAF008	Goat anti-Rabbit IgG Secondary Antibody [HRP]
NB7160	Goat anti-Rabbit IgG (H+L) Secondary Antibody [HRP]
NBP2-24891	Rabbit IgG Isotype Control
210-TA-005	TNF-alpha [Unconjugated]

---

### **Limitations**

This product is for research use only and is not approved for use in humans or in clinical diagnosis. Primary Antibodies are guaranteed for 1 year from date of receipt.

For more information on our 100% guarantee, please visit [www.novusbio.com/guarantee](http://www.novusbio.com/guarantee)

Earn gift cards/discounts by submitting a review: [www.novusbio.com/reviews/submit/NBP2-29355](http://www.novusbio.com/reviews/submit/NBP2-29355)

Earn gift cards/discounts by submitting a publication using this product:  
[www.novusbio.com/publications](http://www.novusbio.com/publications)

