

Product Datasheet

SDH Assembly Factor 1 Antibody NBP2-29339

Unit Size: 0.1 mg

Store at -20C. Avoid freeze-thaw cycles.

www.novusbio.com



technical@novusbio.com

Publications: 1

Protocols, Publications, Related Products, Reviews, Research Tools and Images at:
www.novusbio.com/NBP2-29339

Updated 9/9/2025 v.20.1

Earn rewards for product
reviews and publications.

Submit a publication at www.novusbio.com/publications

Submit a review at www.novusbio.com/reviews/destination/NBP2-29339



NBP2-29339**SDH Assembly Factor 1 Antibody****Product Information**

Unit Size	0.1 mg
Concentration	0.5 mg/ml
Storage	Store at -20C. Avoid freeze-thaw cycles.
Clonality	Polyclonal
Preservative	0.02% Sodium Azide
Isotype	IgG
Purity	Immunogen affinity purified
Buffer	Tris saline (20 mM Tris pH 7.3, 150 mM NaCl), 0.5% BSA

Product Description

Description	Novus Biologicals Goat SDH Assembly Factor 1 Antibody (NBP2-29339) is a polyclonal antibody validated for use in IHC, WB and ELISA. Anti-SDH Assembly Factor 1 Antibody: Cited in 1 publication. All Novus Biologicals antibodies are covered by our 100% guarantee.
Host	Goat
Gene ID	644096
Gene Symbol	SDHAF1
Species	Human
Immunogen	Peptide with sequence C-HDSTGAPETRPDGR corresponding to C-Terminus according to NP_001036096.1.

Product Application Details

Applications	Western Blot, Immunohistochemistry-Paraffin, Peptide ELISA
Recommended Dilutions	Western Blot 0.3 - 1 ug/mL, Immunohistochemistry-Paraffin 5 ug/mL, Peptide ELISA Detection limit 1:16000

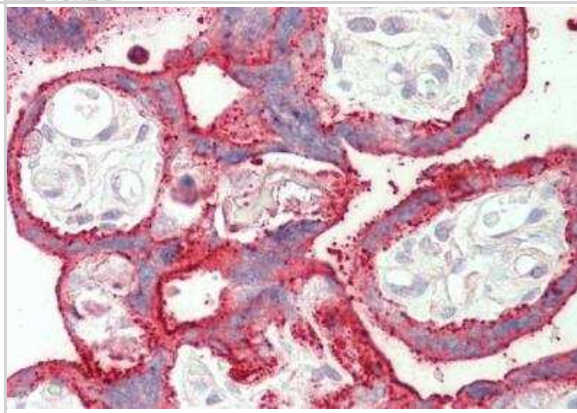


Images

Western Blot: SDH Assembly Factor 1 Antibody [NBP2-29339] - Staining of Human Cerebellum lysate with antibody at 0.3 ug/mL (35 ug protein in RIPA buffer). Primary incubation was 1 hour. Detected by chemiluminescence.



Immunohistochemistry-Paraffin: SDH Assembly Factor 1 Antibody [NBP2-29339] - Staining of paraffin embedded Human Placenta with antibody at 5 ug/mL. Steamed antigen retrieval with citrate buffer pH 6, AP-staining.



Publications

Ghezzi D, Goffrini P, Uziel G et al. SDHAF1, encoding a LYR complex-II specific assembly factor, is mutated in SDH-defective infantile leukoencephalopathy. Nat Genet 2009-05-24 [PMID: 19465911]



Novus Biologicals USA

10730 E. Briarwood Avenue
Centennial, CO 80112
USA
Phone: 303.730.1950
Toll Free: 1.888.506.6887
Fax: 303.730.1966
nb-customerservice@bio-techne.com

Bio-Techne Canada

21 Canmotor Ave
Toronto, ON M8Z 4E6
Canada
Phone: 905.827.6400
Toll Free: 855.668.8722
Fax: 905.827.6402
canada.inquires@bio-techne.com

Bio-Techne Ltd

19 Barton Lane
Abingdon Science Park
Abingdon, OX14 3NB, United Kingdom
Phone: (44) (0) 1235 529449
Free Phone: 0800 37 34 15
Fax: (44) (0) 1235 533420
info.EMEA@bio-techne.com

General Contact Information

www.novusbio.com
Technical Support: nb-technical@bio-techne.com
Orders: nb-customerservice@bio-techne.com
General: novus@novusbio.com

Products Related to NBP2-29339

HAF017	Rabbit anti-Goat IgG Secondary Antibody [HRP (Horseradish Peroxidase)]
HAF109	Donkey anti-Goat IgG Secondary Antibody [HRP (Horseradish Peroxidase)]
NB410-28088-1mg	Goat IgG Isotype Control
NBP2-51888-0.02mg	Recombinant Human SDH Assembly Factor 1 His Protein

Limitations

This product is for research use only and is not approved for use in humans or in clinical diagnosis. Primary Antibodies are guaranteed for 1 year from date of receipt.

For more information on our 100% guarantee, please visit www.novusbio.com/guarantee

Earn gift cards/discounts by submitting a review: www.novusbio.com/reviews/submit/NBP2-29339

Earn gift cards/discounts by submitting a publication using this product:
www.novusbio.com/publications



