

Product Datasheet

TET2 Antibody NBP2-27465

Unit Size: 0.1 mg

Store at -20C. Avoid freeze-thaw cycles.

www.novusbio.com



technical@novusbio.com

Publications: 1

Protocols, Publications, Related Products, Reviews, Research Tools and Images at:
www.novusbio.com/NBP2-27465

Updated 10/23/2024 v.20.1

Earn rewards for product
reviews and publications.

Submit a publication at www.novusbio.com/publications

Submit a review at www.novusbio.com/reviews/destination/NBP2-27465



NBP2-27465**TET2 Antibody**

| Product Information | |
|----------------------------|--|
| Unit Size | 0.1 mg |
| Concentration | 0.5 mg/ml |
| Storage | Store at -20C. Avoid freeze-thaw cycles. |
| Clonality | Polyclonal |
| Preservative | 0.02% Sodium Azide |
| Isotype | IgG |
| Purity | Immunogen affinity purified |
| Buffer | Tris saline (20 mM Tris pH 7.3, 150 mM NaCl), 0.5% BSA |

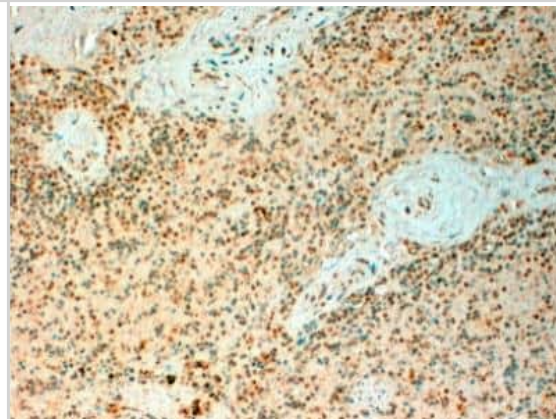
| Product Description | |
|--------------------------------|--|
| Host | Goat |
| Gene ID | 54790 |
| Gene Symbol | TET2 |
| Species | Human |
| Specificity/Sensitivity | This antibody is expected to recognize both reported isoforms (NP_001120680.1; NP_060098.3). |
| Immunogen | Peptide with sequence C-PHPQSNNDQQREGSF corresponding to internal region according to NP_001120680.1, NP_060098.3. |

| Product Application Details | |
|------------------------------------|---|
| Applications | Flow Cytometry, Immunohistochemistry, Immunohistochemistry-Paraffin, Peptide ELISA |
| Recommended Dilutions | Flow Cytometry 10 ug/ml, Immunohistochemistry 2 - 6 ug/mL, Immunohistochemistry-Paraffin 2 - 6 ug/mL, Peptide ELISA Detection limit 1:16000 |
| Application Notes | IHC-P: Human spleen shows nuclear staining in select splenocytes. IHC on human brain sections reported in scientific literature (PMID: 22829908). |

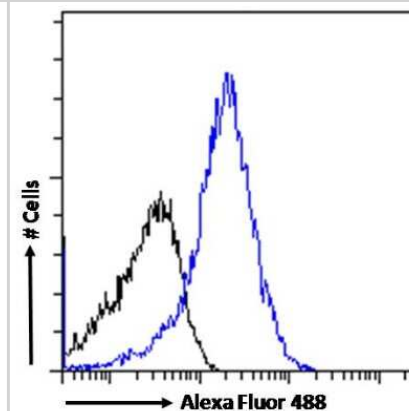


Images

Immunohistochemistry-Paraffin: TET2 Antibody [NBP2-27465] - Staining of paraffin embedded Human Spleen. Antibody at 4 ug/mL. Steamed antigen retrieval with citrate buffer pH 6, HRP-staining.



Flow Cytometry: TET2 Antibody [NBP2-27465] - Flow cytometric analysis of paraformaldehyde fixed A431 cells (blue line), permeabilized with 0.5% Triton. Primary incubation 1hr (10ug/ml) followed by Alexa Fluor 488 secondary antibody (1ug/ml). IgG control: Unimmunized goat IgG (black line) followed by Alexa Fluor 488 secondary antibody.



Publications

Langemeijer SM, Kuiper RP, Berends M et al. Acquired mutations in TET2 are common in myelodysplastic syndromes. *Nature Gen* 2009-07-01 [PMID: 19483684]



Novus Biologicals USA

10730 E. Briarwood Avenue
Centennial, CO 80112
USA
Phone: 303.730.1950
Toll Free: 1.888.506.6887
Fax: 303.730.1966
nb-customerservice@bio-techne.com

Bio-Techne Canada

21 Canmotor Ave
Toronto, ON M8Z 4E6
Canada
Phone: 905.827.6400
Toll Free: 855.668.8722
Fax: 905.827.6402
canada.inquires@bio-techne.com

Bio-Techne Ltd

19 Barton Lane
Abingdon Science Park
Abingdon, OX14 3NB, United Kingdom
Phone: (44) (0) 1235 529449
Free Phone: 0800 37 34 15
Fax: (44) (0) 1235 533420
info.EMEA@bio-techne.com

General Contact Information

www.novusbio.com
Technical Support: nb-technical@bio-techne.com
Orders: nb-customerservice@bio-techne.com
General: novus@novusbio.com

Products Related to NBP2-27465

| | |
|-----------------|--|
| HAF017 | Rabbit anti-Goat IgG Secondary Antibody [HRP (Horseradish Peroxidase)] |
| HAF109 | Donkey anti-Goat IgG Secondary Antibody [HRP (Horseradish Peroxidase)] |
| NB410-28088-1mg | Goat IgG Isotype Control |
| NBP2-27465PEP | TET2 Antibody Blocking Peptide |

Limitations

This product is for research use only and is not approved for use in humans or in clinical diagnosis. Primary Antibodies are guaranteed for 1 year from date of receipt.

For more information on our 100% guarantee, please visit www.novusbio.com/guarantee

Earn gift cards/discounts by submitting a review: www.novusbio.com/reviews/submit/NBP2-27465

Earn gift cards/discounts by submitting a publication using this product:
www.novusbio.com/publications



