

Product Datasheet

MyD88 Antibody (4D6) [PE]

NBP2-27369PE

Unit Size: 0.1 ml

Store at 4C in the dark.

www.novusbio.com



technical@novusbio.com

Protocols, Publications, Related Products, Reviews, Research Tools and Images at:
www.novusbio.com/NBP2-27369PE

Updated 10/23/2024 v.20.1

Earn rewards for product
reviews and publications.

Submit a publication at www.novusbio.com/publications

Submit a review at www.novusbio.com/reviews/destination/NBP2-27369PE



NBP2-27369PE

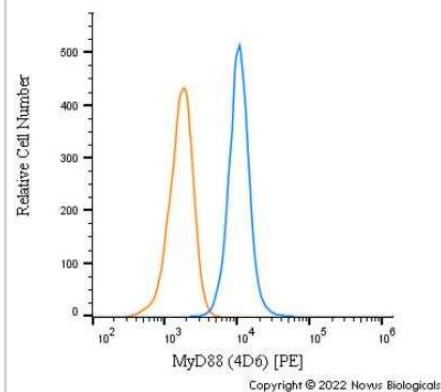
MyD88 Antibody (4D6) [PE]

Product Information	
Unit Size	0.1 ml
Concentration	Please see the vial label for concentration. If unlisted please contact technical services.
Storage	Store at 4C in the dark.
Clonality	Monoclonal
Clone	4D6
Preservative	0.05% Sodium Azide
Isotype	IgG1 Kappa
Conjugate	PE
Purity	Protein G purified
Buffer	PBS
Product Description	
Host	Mouse
Gene ID	4615
Gene Symbol	MYD88
Species	Human, Mouse, Primate, Rhesus Macaque
Reactivity Notes	Use in Mouse reported in scientific literature (PMID:33763070).
Specificity/Sensitivity	The immunogen is 100% homologous to isoform 3: 264 aa, isoform 4: 204 aa; isoform 5: 159 aa, CRA_a: 304 aa, CRA_b: 309 aa),
Immunogen	A portion of amino acids 50-100 of human MyD88 was used as the immunogen for this antibody.
Notes	This conjugate is made on demand. Actual recovery may vary from the stated volume of this product. The volume will be greater than or equal to the unit size stated on the datasheet.
Product Application Details	
Applications	Western Blot, Flow Cytometry, Flow (Intracellular), Immunocytochemistry/ Immunofluorescence, CyTOF-ready
Recommended Dilutions	Western Blot, Flow Cytometry, Immunocytochemistry/ Immunofluorescence, Flow (Intracellular), CyTOF-ready
Application Notes	Optimal dilution of this antibody should be experimentally determined.

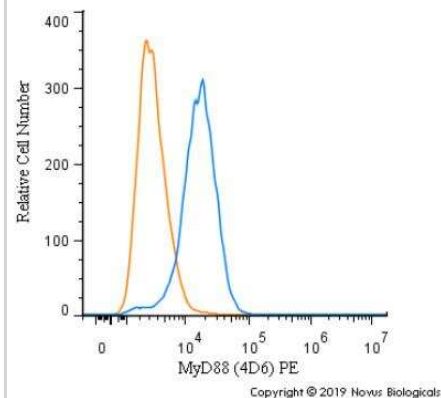


Images

Flow Cytometry: MyD88 Antibody (4D6) [PE] [NBP2-27369PE] - An intracellular stain was performed on Jurkat cells with MyD88 Antibody (4D6) NBP2-27369PE (blue) and a matched isotype control (orange). Cells were fixed with 4% PFA and then permeabilized with 0.1% saponin. Cells were incubated in an antibody dilution of 2.5 ug/mL for 30 minutes at room temperature. Both antibodies were conjugated to Phycoerythrin.



Flow Cytometry: MyD88 Antibody (4D6) [PE] [NBP2-27369PE] - An intracellular stain was performed on MCF7 cells with MyD88 (4D6) antibody NBP2-27369PE (blue) and a matched isotype control (orange). Cells were fixed with 4% PFA and then permeabilized with 0.1% saponin. Cells were incubated in an antibody dilution of 2.5 ug/mL for 30 minutes at room temperature. Both antibodies were conjugated to Phycoerythrin.





Novus Biologicals USA

10730 E. Briarwood Avenue
Centennial, CO 80112
USA
Phone: 303.730.1950
Toll Free: 1.888.506.6887
Fax: 303.730.1966
nb-customerservice@bio-techne.com

Bio-Techne Canada

21 Canmotor Ave
Toronto, ON M8Z 4E6
Canada
Phone: 905.827.6400
Toll Free: 855.668.8722
Fax: 905.827.6402
canada.inquires@bio-techne.com

Bio-Techne Ltd

19 Barton Lane
Abingdon Science Park
Abingdon, OX14 3NB, United Kingdom
Phone: (44) (0) 1235 529449
Free Phone: 0800 37 34 15
Fax: (44) (0) 1235 533420
info.EMEA@bio-techne.com

General Contact Information

www.novusbio.com
Technical Support: nb-technical@bio-techne.com
Orders: nb-customerservice@bio-techne.com
General: novus@novusbio.com

Products Related to NBP2-27369PE

NBP2-29328	MyD88 Inhibitor Peptide Set
NBP1-43319PE-0.5ml	Mouse IgG1 Kappa Isotype Control (P3.6.2.8.1) [PE]
NBP2-27369APC	MyD88 Antibody (4D6) [Allophycocyanin]
NB100-56698PEP	MyD88 Antibody Blocking Peptide

Limitations

This product is for research use only and is not approved for use in humans or in clinical diagnosis. Primary Antibodies are guaranteed for 1 year from date of receipt.

For more information on our 100% guarantee, please visit www.novusbio.com/guarantee

Earn gift cards/discounts by submitting a review: www.novusbio.com/reviews/submit/NBP2-27369PE

Earn gift cards/discounts by submitting a publication using this product:
www.novusbio.com/publications

