

Product Datasheet

LRH-1/NR5A2 Antibody NBP2-27204

Unit Size: 0.1 mg

Store at 4C short term. Aliquot and store at -20C long term. Avoid freeze-thaw cycles.

www.novusbio.com



technical@novusbio.com

Protocols, Publications, Related Products, Reviews, Research Tools and Images at:
www.novusbio.com/NBP2-27204

Updated 9/9/2025 v.20.1

Earn rewards for product
reviews and publications.

Submit a publication at www.novusbio.com/publications

Submit a review at www.novusbio.com/reviews/destination/NBP2-27204



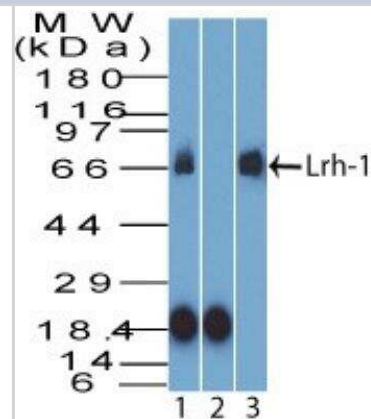
NBP2-27204

LRH-1/NR5A2 Antibody

Product Information	
Unit Size	0.1 mg
Concentration	0.5 mg/ml
Storage	Store at 4C short term. Aliquot and store at -20C long term. Avoid freeze-thaw cycles.
Clonality	Polyclonal
Preservative	0.05% Sodium Azide
Isotype	IgG
Purity	Protein A purified
Buffer	PBS and 0.05% BSA
Product Description	
Description	Novus Biologicals Rabbit LRH-1/NR5A2 Antibody (NBP2-27204) is a polyclonal antibody validated for use in WB and Simple Western. All Novus Biologicals antibodies are covered by our 100% guarantee.
Host	Rabbit
Gene ID	2494
Gene Symbol	NR5A2
Species	Human, Canine, Chicken, Equine, Feline, Guinea Pig, Opossum, Primate
Reactivity Notes	The amino acid sequence used as immunogen for this Lrh-1 antibody is 100% homologous in White-cheeked Gibbon, Macaque, 88% in Porcine, and Bovine, and 83% in Zebrafish.
Immunogen	A portion of amino acids 300-350 from human Lrh-1 was used as the immunogen for this antibody.
Product Application Details	
Applications	Western Blot, Simple Western
Recommended Dilutions	Western Blot 2-4ug/ml, Simple Western 1:10
Application Notes	In Simple Western only 10 - 15 uL of the recommended dilution is used per data point. See Simple Western Antibody Database for Simple Western validation: Tested in HepG2 lysate 0.5 mg/mL, separated by Size, antibody dilution of 1:10

Images

Western Blot: LRH-1/NR5A2 Antibody [NBP2-27204] - Analysis of Lrh-1. HEPG2 lysate in the 1) absence and 2) presence of immunizing peptide, 3) RAW lysate probed with 2 ug/ml of Lrh-1 antibody. Goat anti-rabbit Ig HRP secondary antibody and PicoTect ECL substrate solution were used for this test.



Simple Western: LRH-1/NR5A2 Antibody [NBP2-27204] - Simple Western lane view shows a specific band for LRH-1/NR5A2 in 0.5 mg/ml of HepG2 lysate. This experiment was performed under reducing conditions using the 12-230 kDa separation system.





Novus Biologicals USA

10730 E. Briarwood Avenue
Centennial, CO 80112
USA
Phone: 303.730.1950
Toll Free: 1.888.506.6887
Fax: 303.730.1966
nb-customerservice@bio-techne.com

Bio-Techne Canada

21 Canmotor Ave
Toronto, ON M8Z 4E6
Canada
Phone: 905.827.6400
Toll Free: 855.668.8722
Fax: 905.827.6402
canada.inquires@bio-techne.com

Bio-Techne Ltd

19 Barton Lane
Abingdon Science Park
Abingdon, OX14 3NB, United Kingdom
Phone: (44) (0) 1235 529449
Free Phone: 0800 37 34 15
Fax: (44) (0) 1235 533420
info.EMEA@bio-techne.com

General Contact Information

www.novusbio.com
Technical Support: nb-technical@bio-techne.com
Orders: nb-customerservice@bio-techne.com
General: novus@novusbio.com

Products Related to NBP2-27204

NBP2-33376H	Blue Marker Antibody (6F4-F6) [HRP]
HAF008	Goat anti-Rabbit IgG Secondary Antibody [HRP]
NB7160	Goat anti-Rabbit IgG (H+L) Secondary Antibody [HRP]
NBP2-24891	Rabbit IgG Isotype Control

Limitations

This product is for research use only and is not approved for use in humans or in clinical diagnosis. Primary Antibodies are guaranteed for 1 year from date of receipt.

For more information on our 100% guarantee, please visit www.novusbio.com/guarantee

Earn gift cards/discounts by submitting a review: www.novusbio.com/reviews/submit/NBP2-27204

Earn gift cards/discounts by submitting a publication using this product:
www.novusbio.com/publications

