

Product Datasheet

TLR4 Antibody (76B357.1) [PE] NBP2-27149PE

Unit Size: 0.1 ml

Store at 4C in the dark.

www.novusbio.com



technical@novusbio.com

Reviews: 1 **Publications: 16**

Protocols, Publications, Related Products, Reviews, Research Tools and Images at:
www.novusbio.com/NBP2-27149PE

Updated 10/23/2024 v.20.1

Earn rewards for product
reviews and publications.

Submit a publication at www.novusbio.com/publications

Submit a review at www.novusbio.com/reviews/destination/NBP2-27149PE



NBP2-27149PE

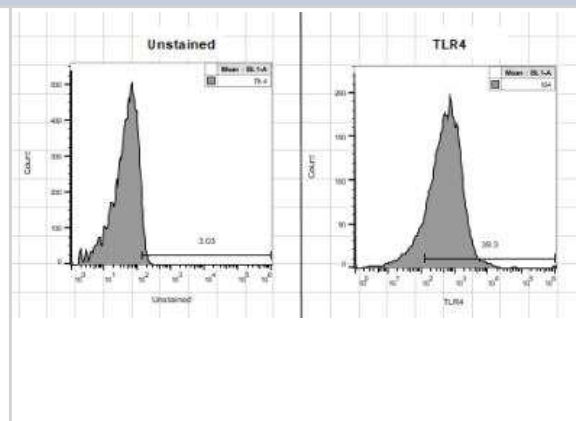
TLR4 Antibody (76B357.1) [PE]

Product Information	
Unit Size	0.1 ml
Concentration	Please see the vial label for concentration. If unlisted please contact technical services.
Storage	Store at 4C in the dark.
Clonality	Monoclonal
Clone	76B357.1
Preservative	0.05% Sodium Azide
Isotype	IgG2b Kappa
Conjugate	PE
Purity	Protein G purified
Buffer	PBS
Target Molecular Weight	95.7 kDa
Product Description	
Host	Mouse
Gene ID	7099
Gene Symbol	TLR4
Species	Human, Mouse, Rat, Porcine, Bovine, Mammal
Reactivity Notes	Ground squirrel reactivity reported by a verified customer review. Mammal reactivity reported in scientific literature (PMID: 25130694).
Immunogen	This TLR4 Antibody (76B357.1) was developed against a portion of amino acids 100-200 of human TLR4 (NP_612564).
Notes	This conjugate is made on demand. Actual recovery may vary from the stated volume of this product. The volume will be greater than or equal to the unit size stated on the datasheet.
Product Application Details	
Applications	Western Blot, Flow Cytometry, Flow (Cell Surface), Flow (Intracellular), Immunocytochemistry/ Immunofluorescence, Immunohistochemistry, Immunohistochemistry-Frozen, Immunohistochemistry-Paraffin, Block/Neutralize, Chromatin Immunoprecipitation (ChIP), CyTOF-ready, Knockdown Validated, Knockout Validated
Recommended Dilutions	Western Blot, Flow Cytometry, Immunohistochemistry, Immunocytochemistry/ Immunofluorescence, Immunohistochemistry-Paraffin, Immunohistochemistry-Frozen, Flow (Cell Surface), Flow (Intracellular), Chromatin Immunoprecipitation (ChIP), CyTOF-ready, Knockout Validated, Knockdown Validated, Block/Neutralize
Application Notes	Optimal dilution of this antibody should be experimentally determined.



Images

Flow Cytometry: TLR4 Antibody (76B357.1) [PE] [NBP2-27149PE] - B16-F10 mouse melanoma cell line. Flow Cytometry image submitted by a verified customer review.



Publications

Degraaf AJ, Zas?ona Z, Bourdonnay E, Peters-Golden M. Prostaglandin E2 reduces Toll-like Receptor 4 Expression in Alveolar Macrophages by Inhibition of Translation. *Am. J. Respir. Cell Mol. Biol.* 2014-03-06 [PMID: 24601788] (Flow-CS, Rat)

Details:

This citation used the PE version of this antibody.

Lunardi C, Bason C, Dolcino M et al. Antiflagellin antibodies recognize the autoantigens Toll-Like Receptor 5 and Pals 1-associated tight junction protein and induce monocytes activation and increased intestinal permeability in Crohn's disease. *J Intern Med.* 2009-02-01 [PMID: 18796002]

Details:

WB (IMG-5031A): Fig 1a (293T cells transfected with the human TLR4 gene). TLR4 was detected in the TLR4 293T transfected cells (lane 2, ~88 kDa), but not in the untransfected cells (lane 1). TLR4 was observed as an ~88 kDa band in lane 2. Note: The specificity of the antibody was TLR4 transfected validated in Fig 1 by western blot [compare lanes 1 (untransfected) and 2 (TLR4 transfected)].

Wu J, Meng Z, Jiang M et al. Toll-like receptor-induced innate immune responses in non-parenchymal liver cells are cell type-specific. *Immunology.* [PMID: 19922426]

Details:

Citation using the PE/Cy5 form of this antibody.

Allam JP, Peng WM, Appel T et al. Toll-like receptor 4 ligation enforces tolerogenic properties of oral mucosal Langerhans cells. *J Allergy Clin Immunol.* 2008-02-01 [PMID: 18036651]

Details:

Flow (cell surface): Oral mucosa from the vestibular region were obtained from non-tumor and noninflamed human patients, Fig 1C.

Cohen PA, Koski GK, Czerniecki BJ et al. STAT3- and STAT5-dependent pathways competitively regulate the pan-differentiation of CD34pos cells into tumor-competent dendritic cells. *Blood.* 2008-09-01 [PMID: 18577706]

Details:

Flow (intracellular), mouse bone marrow cells, Fig. 1E: 1. TLR3 FITC (IMG-315C) 2. TLR4 FITC (IMG-417C) 3. TLR7 (IMG-665A) 4. TLR8 FITC (IMG-321C) 5. TLR9 FITC (IMG-305C).

Liu Y, Fatheree NY, Mangalat N, Rhoads JM. *Lactobacillus reuteri* strains reduce incidence and severity of experimental necrotizing enterocolitis via modulation of TLR4 and NF- κ B signaling in the intestine. *Am J Physiol Gastrointest Liver Physiol.* 2012-03-15 [PMID: 22207578]

Zanoni G, Navone R, Lunardi C et al. In Celiac Disease, a Subset of Autoantibodies Against Transglutaminase Binds Toll-Like Receptor 4 and Induces Activation of Monocytes *PLoS Med* 2006-09-01 [PMID: 16984219]

Johnston MJ, Wang A, Catarino ME et al. Extracts of the rat tapeworm, *Hymenolepis diminuta*, suppress macrophage activation in vitro and alleviate chemically induced colitis in mice. *Infect Immun*. 2010-03-01 [PMID: 20028812]

Janardhanam SB, Prakasam S, Swaminathan VT et al. Differential expression of TLR-2 and TLR-4 in the epithelial cells in oral lichen planus. *Arch Oral Biol*. 2012-05-01 [PMID: 22119043]

Details:

IHC (P) of human oral epithelium (Fig 1): 1. TLR2 (IMG-319) 2. TLR4 (IMG-5031A) Note: Both antibodies were used at 0.5/ml. Cutaneous epithelium was used as a positive control for TLR2 and TLR4 expression.

Jazaeri F, Tavangar SM, Ghazi-Khansari M et al. Cirrhosis is associated with development of tolerance to cardiac chronotropic effect of endotoxin in rats. *Liver Int*. 2013-03-01 [PMID: 23311391]

Details:

IMG-5031A (clone 76B357.1), IHC (P): Fig 3 (rat atrial tissue). TLR4 staining was observed in myocytes and endothelial cells. LPS upregulated TLR4 expression. Human breast tissue was used as positive control.

Abdi J, Mutis T, Garssen J, Redegeld F. Characterization of the Toll-like receptor expression profile in human multiple myeloma cells. *PLoS One*. 2013-04-08 [PMID: 23593278]

Details:

Antibodies cited [multiple myeloma (MM) cell lines, human intestine tissue lysate, PBMC, mouse splenocytes] for WB (Figs 2, 3, 4A, 4B, 5, Table 1) and Flow (Intracellular): Figs 4C, 6-8, Table 1: 1. TLR1 (IMG-5012) 2. TLR2 (IMG-416A) 3. TLR3 (IMG-315A) 4. TL

Semar S, Klotz M, Letiembre M et al. Changes of the enteric nervous system in amyloid-B protein precursor transgenic mice correlate with disease progression. *J Alzheimers Dis*. 2013-01-01 [PMID: 23531500]

More publications at <http://www.novusbio.com/NBP2-27149PE>



Novus Biologicals USA

10730 E. Briarwood Avenue
Centennial, CO 80112
USA
Phone: 303.730.1950
Toll Free: 1.888.506.6887
Fax: 303.730.1966
nb-customerservice@bio-techne.com

Bio-Techne Canada

21 Canmotor Ave
Toronto, ON M8Z 4E6
Canada
Phone: 905.827.6400
Toll Free: 855.668.8722
Fax: 905.827.6402
canada.inquires@bio-techne.com

Bio-Techne Ltd

19 Barton Lane
Abingdon Science Park
Abingdon, OX14 3NB, United Kingdom
Phone: (44) (0) 1235 529449
Free Phone: 0800 37 34 15
Fax: (44) (0) 1235 533420
info.EMEA@bio-techne.com

General Contact Information

www.novusbio.com
Technical Support: nb-technical@bio-techne.com
Orders: nb-customerservice@bio-techne.com
General: novus@novusbio.com

Products Related to NBP2-27149PE

NBP2-25295-1.0mg	LPS from E. Coli, TLR4 ligand
NBP2-26244	TLR4 Inhibitor Peptide Set
NBP1-43317PE	Mouse IgG2b Kappa Light Chain Isotype Control (MG2b) [PE]
NBP2-27149APC	TLR4 Antibody (76B357.1) [Allophycocyanin]

Limitations

This product is for research use only and is not approved for use in humans or in clinical diagnosis. Primary Antibodies are guaranteed for 1 year from date of receipt.

For more information on our 100% guarantee, please visit www.novusbio.com/guarantee

Earn gift cards/discounts by submitting a review: www.novusbio.com/reviews/submit/NBP2-27149PE

Earn gift cards/discounts by submitting a publication using this product:
www.novusbio.com/publications

