

Product Datasheet

CLEC-1 Antibody NBP2-27096

Unit Size: 0.1 mg

Store at 4C short term. Aliquot and store at -20C long term. Avoid freeze-thaw cycles.

www.novusbio.com



technical@novusbio.com

Publications: 1

Protocols, Publications, Related Products, Reviews, Research Tools and Images at:
www.novusbio.com/NBP2-27096

Updated 10/23/2024 v.20.1

Earn rewards for product
reviews and publications.

Submit a publication at www.novusbio.com/publications

Submit a review at www.novusbio.com/reviews/destination/NBP2-27096

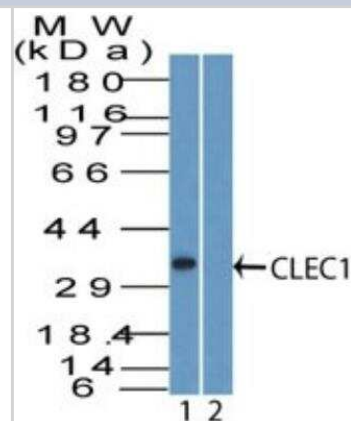


NBP2-27096**CLEC-1 Antibody**

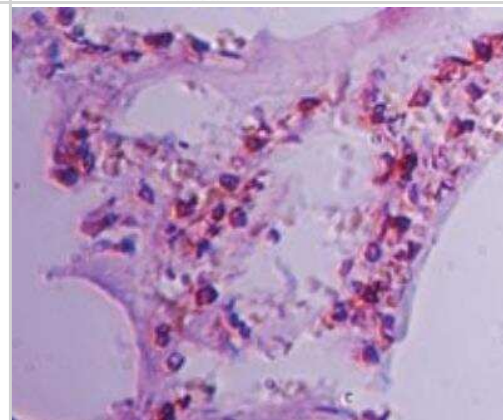
Product Information	
Unit Size	0.1 mg
Concentration	0.5 mg/ml
Storage	Store at 4C short term. Aliquot and store at -20C long term. Avoid freeze-thaw cycles.
Clonality	Polyclonal
Preservative	0.05% Sodium Azide
Isotype	IgG
Purity	Protein A purified
Buffer	0.2 ml PBS and 0.05% BSA
Product Description	
Host	Rabbit
Gene ID	51267
Gene Symbol	CLEC1A
Species	Human, Mouse, Primate
Reactivity Notes	Use in Mouse reported in scientific literature (PMID:10.1167/iops.62.6.28). Orangutan, chimpanzee, and white-cheeked gibbon (100%), New world monkey, crab-eating macaque, and rhesus monkey (89%), Porcine (78%), Canine, african bush elephant, and rabbit (72%), panda, cattle, chinese hamster, and horse (67%), Rat (61%).
Immunogen	A portion of amino acids 50-100 from human CLEC1 was used as the immunogen for this antibody.
Product Application Details	
Applications	Western Blot, Immunohistochemistry, Immunohistochemistry-Paraffin
Recommended Dilutions	Western Blot 2-4ug/ml~, Immunohistochemistry, Immunohistochemistry-Paraffin 5ug/ml

Images

Western Blot: CLEC-1 Antibody [NBP2-27096] - Analysis of CLEC1 using CLEC1 antibody. Human lung tissue lysate in the 1) absence and 2) presence of immunizing peptide probed with 2 ug/ml of CLEC1 antibody. goat anti-rabbit Ig HRP secondary antibody and PicoTest ECL substrate solution were used for this test.



Immunohistochemistry-Paraffin: CLEC-1 Antibody [NBP2-27096] - Human lung tissue probed with CLEC1 antibody at 5 ug/ml.



Publications

Zhu G, Lyu L, Yang H et al. CLEC-1 Acts as a Negative Regulator of Dectin-1 Induced Host Inflammatory Response Signature in *Aspergillus fumigatus* Keratitis Investigative ophthalmology & visual science 2021-05-03 [PMID: 34043748] (WB, IF/IHC, Human, Mouse)



Novus Biologicals USA

10730 E. Briarwood Avenue
Centennial, CO 80112
USA
Phone: 303.730.1950
Toll Free: 1.888.506.6887
Fax: 303.730.1966
nb-customerservice@bio-techne.com

Bio-Techne Canada

21 Canmotor Ave
Toronto, ON M8Z 4E6
Canada
Phone: 905.827.6400
Toll Free: 855.668.8722
Fax: 905.827.6402
canada.inquires@bio-techne.com

Bio-Techne Ltd

19 Barton Lane
Abingdon Science Park
Abingdon, OX14 3NB, United Kingdom
Phone: (44) (0) 1235 529449
Free Phone: 0800 37 34 15
Fax: (44) (0) 1235 533420
info.EMEA@bio-techne.com

General Contact Information

www.novusbio.com
Technical Support: nb-technical@bio-techne.com
Orders: nb-customerservice@bio-techne.com
General: novus@novusbio.com

Products Related to NBP2-27096

HAF008	Goat anti-Rabbit IgG Secondary Antibody [HRP]
NB7160	Goat anti-Rabbit IgG (H+L) Secondary Antibody [HRP]
NBP2-24891	Rabbit IgG Isotype Control
7754-BH-005/CF	TGF-beta 1 [Unconjugated]

Limitations

This product is for research use only and is not approved for use in humans or in clinical diagnosis. Primary Antibodies are guaranteed for 1 year from date of receipt.

For more information on our 100% guarantee, please visit www.novusbio.com/guarantee

Earn gift cards/discounts by submitting a review: www.novusbio.com/reviews/submit/NBP2-27096

Earn gift cards/discounts by submitting a publication using this product:
www.novusbio.com/publications

