

# Product Datasheet

## Siglec-H Antibody (23M14A10) - BSA Free NBP2-27061

Unit Size: 0.05 mg

Store at 4C short term. Aliquot and store at -20C long term. Avoid freeze-thaw cycles.

[www.novusbio.com](http://www.novusbio.com)



[technical@novusbio.com](mailto:technical@novusbio.com)

### Publications: 1

Protocols, Publications, Related Products, Reviews, Research Tools and Images at:  
[www.novusbio.com/NBP2-27061](http://www.novusbio.com/NBP2-27061)

Updated 10/23/2024 v.20.1

Earn rewards for product  
reviews and publications.

Submit a publication at [www.novusbio.com/publications](http://www.novusbio.com/publications)

Submit a review at [www.novusbio.com/reviews/destination/NBP2-27061](http://www.novusbio.com/reviews/destination/NBP2-27061)



**NBP2-27061**

Siglec-H Antibody (23M14A10) - BSA Free

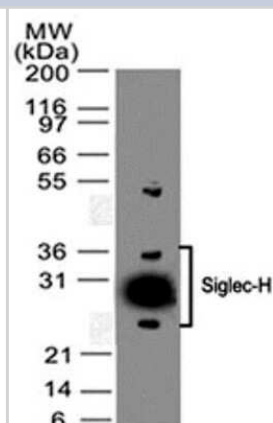
Product Information	
Unit Size	0.05 mg
Concentration	1.0 mg/ml
Storage	Store at 4C short term. Aliquot and store at -20C long term. Avoid freeze-thaw cycles.
Clonality	Monoclonal
Clone	23M14A10
Preservative	0.05% Sodium Azide
Isotype	IgG2a Kappa
Purity	Protein G purified
Buffer	PBS

Product Description	
Host	Rat
Gene ID	233274
Gene Symbol	Siglech
Species	Mouse
Immunogen	SkRSHTkRVERPATHMDQA (aa286-304)

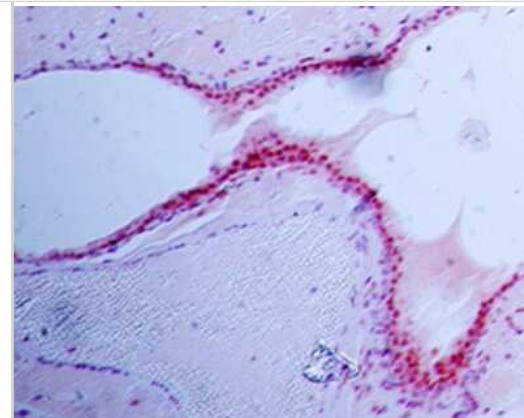
Product Application Details	
Applications	Western Blot, Flow Cytometry, Immunohistochemistry, Immunohistochemistry-Paraffin, CyTOF-ready
Recommended Dilutions	Western Blot 3-5ug/ml~, Flow Cytometry 1ug/10 <sup>6</sup> cells~, Immunohistochemistry, Immunohistochemistry-Paraffin 5ug/ml, CyTOF-ready
Application Notes	In IHC-P application, 1M EDTA buffer pH 9.0 was used for antigen retrieval. This antibody is CyTOF ready.

**Images**

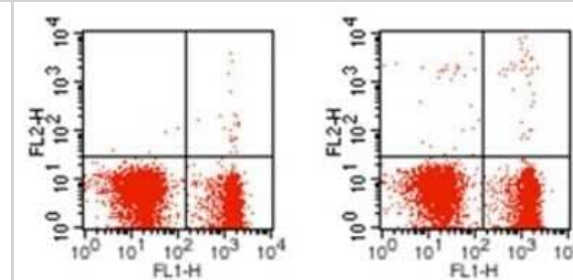
Western Blot: Siglec-H Antibody (23M14A10) [NBP2-27061] - WB analysis of mouse heart lysate using Siglec-H antibody (clone 23M14A10) at 3 ug/ml concentration.



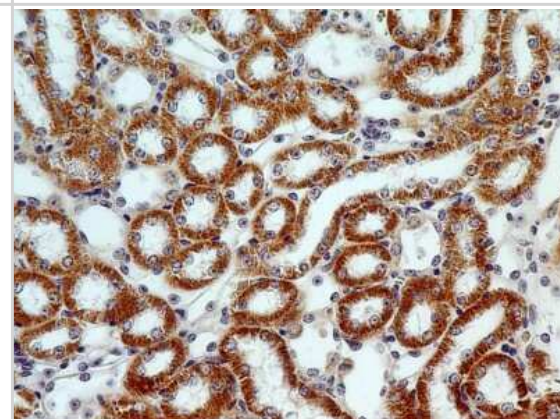
Immunohistochemistry-Paraffin: Siglec-H Antibody (23M14A10) [NBP2-27061] - IHC analysis of formalin-fixed paraffin-embedded tissue section of normal mouse lung using 5 ug/ml concentration of SiglecH antibody (clone 23M14A10). Alkaline Phosphatase based detection was used for final staining development.



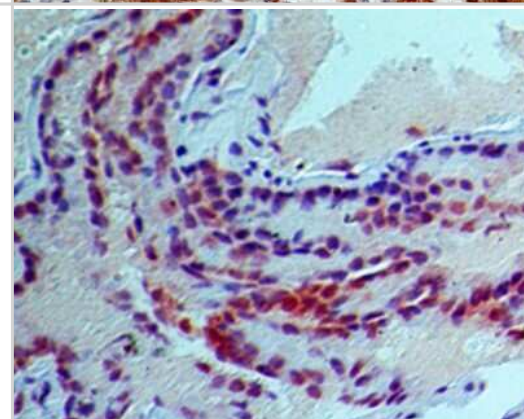
Flow Cytometry: Siglec-H Antibody (23M14A10) [NBP2-27061] - Analysis using the PE conjugate of NBP2-27061. Staining of freshly isolated Balb C mouse splenocytes with B220 (clone RA3-6B2) Alexa Fluor 488 antibody and with Rat IgG2a PE (isotype control, left) or anti-mouse Siglec H PE antibody (Clone: 23M14A10, right).



Immunohistochemistry-Paraffin: Siglec-H Antibody (23M14A10) [NBP2-27061] - IHC analysis of formalin-fixed paraffin-embedded tissue section of normal mouse kidney using 5 ug/ml concentration of SiglecH antibody (clone 23M14A10). The cells of various renal tubules showed specific immunopositivity for SiglecH.



Immunohistochemistry-Paraffin: Siglec-H Antibody (23M14A10) [NBP2-27061] - IHC analysis of formalin-fixed paraffin-embedded tissue section of normal mouse lung using 5 ug/ml concentration of SiglecH antibody (Clone 23M14A10). DAB based detection was used for final staining development.



## Publications

Saiga H, Ueno M, Tanaka T Et al. Transcription factor MafB-mediated inhibition of type I interferons in plasmacytoid dendritic cells International immunology 2021-11-03 [PMID: 34734243]



### **Novus Biologicals USA**

10730 E. Briarwood Avenue  
Centennial, CO 80112  
USA  
Phone: 303.730.1950  
Toll Free: 1.888.506.6887  
Fax: 303.730.1966  
nb-customerservice@bio-techne.com

### **Bio-Techne Canada**

21 Canmotor Ave  
Toronto, ON M8Z 4E6  
Canada  
Phone: 905.827.6400  
Toll Free: 855.668.8722  
Fax: 905.827.6402  
canada.inquires@bio-techne.com

### **Bio-Techne Ltd**

19 Barton Lane  
Abingdon Science Park  
Abingdon, OX14 3NB, United Kingdom  
Phone: (44) (0) 1235 529449  
Free Phone: 0800 37 34 15  
Fax: (44) (0) 1235 533420  
info.EMEA@bio-techne.com

### **General Contact Information**

www.novusbio.com  
Technical Support: nb-technical@bio-techne.com  
Orders: nb-customerservice@bio-techne.com  
General: novus@novusbio.com

### **Products Related to NBP2-27061**

---

HAF005	Goat anti-Rat IgG Secondary Antibody [HRP]
NBP1-75398	Goat anti-Rat IgG (H+L) Secondary Antibody (Pre-adsorbed)
NBP1-43321-0.5mg	Rat IgG2a Kappa Light Chain Isotype Control (R2a)
NBP2-27061APC	Siglec-H Antibody (23M14A10) [Allophycocyanin]

---

### **Limitations**

This product is for research use only and is not approved for use in humans or in clinical diagnosis. Primary Antibodies are guaranteed for 1 year from date of receipt.

For more information on our 100% guarantee, please visit [www.novusbio.com/guarantee](http://www.novusbio.com/guarantee)

Earn gift cards/discounts by submitting a review: [www.novusbio.com/reviews/submit/NBP2-27061](http://www.novusbio.com/reviews/submit/NBP2-27061)

Earn gift cards/discounts by submitting a publication using this product:  
[www.novusbio.com/publications](http://www.novusbio.com/publications)

