

Product Datasheet

Rhodopsin Antibody (A531) - BSA Free NBP2-25159

Unit Size: 0.1 ml

Store at 4C short term. Aliquot and store at -20C long term. Avoid freeze-thaw cycles.

www.novusbio.com



technical@novusbio.com

Publications: 3

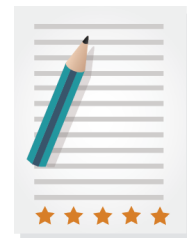
Protocols, Publications, Related Products, Reviews, Research Tools and Images at:
www.novusbio.com/NBP2-25159

Updated 2/23/2025 v.20.1

Earn rewards for product
reviews and publications.

Submit a publication at www.novusbio.com/publications

Submit a review at www.novusbio.com/reviews/destination/NBP2-25159



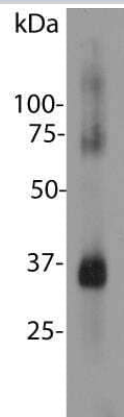
NBP2-25159

Rhodopsin Antibody (A531) - BSA Free

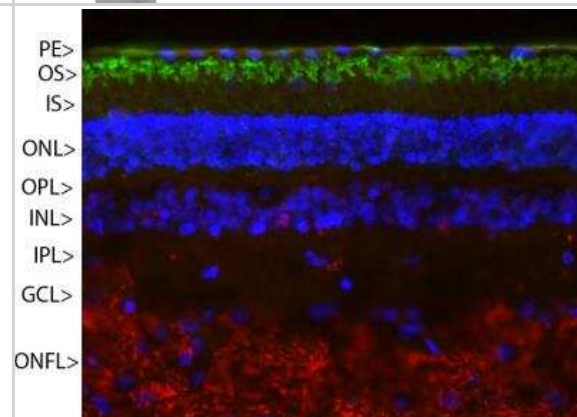
Product Information	
Unit Size	0.1 ml
Concentration	1 mg/ml
Storage	Store at 4C short term. Aliquot and store at -20C long term. Avoid freeze-thaw cycles.
Clonality	Monoclonal
Clone	A531
Preservative	0.035% Sodium Azide
Isotype	IgG1
Purity	Protein G purified
Buffer	50% PBS, 50% glycerol
Target Molecular Weight	35 kDa
Product Description	
Host	Mouse
Gene ID	6010
Gene Symbol	RHO
Species	Human, Mouse, Rat, Porcine, Bovine, Equine
Immunogen	Whole purified bovine Rhodopsin [UniProt# P02699]
Product Application Details	
Applications	Western Blot, Immunocytochemistry/ Immunofluorescence, Immunohistochemistry
Recommended Dilutions	Western Blot 1:5000, Immunohistochemistry 1:1000, Immunocytochemistry/ Immunofluorescence 1:1000
Application Notes	This Rhodopsin (A531) antibody is useful for Immunocytochemistry/Immunofluorescence, Immunohistochemistry, and Western Blot, where a band can be seen at ~35 kDa.

Images

Western Blot: Rhodopsin Antibody (A531) [NBP2-25159] - Blot of bovine retinal extracts. The antibody stains a band corresponding to retinal Rhodopsin at about 35kDa. Bands about 70 kDa and 140 kDa are aggregated forms of Rhodopsin. Note, due to the highly hydrophobic nature of Rhodopsin, it is important not to boil a sample containing it in SDS-PAGE sample buffer, as this will result in more extensive aggregation of the Rhodopsin protein.



Immunocytochemistry/Immunofluorescence: Rhodopsin Antibody (A531) [NBP2-25159] - Pig retinal section stained with NBP2-25159 (green) and counterstained with rabbit polyclonal antibody to NF-M NB300-133 (red) and DNA (blue). Rhodopsin is most abundant in the outer segments of retina (OS), NF-M is abundant in the optic nerve fiber layer (ONFL), but seen in processes and neurons in other regions also. Other layers are pigmented epithelium (PE), outer and inner nuclear layers (ONL, INL), outer and inner plexiform layers (OPL, IPL) and ganglion cell layer (GCL).



Publications

Bullock J, Polato F, Abu-Asab M et al. Degradation of Photoreceptor Outer Segments by the Retinal Pigment Epithelium Requires Pigment Epithelium-Derived Factor Receptor (PEDF-R) Investigative ophthalmology & visual science 2021-02-01 [PMID: 33605986]

Bullock J The Role of Pigment Epithelium-Derived Factor and Its Receptor in Retinal Cells Thesis 2020-01-01 (WB, Human)

Li Y, He X, Li J et al. Proliferation and differentiation of direct co-culture of bone marrow mesenchymal stem cells and pigmented cells from the ciliary margin Mol Med Rep 2017-01-01 [PMID: 28440470] (ICC/IF, Rat)



Novus Biologicals USA

10730 E. Briarwood Avenue
Centennial, CO 80112
USA
Phone: 303.730.1950
Toll Free: 1.888.506.6887
Fax: 303.730.1966
nb-customerservice@bio-techne.com

Bio-Techne Canada

21 Canmotor Ave
Toronto, ON M8Z 4E6
Canada
Phone: 905.827.6400
Toll Free: 855.668.8722
Fax: 905.827.6402
canada.inquires@bio-techne.com

Bio-Techne Ltd

19 Barton Lane
Abingdon Science Park
Abingdon, OX14 3NB, United Kingdom
Phone: (44) (0) 1235 529449
Free Phone: 0800 37 34 15
Fax: (44) (0) 1235 533420
info.EMEA@bio-techne.com

General Contact Information

www.novusbio.com
Technical Support: nb-technical@bio-techne.com
Orders: nb-customerservice@bio-techne.com
General: novus@novusbio.com

Products Related to NBP2-25159

HAF007	Goat anti-Mouse IgG Secondary Antibody [HRP]
NB720-B	Rabbit anti-Mouse IgG (H+L) Secondary Antibody [Biotin]
NBP1-97005-0.5mg	Mouse IgG1 Isotype Control (MG1)
NBP2-55553PEP	Rhodopsin Recombinant Protein Antigen

Limitations

This product is for research use only and is not approved for use in humans or in clinical diagnosis. Primary Antibodies are guaranteed for 1 year from date of receipt.

For more information on our 100% guarantee, please visit www.novusbio.com/guarantee

Earn gift cards/discounts by submitting a review: www.novusbio.com/reviews/submit/NBP2-25159

Earn gift cards/discounts by submitting a publication using this product:
www.novusbio.com/publications

