

# Product Datasheet

## Lamin A + C Antibody - BSA Free NBP2-25152

Unit Size: 0.1 ml

Store at 4C short term. Aliquot and store at -20C long term. Avoid freeze-thaw cycles.

[www.novusbio.com](http://www.novusbio.com)



[technical@novusbio.com](mailto:technical@novusbio.com)

### Publications: 3

Protocols, Publications, Related Products, Reviews, Research Tools and Images at:  
[www.novusbio.com/NBP2-25152](http://www.novusbio.com/NBP2-25152)

Updated 2/23/2025 v.20.1

Earn rewards for product  
reviews and publications.

Submit a publication at [www.novusbio.com/publications](http://www.novusbio.com/publications)

Submit a review at [www.novusbio.com/reviews/destination/NBP2-25152](http://www.novusbio.com/reviews/destination/NBP2-25152)



**NBP2-25152**

Lamin A + C Antibody - BSA Free

Product Information	
<b>Unit Size</b>	0.1 ml
<b>Concentration</b>	Please see the vial label for concentration. If unlisted please contact technical services.
<b>Storage</b>	Store at 4C short term. Aliquot and store at -20C long term. Avoid freeze-thaw cycles.
<b>Clonality</b>	Polyclonal
<b>Preservative</b>	0.035% Sodium Azide
<b>Isotype</b>	IgY
<b>Purity</b>	IgY purified
<b>Buffer</b>	PBS. Supplied as concentrated total IgY preparation from egg yolk. Exact concentration of target specific IgY is not quantifiable as the preparation contains both immune IgY specific for the target and also irrelevant, non-immune IgY.
<b>Target Molecular Weight</b>	74/65 kDa

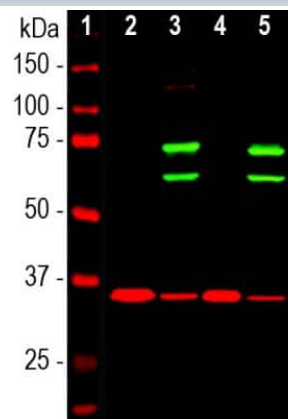
Product Description	
<b>Host</b>	Chicken
<b>Gene ID</b>	4000
<b>Gene Symbol</b>	LMNA
<b>Species</b>	Human, Mouse, Rat
<b>Marker</b>	Nuclear Envelope Marker
<b>Immunogen</b>	Full length recombinant human lamin A protein expressed in and purified from E. coli.
<b>Notes</b>	Chicken products cannot be exported to Canada.

Product Application Details	
<b>Applications</b>	Western Blot, Immunocytochemistry/ Immunofluorescence
<b>Recommended Dilutions</b>	Western Blot 1:2000, Immunocytochemistry/ Immunofluorescence 1:1000
<b>Application Notes</b>	This Lamin A + C antibody is useful for Immunocytochemistry/Immunofluorescence and Western Blot, where two bands can be seen at 74 kDa (Lamin A) and 65 kDa (Lamin C).

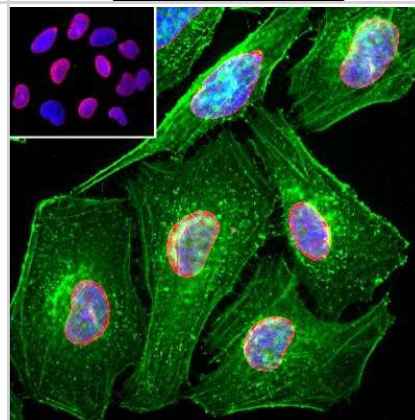


## Images

**Western Blot: Lamin A + C Antibody [NBP2-25152]** - Western blot analysis of cytosolic or nuclear enriched fractions of cell lines probed with chicken pAb to lamin A/C, NBP2-25152, dilution 1:1,000 in green: [1] protein standard (red), [2] HeLa cytosol, [3] HeLa nuclear, [4] NIH-3T3 cytosol, and [5] NIH-3T3 nuclear fractions. Two strong bands at 74 and 65kDa correspond to lamin A and lamin C proteins respectively, detected exclusively in the nuclear fractions. The same blot was simultaneously probed with mouse mAb to GAPDH, in red. The single band at 37kDa represents GAPDH protein which is expressed predominantly in the cytosolic fractions.



**Immunocytochemistry/Immunofluorescence: Lamin A + C Antibody [NBP2-25152]** - Analysis of HeLa cells stained with chicken pAb to lamin A/C, NBP2-25152, dilution 1:2,000 in red, and costained with mouse mAb to actin, dilution 1:500, in green. The blue is Hoechst staining of nuclear DNA. The CPCA-LaminAC antibody specifically labels the nuclear lamina, while the actin antibody stains the submembranous actin-rich cytoskeleton, stress fibers and bundles of actin associated with cell adhesion sites.



## Publications

Arijita Chakraborty, Arijit Dutta, Leonardo G. Dettori, Rosemarie Daoud, Jing Li, Leticia Gonzalez, Xiaoyu Xue, Heidi Hehnl, Patrick Sung, Alaji Bah, Wenyi Feng Complex interplay between FMRP and DHX9 during DNA replication stress *The Journal of Biological Chemistry* 2023-12-16 [PMID: 38110032]

Shirakura K, Baluk P, Nottebaum AF et al. Shear stress control of vascular leaks and atheromas through Tie2 activation by VE-PTP sequestration *EMBO molecular medicine* 2023-02-06 [PMID: 36740996] (IHC, Mouse)

Chakraborty A, Jenjaroenpun P, Li J et al. Replication Stress Induces Global Chromosome Breakage in the Fragile X Genome *Cell Rep* 2020-09-22 [PMID: 32966779]



### **Novus Biologicals USA**

10730 E. Briarwood Avenue  
Centennial, CO 80112  
USA  
Phone: 303.730.1950  
Toll Free: 1.888.506.6887  
Fax: 303.730.1966  
nb-customerservice@bio-techne.com

### **Bio-Techne Canada**

21 Canmotor Ave  
Toronto, ON M8Z 4E6  
Canada  
Phone: 905.827.6400  
Toll Free: 855.668.8722  
Fax: 905.827.6402  
canada.inquires@bio-techne.com

### **Bio-Techne Ltd**

19 Barton Lane  
Abingdon Science Park  
Abingdon, OX14 3NB, United Kingdom  
Phone: (44) (0) 1235 529449  
Free Phone: 0800 37 34 15  
Fax: (44) (0) 1235 533420  
info.EMEA@bio-techne.com

### **General Contact Information**

www.novusbio.com  
Technical Support: nb-technical@bio-techne.com  
Orders: nb-customerservice@bio-techne.com  
General: novus@novusbio.com

### **Products Related to NBP2-25152**

---

BAF010	Goat anti-Chicken IgY Secondary Antibody [Biotin]
NB7276	Goat anti-Chicken IgM Heavy Chain Secondary Antibody
H00004000-P01-2ug	Recombinant Human Lamin A + C GST (N-Term) Protein
210-TA-005	TNF-alpha [Unconjugated]

---

### **Limitations**

This product is for research use only and is not approved for use in humans or in clinical diagnosis. Primary Antibodies are guaranteed for 1 year from date of receipt.

For more information on our 100% guarantee, please visit [www.novusbio.com/guarantee](http://www.novusbio.com/guarantee)

Earn gift cards/discounts by submitting a review: [www.novusbio.com/reviews/submit/NBP2-25152](http://www.novusbio.com/reviews/submit/NBP2-25152)

Earn gift cards/discounts by submitting a publication using this product:  
[www.novusbio.com/publications](http://www.novusbio.com/publications)

