

# Product Datasheet

## alpha-Synuclein Antibody - BSA Free NBP2-25146

Unit Size: 0.1 ml

Store at 4C short term. Aliquot and store at -20C long term. Avoid freeze-thaw cycles.

[www.novusbio.com](http://www.novusbio.com)



[technical@novusbio.com](mailto:technical@novusbio.com)

Reviews: 1

Protocols, Publications, Related Products, Reviews, Research Tools and Images at:  
[www.novusbio.com/NBP2-25146](http://www.novusbio.com/NBP2-25146)

Updated 9/9/2025 v.20.1

Earn rewards for product  
reviews and publications.

Submit a publication at [www.novusbio.com/publications](http://www.novusbio.com/publications)

Submit a review at [www.novusbio.com/reviews/destination/NBP2-25146](http://www.novusbio.com/reviews/destination/NBP2-25146)



**NBP2-25146**

alpha-Synuclein Antibody - BSA Free

Product Information	
Unit Size	0.1 ml
Concentration	1 mg/ml
Storage	Store at 4C short term. Aliquot and store at -20C long term. Avoid freeze-thaw cycles.
Clonality	Polyclonal
Preservative	0.035% Sodium Azide
Isotype	IgY
Purity	IgY purified
Buffer	50% PBS, 50% glycerol. Supplied as concentrated total IgY preparation from egg yolk. Exact concentration of target specific IgY is not quantifiable as the preparation contains both immune IgY specific for the target and also irrelevant, non-immune IgY.
Target Molecular Weight	15 kDa

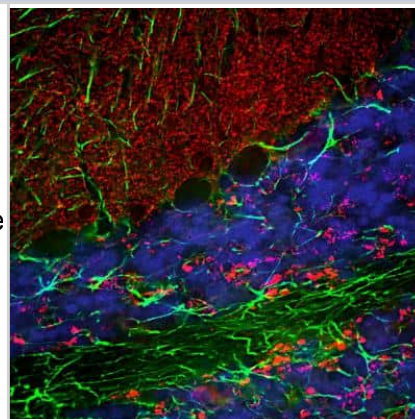
Product Description	
Description	Novus Biologicals Chicken alpha-Synuclein Antibody - BSA Free (NBP2-25146) is a polyclonal antibody validated for use in IHC, WB and ICC/IF. All Novus Biologicals antibodies are covered by our 100% guarantee.
Host	Chicken
Gene ID	6622
Gene Symbol	SNCA
Species	Human, Mouse, Rat, Porcine, Bovine, Equine
Immunogen	This alpha-Synuclein Antibody was developed against Full length recombinant human alpha-Synuclein with the epitope from amino acids 61-95.
Notes	Chicken products cannot be exported to Canada.

Product Application Details	
Applications	Western Blot, Immunocytochemistry/ Immunofluorescence, Immunohistochemistry, Immunohistochemistry Free-Floating
Recommended Dilutions	Western Blot 1:2000, Immunohistochemistry 1:1000, Immunocytochemistry/ Immunofluorescence 1:1000, Immunohistochemistry Free-Floating 1:1000
Application Notes	This alpha-Synuclein antibody is useful for Immunocytochemistry/Immunofluorescence and Western Blot, where a band can be seen at ~15 kDa.

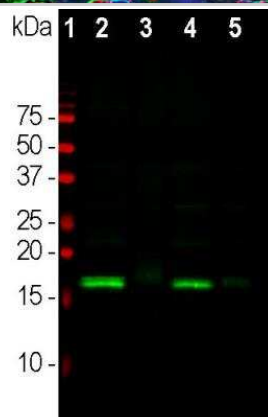


## Images

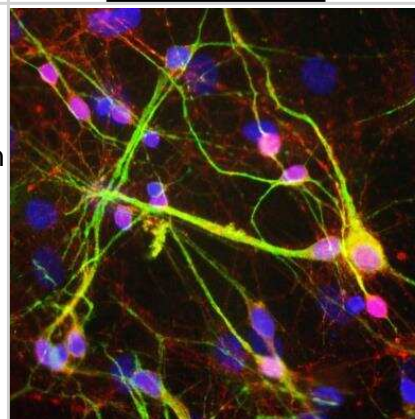
**Immunohistochemistry: alpha-Synuclein Antibody [NBP2-25146]** - Immunofluorescent analysis of a section of rat cerebellum stained with chicken pAb to alpha-synuclein, NBP2-25146, dilution 1:3,000 in red, and costained with rabbit pAb to GFAP, dilution 1:5,000 in green. The blue is DAPI staining of nuclear DNA. Following transcatheter perfusion of rat with 4% paraformaldehyde, brain was post fixed for 24 hours, cut to 45uM, and free-floating sections were stained with above antibodies. The alpha-synuclein protein is concentrated in presynaptic regions in the granular and molecular layers, while GFAP antibody stains the network of Bergmann and astroglial cells.



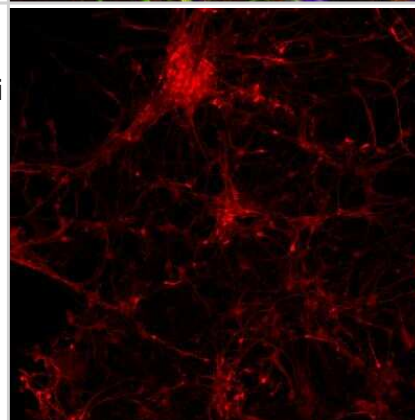
**Western Blot: alpha-Synuclein Antibody [NBP2-25146]** - Western blot analysis of different tissue lysates using chicken pAb to alpha-synuclein, NBP2-25146, dilution 1:2,000 in green: [1] protein standard (red), [2] rat brain, [3] rat spinal cord, [4] mouse brain, [5] mouse spinal cord. The strong band at about 15kDa corresponds to the alpha-synuclein protein in brain extracts, which are rich in synapses, while a weaker band is seen in spinal cord extracts where synapses are a more minor component.



**Immunocytochemistry/Immunofluorescence: Synuclein-alpha Antibody [NBP2-25146]** - Mixed rat neuron-glia cultures stained with NBP2-25146, polyclonal antibody to alpha-Synuclein (red) and monoclonal antibody to MAP2 (NBP2-25156, green). The alpha-Synuclein antibody stains vesicular structures, the perikarya and processes of the neurons in this image. Note that some of the neuronal perikarya contain much more alpha-Synuclein than others. The blue channel shows the localization of DNA.



**Immunocytochemistry/Immunofluorescence: alpha-Synuclein Antibody [NBP2-25146]** - Human iPS derived neurons, fixed in 4% formaldehyde solution. NBP2-25146 diluted 1:1500, followed by staining with Alexa anti chicken-594 (1:1000) secondary antibody. All antibodies were diluted in PBS/BSA 3% (w/v) Triton X-100 0,3 % (v/v). Images taken by an Arrayscan (Cellomics). Image from verified customer review.





### **Novus Biologicals USA**

10730 E. Briarwood Avenue  
Centennial, CO 80112  
USA  
Phone: 303.730.1950  
Toll Free: 1.888.506.6887  
Fax: 303.730.1966  
nb-customerservice@bio-techne.com

### **Bio-Techne Canada**

21 Canmotor Ave  
Toronto, ON M8Z 4E6  
Canada  
Phone: 905.827.6400  
Toll Free: 855.668.8722  
Fax: 905.827.6402  
canada.inquires@bio-techne.com

### **Bio-Techne Ltd**

19 Barton Lane  
Abingdon Science Park  
Abingdon, OX14 3NB, United Kingdom  
Phone: (44) (0) 1235 529449  
Free Phone: 0800 37 34 15  
Fax: (44) (0) 1235 533420  
info.EMEA@bio-techne.com

### **General Contact Information**

www.novusbio.com  
Technical Support: nb-technical@bio-techne.com  
Orders: nb-customerservice@bio-techne.com  
General: novus@novusbio.com

### **Products Related to NBP2-25146**

---

BAF010	Goat anti-Chicken IgY Secondary Antibody [Biotin]
NB7276	Goat anti-Chicken IgM Heavy Chain Secondary Antibody
NBP2-54789-100ug	Recombinant Human alpha-Synuclein Active, Pre-formed Fibrils, (Type 1) Protein
NBP2-54787-0.1mg	Recombinant Human alpha-Synuclein Active, Pre-formed Fibrils, (Type 2) Protein

---

### **Limitations**

This product is for research use only and is not approved for use in humans or in clinical diagnosis. Primary Antibodies are guaranteed for 1 year from date of receipt.

For more information on our 100% guarantee, please visit [www.novusbio.com/guarantee](http://www.novusbio.com/guarantee)

Earn gift cards/discounts by submitting a review: [www.novusbio.com/reviews/submit/NBP2-25146](http://www.novusbio.com/reviews/submit/NBP2-25146)

Earn gift cards/discounts by submitting a publication using this product:  
[www.novusbio.com/publications](http://www.novusbio.com/publications)



