

# Product Datasheet

## Rabbit IgG Isotype Control [PE] NBP2-24983

Unit Size: 0.1 ml

Store at 4C in the dark.

[www.novusbio.com](http://www.novusbio.com)



[technical@novusbio.com](mailto:technical@novusbio.com)

**Reviews: 1 Publications: 6**

Protocols, Publications, Related Products, Reviews, Research Tools and Images at:  
[www.novusbio.com/NBP2-24983](http://www.novusbio.com/NBP2-24983)

Updated 10/23/2024 v.20.1

**Earn rewards for product  
reviews and publications.**

Submit a publication at [www.novusbio.com/publications](http://www.novusbio.com/publications)

Submit a review at [www.novusbio.com/reviews/destination/NBP2-24983](http://www.novusbio.com/reviews/destination/NBP2-24983)



**NBP2-24983**

Rabbit IgG Isotype Control [PE]

<b>Product Information</b>	
<b>Unit Size</b>	0.1 ml
<b>Concentration</b>	Please contact technical services for concentration.
<b>Storage</b>	Store at 4C in the dark.
<b>Clonality</b>	Polyclonal
<b>Preservative</b>	0.05% Sodium Azide
<b>Isotype</b>	IgG
<b>Conjugate</b>	PE
<b>Purity</b>	Affinity purified
<b>Buffer</b>	PBS

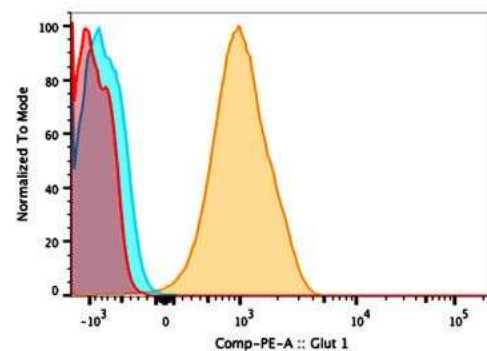
<b>Product Description</b>	
<b>Description</b>	This Rabbit IgG immunoglobulin is useful as an isotype control for Rabbit IgG antibody.
<b>Host</b>	Rabbit
<b>Gene ID</b>	3500
<b>Gene Symbol</b>	IGHG1
<b>Species</b>	Rabbit

<b>Product Application Details</b>	
<b>Applications</b>	Flow Cytometry
<b>Recommended Dilutions</b>	Flow Cytometry 1 ul/1 million cells
<b>Application Notes</b>	Optimal dilution of this antibody should be experimentally determined.

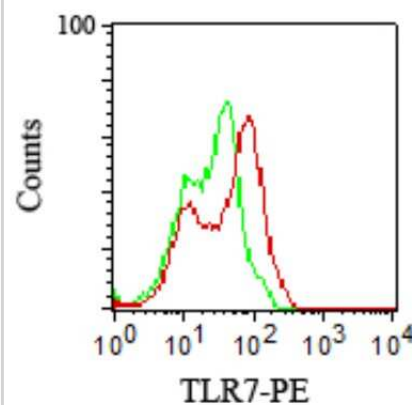


## Images

Flow Cytometry: Rabbit IgG Isotype Control [PE] [NBP2-24983] - FLOW analysis of Mouse CD4+ T cells that were stimulated with anti-CD3/CD28 beads and insulin (1ug/mL) for 5 days in culture media with additional glucose provided. PE conjugated Glut1 antibody stained cells (NB110-39113PE, Orange) were included as positive control which were compared with Rb IgG PE, NBP2-24983 as Isotype Control (Blue) as well as with fluorescence minus one/FMO control (Red) [Image submitted by Verified Customer - see Review for Protocol Details].



Flow Cytometry: Rabbit IgG Isotype Control [PE] [NBP2-24983] - PBMCs fixed and permeabilized using the Novus intracellular staining kit and stained with 1 ug of TLR7-PE conjugate (red) or rabbit IgG-PE conjugate isotype control (NBP2-24983, green).



## Publications

Kumagai S, Koyama S, Itahashi K Et al. Lactic acid promotes PD-1 expression in regulatory T cells in highly glycolytic tumor microenvironments *Cancer Cell* 2022-01-29 [PMID: 35090594]

### Details:

Citation using the PE version of this antibody.

Kumagai S, Togashi Y, Sakai C et al. An Oncogenic Alteration Creates a Microenvironment that Promotes Tumor Progression by Conferring a Metabolic Advantage to Regulatory T Cells *Immunity* 2020-07-14 [PMID: 32640259]

### Details:

Citation using the PE format of this antibody.

Zimmermann M, Aguilera FB, Castellucci M et al. Chromatin remodelling and autocrine TNFalpha are required for optimal interleukin-6 expression in activated human neutrophils. *Nat Commun.* [PMID: 25616107] (FLOW)

### Details:

Citation using the PE form of this antibody.

Shimazu T, Villena J, Tohno M et al. Immunobiotic *Lactobacillus jensenii* elicits anti-inflammatory activity in porcine intestinal epithelial cells by modulating negative regulators of the Toll-like receptor signaling pathway. *Infect Immun.* 2012-01-01 [PMID: 22083706] (Flow-CS)

### Details:

Cat no 20304E (normal rabbit IgG isotype control): Flow (cell surface), Fig 4C (porcine intestinal epitheliocyte cell line).

Wu J, Meng Z, Jiang M et al. Toll-like receptor-induced innate immune responses in non-parenchymal liver cells are cell type-specific. *Immunology.* [PMID: 19922426]

### Details:

Citation using the PE/Cy5 form of this antibody.

Patole PS, Pawar RD, Lech M et al. Expression and regulation of Toll-like receptors in lupus-like immune complex glomerulonephritis of MRL-Fas(lpr) mice. *Nephrol Dial Transplant.* 2006-11-01 [PMID: 16954173]

### Details:

For IHC (frozen) on mouse kidney sections (Fig. 5): TLR3 (IMG-516), TLR7 (IMG-581A), TLR9 (IMG-431) and Rabbit IgG isotype control antibody (20304). For Flow (Intracellular) and Flow (Cell surface) on J774 mouse macrophage-like cell line (Fig 6B): TLR7 (IMG-581A), TLR9 (IMG-431) and Rabbit IG isotype control antibody (20304).





### **Novus Biologicals USA**

10730 E. Briarwood Avenue  
Centennial, CO 80112  
USA  
Phone: 303.730.1950  
Toll Free: 1.888.506.6887  
Fax: 303.730.1966  
nb-customerservice@bio-techne.com

### **Bio-Techne Canada**

21 Canmotor Ave  
Toronto, ON M8Z 4E6  
Canada  
Phone: 905.827.6400  
Toll Free: 855.668.8722  
Fax: 905.827.6402  
canada.inquires@bio-techne.com

### **Bio-Techne Ltd**

19 Barton Lane  
Abingdon Science Park  
Abingdon, OX14 3NB, United Kingdom  
Phone: (44) (0) 1235 529449  
Free Phone: 0800 37 34 15  
Fax: (44) (0) 1235 533420  
info.EMEA@bio-techne.com

### **General Contact Information**

www.novusbio.com  
Technical Support: nb-technical@bio-techne.com  
Orders: nb-customerservice@bio-techne.com  
General: novus@novusbio.com

### **Products Related to NBP2-24983**

---

NBP1-99013-50ug	Recombinant Mouse IgG Protein
NB200-540	Complement C3 Antibody (11H9) - BSA Free
HAF008	Goat anti-Rabbit IgG Secondary Antibody [HRP]
NBP2-29373-100Tests	Annexin V Apoptosis Kit [FITC]

---

### **Limitations**

This product is for research use only and is not approved for use in humans or in clinical diagnosis. Isotype Controls are guaranteed for 1 year from date of receipt.

For more information on our 100% guarantee, please visit [www.novusbio.com/guarantee](http://www.novusbio.com/guarantee)

Earn gift cards/discounts by submitting a review: [www.novusbio.com/reviews/submit/NBP2-24983](http://www.novusbio.com/reviews/submit/NBP2-24983)

Earn gift cards/discounts by submitting a publication using this product:  
[www.novusbio.com/publications](http://www.novusbio.com/publications)

