

Product Datasheet

TLR5 Antibody - BSA Free NBP2-24827

Unit Size: 0.1 mg

Store at -20C. Avoid freeze-thaw cycles.

www.novusbio.com



technical@novusbio.com

Publications: 8

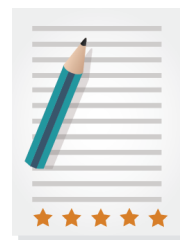
Protocols, Publications, Related Products, Reviews, Research Tools and Images at:
www.novusbio.com/NBP2-24827

Updated 2/23/2025 v.20.1

**Earn rewards for product
reviews and publications.**

Submit a publication at www.novusbio.com/publications

Submit a review at www.novusbio.com/reviews/destination/NBP2-24827



NBP2-24827

TLR5 Antibody - BSA Free

Product Information	
Unit Size	0.1 mg
Concentration	1.0 mg/ml
Storage	Store at -20C. Avoid freeze-thaw cycles.
Clonality	Polyclonal
Preservative	0.05% Sodium Azide
Isotype	IgG
Purity	Protein G purified
Buffer	PBS

Product Description	
Host	Rabbit
Gene ID	7100
Gene Symbol	TLR5
Species	Human, Mouse, Rat, Porcine
Reactivity Notes	Porcine reactivity reported in scientific literature (PMID: 24097563).
Immunogen	This antibody was developed against KLH-conjugated synthetic peptide corresponding to a portion of human TLR5 found between amino acids 300-350.

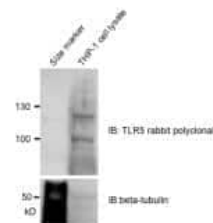
Product Application Details	
Applications	Western Blot, Flow Cytometry, Flow (Cell Surface), Immunohistochemistry, Immunohistochemistry-Paraffin, In vitro assay
Recommended Dilutions	Western Blot 1 - 3 ug/mL, Flow Cytometry 1 - 2 ug/10 ⁶ cells, Immunohistochemistry reported in scientific literature (PMID 30716659), Immunohistochemistry-Paraffin, In vitro assay reported in scientific literature (PMID 26084721), Flow (Cell Surface) reported in scientific literature (PMID 24532644)



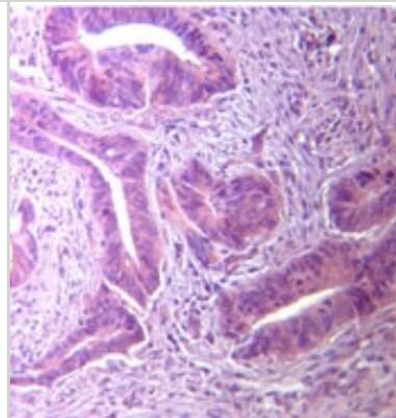
Images

Western Blot: TLR5 Antibody [NBP2-24827] - THP-1 cell lysate. Image from verified customer review.

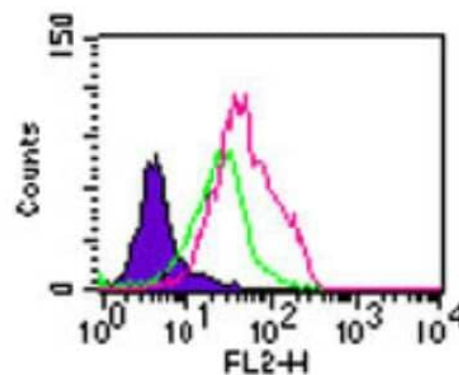
Validation of anti-TLR5 antibody NBP2-24827



Immunohistochemistry-Paraffin: TLR5 Antibody [NBP2-24827] - Analysis of TLR5 in FFPE human stomach tumor tissue using TLR5 antibody at 10 ug/mL.



Flow Cytometry: TLR5 Antibody [NBP2-24827] - Intracellular flow analysis of TLR5 in Balb/c mouse splenocytes using TLR5 antibody at 2 ug/10⁶ cells. Shaded histogram: cells without antibody. Green: rabbit IgG isotype control. Red: TLR5 antibody. Goat anti-rabbit PE was used as secondary antibody.



Publications

Kapelouzou A, Kontogiannis C, Tsilimigras DI et al. Differential expression patterns of Toll Like Receptors and Interleukin-37 between calcific aortic and mitral valve cusps in humans Cytokine 2019-04-01 [PMID: 30716659] (IF/IHC, Human)

Liu H, Chen F, Wu W et al. TLR5 mediates CD172alpha(+) intestinal lamina propria dendritic cell induction of Th17 cells. Sci Rep. 2016-02-24 [PMID: 26907705] (FLOW, Mouse)

Bens M, Vimont S, Ben Mkaddem S et al. Flagellin/TLR5 signalling activates renal collecting duct cells and facilitates invasion and cellular translocation of uropathogenic Escherichia coli Cell Microbiol 2014-04-29 [PMID: 24779433] (WB, Mouse)

Details:

This citation used the PE version of this antibody.

Lacave-Lapalun JV, Benderitter M, Linard C Flagellin and LPS each restores rat lymphocyte populations after colorectal irradiation J Leukoc Biol. 2014-06-01 [PMID: 24532644] (Flow-CS, Rat)

Details:

Citation using the Azide Free format of this antibody.

Muramatsu S, Tamada T, Nara M et al. Flagellin/TLR5 signaling potentiates airway serous secretion from swine tracheal submucosal glands. Am J Physiol Lung Cell Mol Physiol 2013-12-01 [PMID: 24097563] (IHC-P, WB, Porcine)

Brandon JA, Perez J, Jennings CD et al. Association between chronic liver and colon inflammation during the development of murine syngeneic graft-versus-host disease. Am J Physiol Gastrointest Liver Physiol. 2010-09-01 [PMID: 20634434] (FLOW, Mouse)

Details:

TLR5 (IMG-580). Flow (cell surface & intracellular): Mouse liver associated mononuclear (LAM) cell line, Fig S2.

Palladino M A, Johnson T A, Gupta R et al. Members of the Toll-like receptor family of innate immunity pattern-recognition receptors are abundant in the male rat reproductive tract. Biol Reprod. 2007-06-01 [PMID: 17314314] (WB, Rat)

Palladino Michael A, Savarese Michael A, Chapman Jessica L et al. Localization of Toll-like receptors on epididymal epithelial cells and spermatozoa. Am J Reprod Immunol. 2008-12-01 [PMID: 19032616]



Novus Biologicals USA

10730 E. Briarwood Avenue
Centennial, CO 80112
USA
Phone: 303.730.1950
Toll Free: 1.888.506.6887
Fax: 303.730.1966
nb-customerservice@bio-techne.com

Bio-Techne Canada

21 Canmotor Ave
Toronto, ON M8Z 4E6
Canada
Phone: 905.827.6400
Toll Free: 855.668.8722
Fax: 905.827.6402
canada.inquires@bio-techne.com

Bio-Techne Ltd

19 Barton Lane
Abingdon Science Park
Abingdon, OX14 3NB, United Kingdom
Phone: (44) (0) 1235 529449
Free Phone: 0800 37 34 15
Fax: (44) (0) 1235 533420
info.EMEA@bio-techne.com

General Contact Information

www.novusbio.com
Technical Support: nb-technical@bio-techne.com
Orders: nb-customerservice@bio-techne.com
General: novus@novusbio.com

Products Related to NBP2-24827

HAF008	Goat anti-Rabbit IgG Secondary Antibody [HRP]
NB7160	Goat anti-Rabbit IgG (H+L) Secondary Antibody [HRP]
NBP2-24891	Rabbit IgG Isotype Control
NBP2-24827PEP	TLR5 Antibody Blocking Peptide

Limitations

This product is for research use only and is not approved for use in humans or in clinical diagnosis. Primary Antibodies are guaranteed for 1 year from date of receipt.

For more information on our 100% guarantee, please visit www.novusbio.com/guarantee

Earn gift cards/discounts by submitting a review: www.novusbio.com/reviews/submit/NBP2-24827

Earn gift cards/discounts by submitting a publication using this product:
www.novusbio.com/publications

