

Product Datasheet

TLR5 Antibody (19D759.2) [FITC] NBP2-24787F

Unit Size: 0.1 ml

Store at 4C in the dark.

www.novusbio.com



technical@novusbio.com

Protocols, Publications, Related Products, Reviews, Research Tools and Images at:
www.novusbio.com/NBP2-24787F

Updated 10/23/2024 v.20.1

Earn rewards for product
reviews and publications.

Submit a publication at www.novusbio.com/publications

Submit a review at www.novusbio.com/reviews/destination/NBP2-24787F



NBP2-24787F

TLR5 Antibody (19D759.2) [FITC]

Product Information	
Unit Size	0.1 ml
Concentration	Please see the vial label for concentration. If unlisted please contact technical services.
Storage	Store at 4C in the dark.
Clonality	Monoclonal
Clone	19D759.2
Preservative	0.05% Sodium Azide
Isotype	IgG2a Kappa
Conjugate	FITC
Purity	Protein G purified
Buffer	PBS

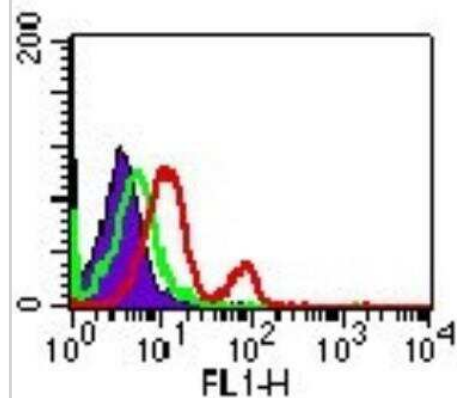
Product Description	
Host	Mouse
Gene ID	7100
Gene Symbol	TLR5
Species	Human, Mouse, Canine
Immunogen	This antibody was developed against KLH-conjugated synthetic peptide corresponding to a portion of human TLR5 between amino acids 700-800. The antibody also reacts with mouse TLR5.
Notes	This conjugate is made on demand. Actual recovery may vary from the stated volume of this product. The volume will be greater than or equal to the unit size stated on the datasheet.

Product Application Details	
Applications	Western Blot, Dot Blot, Flow Cytometry, Flow (Cell Surface), Flow (Intracellular), Immunocytochemistry/ Immunofluorescence, Immunohistochemistry, Immunohistochemistry-Frozen, Immunohistochemistry-Paraffin, Immunoprecipitation
Recommended Dilutions	Western Blot, Flow Cytometry, Immunohistochemistry, Immunocytochemistry/ Immunofluorescence, Immunoprecipitation, Immunohistochemistry-Paraffin, Immunohistochemistry-Frozen, Dot Blot, Flow (Cell Surface), Flow (Intracellular)
Application Notes	Optimal dilution of this antibody should be experimentally determined.



Images

Flow Cytometry: TLR5 Antibody (19D759.2) [FITC] [NBP2-24787F] - Analysis using the FITC conjugate of NBP2-24787. Staining of TLR5 in PBMCs using 0.5 ug/10⁶ cells of this antibody. Shaded histogram represents cells without antibody; green represents isotype control; red represents anti-TLR5 antibody.





Novus Biologicals USA

10730 E. Briarwood Avenue
Centennial, CO 80112
USA
Phone: 303.730.1950
Toll Free: 1.888.506.6887
Fax: 303.730.1966
nb-customerservice@bio-techne.com

Bio-Techne Canada

21 Canmotor Ave
Toronto, ON M8Z 4E6
Canada
Phone: 905.827.6400
Toll Free: 855.668.8722
Fax: 905.827.6402
canada.inquires@bio-techne.com

Bio-Techne Ltd

19 Barton Lane
Abingdon Science Park
Abingdon, OX14 3NB, United Kingdom
Phone: (44) (0) 1235 529449
Free Phone: 0800 37 34 15
Fax: (44) (0) 1235 533420
info.EMEA@bio-techne.com

General Contact Information

www.novusbio.com
Technical Support: nb-technical@bio-techne.com
Orders: nb-customerservice@bio-techne.com
General: novus@novusbio.com

Products Related to NBP2-24787F

NBP1-96981F	Mouse IgG2a Kappa Isotype Control (M2AK) [FITC]
NBP2-24827PEP	TLR5 Antibody Blocking Peptide
210-TA-005	TNF-alpha [Unconjugated]
7915-TR-025	TLR5 [Unconjugated]

Limitations

This product is for research use only and is not approved for use in humans or in clinical diagnosis. Primary Antibodies are guaranteed for 1 year from date of receipt.

For more information on our 100% guarantee, please visit www.novusbio.com/guarantee

Earn gift cards/discounts by submitting a review: www.novusbio.com/reviews/submit/NBP2-24787F

Earn gift cards/discounts by submitting a publication using this product:
www.novusbio.com/publications

