

Product Datasheet

TLR5 Antibody (19D759.2) [PE] NBP2-24783

Unit Size: 0.1 ml

Store at 4C in the dark.

www.novusbio.com



technical@novusbio.com

Publications: 12

Protocols, Publications, Related Products, Reviews, Research Tools and Images at:
www.novusbio.com/NBP2-24783

Updated 10/23/2024 v.20.1

Earn rewards for product
reviews and publications.

Submit a publication at www.novusbio.com/publications

Submit a review at www.novusbio.com/reviews/destination/NBP2-24783



NBP2-24783

TLR5 Antibody (19D759.2) [PE]

| Product Information | |
|----------------------------|---|
| Unit Size | 0.1 ml |
| Concentration | Please see the vial label for concentration. If unlisted please contact technical services. |
| Storage | Store at 4C in the dark. |
| Clonality | Monoclonal |
| Clone | 19D759.2 |
| Preservative | 0.05% Sodium Azide |
| Isotype | IgG2a Kappa |
| Conjugate | PE |
| Purity | Protein G purified |
| Buffer | PBS |

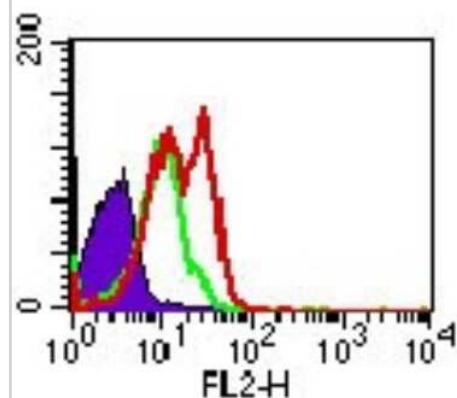
| Product Description | |
|----------------------------|--|
| Host | Mouse |
| Gene ID | 7100 |
| Gene Symbol | TLR5 |
| Species | Human, Mouse, Canine |
| Immunogen | This antibody was developed against KLH-conjugated synthetic peptide corresponding to a portion of human TLR5 between amino acids 700-800. The antibody also reacts with mouse TLR5. |

| Product Application Details | |
|------------------------------------|---|
| Applications | Western Blot, Flow Cytometry, Immunohistochemistry, Immunohistochemistry-Paraffin |
| Recommended Dilutions | Western Blot, Flow Cytometry 1ul/1 million cells, Immunohistochemistry, Immunohistochemistry-Paraffin |
| Application Notes | Optimal dilution of this antibody should be experimentally determined. |

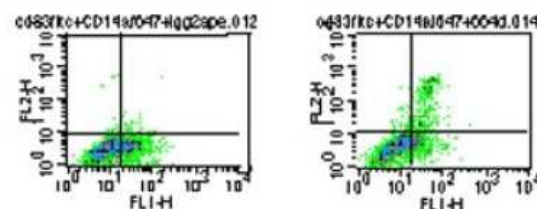


Images

Flow Cytometry: TLR5 Antibody (19D759.2) [PE] [NBP2-24783] - Intracellular flow analysis of TLR5 in human PBMCs using 1 ug/10⁶ cells of this antibody. Shaded histogram represents cells without antibody; green represents isotype control; red represents anti-TLR5 antibody.



Flow Cytometry: TLR5 Antibody (19D759.2) [PE] [NBP2-24783] - Analysis of CD14-/CD83+/TLR5+ differentiated myeloid dendritic cells (mDCs). PBMCs were stimulated 5 days with GM-CSF+IL4 prior to the staining. The cells were stained for surface markers CD14 and CD83 FITC, and TLR5 PE. CD14- cells were gated and stained with PE-conjugated isotype control (mouse IgG2a), and FITC-conjugated CD83 (left). CD14- cells were gated and stained with 1 ug PE-conjugated TLR5, and FITC-conjugated CD83 (right).



Publications

Deng J, Ma-Krupa W, Gewirtz AT et al. Toll-like receptors 4 and 5 induce distinct types of vasculitis. *Circ Res.* 2009-02-27 [PMID: 19150884] (IHC-P, Human)

Details:

IMG-664A: IHC (paraffin), human temporal arteries, Fig. 1E,G.

Wu J, Meng Z, Jiang M et al. Toll-like receptor-induced innate immune responses in non-parenchymal liver cells are cell type-specific. *Immunology.* [PMID: 19922426]

Details:

Citation using the PE/Cy5 form of this antibody.

Kaupilla JH, Mattila AE, Karttunen TJ, Salo T. Toll-like receptor 5 (TLR5) expression is a novel predictive marker for recurrence and survival in squamous cell carcinoma of the tongue. *Br J Cancer.* 2013-02-19 [PMID: 23287987] (IF/IHC)

Details:

TLR5 (IMG-664A, Clone 19D759.2) IHC in normal epithelium and squamous cell carcinoma of the tongue, Figs 1, 3.

Fukata M, Breglio K, Chen A et al. The myeloid differentiation factor 88 (MyD88) is required for CD4+ T cell effector function in a murine model of inflammatory bowel disease. *J Immunol.* 2008-02-01 [PMID: 18209086]

Details:

Flow (Cell Surface) + Flow (Intracellular) [mouse splenic CD4+CD45Rbhigh T cells, RAW 264.7 cells], Fig. 1.

Antibodies specific for human or murine Toll-like receptors detect canine leukocytes by flow cytometry. Burgener IA and TW Jungi. *Veterinary Immunology*

Miller LS, SOrensen OE, Liu PT et al. TGF-alpha regulates TLR expression and function on epidermal keratinocytes. *J Immunol.* 2005-05-15 [PMID: 15879109]

Ha H, Lee JH, Kim HN et al. Stimulation by TLR5 modulates osteoclast differentiation through STAT1/IFN-beta. *J Immunol.* 2008-02-01 [PMID: 18209032] (WB, Mouse)

Details:

WB (mouse osteoclasts and bone marrow cells), Fig. 1A.

Wong CK, Cheung PF, Ip WK et al. Intracellular signaling mechanisms regulating toll-like receptor-mediated activation of eosinophils. *Am J Respir Cell Mol Biol.* 2007-07-01 [PMID: 17332440]

Details:

Human blood eosinophils and neutrophils from buffy coat: For WB, Fig. 1A: TLR1 (IMG-5012), TLR5 (IMG-664), TLR6 (IMG-304A), TLR7 (IMG-540), TLR8 (IMG-321A), TLR9 (IMG-305A). For Flow (Intracellular) and Flow (Surface), Fig. 1B: TLR1 (IMG-5021), TLR2 (IMG-416C), TLR3 (IMG-315C), TLR4 (IMG-417C), TLR5 (IMG-663C), TLR6 (IMG-304C), TLR7 (IMG-665A), TLR8 (IMG-321C), TLR9 (IMG-305C).

Francois S et al. Inhibition of neutrophil apoptosis by TLR agonists in whole blood: involvement of the phosphoinositide 3-kinase/Akt and NF-kappaB signaling pathways, leading to increased levels of Mcl-1, A1, and phosphorylated Bad *J Immunol* [PMID: 15749901] (WB)

Details:

Used the FITC form of this antibody.

Harman AN, Bye CR, Nasr N et al. Identification of lineage relationships and novel markers of blood and skin human dendritic cells. *J Immunol.* 2013-01-01 [PMID: 23183897]

Details:

Antibodies cited in Fig 4B for flow cytometric analysis of TLR expression in human monocyte-derived dendritic cells (MDDC), CD14+ monocytes, myeloid DC, and plasmacytoid DC:1. TLR2-FITC, clone T2.1 (IMG-416C): Flow (cell surface)2. TLR4-PE, clone HTA124 (

Crellin NK Garcia RV Hadisfar O et al. Human CD4+ T cells express TLR5 and its ligand flagellin enhances the suppressive capacity and expression of FOXP3 in CD4+CD25+ T regulatory cells. *J Immunol.* [PMID: 16339542]

Details:

Citation using the Azide and Endotoxin Free form of this antibody.

Faham A, Altin JG. Antigen-containing liposomes engrafted with flagellin-related peptides are effective vaccines that can induce potent antitumor immunity and immunotherapeutic effect. *J Immunol.* 2010-08-01 [PMID: 20610649]

Details:

Product cited: TLR5 Alexa Fluor (IMG-664AF488): Flow (cell surface): HEK-293, HepG2, CHO, and BMDCs (bone marrow derived dendritic cells) cell lines, Fig 3. Note: Cell surface expression of TLR5 was found to be relatively strong in HEK-293 and moderate i

Burgener IA, Jungi TW. Antibodies specific for human or murine Toll-like receptors detect canine leukocytes by flow cytometry. *Vet Immunol Immunopathol.* 2008-07-15 [PMID: 18439687]

Details:

Canine (dog) PBMC subpopulations: 1. 10083K [IC-Flow (Intracellular Staining Flow Assay) Kit.



Novus Biologicals USA

10730 E. Briarwood Avenue
Centennial, CO 80112
USA
Phone: 303.730.1950
Toll Free: 1.888.506.6887
Fax: 303.730.1966
nb-customerservice@bio-techne.com

Bio-Techne Canada

21 Canmotor Ave
Toronto, ON M8Z 4E6
Canada
Phone: 905.827.6400
Toll Free: 855.668.8722
Fax: 905.827.6402
canada.inquires@bio-techne.com

Bio-Techne Ltd

19 Barton Lane
Abingdon Science Park
Abingdon, OX14 3NB, United Kingdom
Phone: (44) (0) 1235 529449
Free Phone: 0800 37 34 15
Fax: (44) (0) 1235 533420
info.EMEA@bio-techne.com

General Contact Information

www.novusbio.com
Technical Support: nb-technical@bio-techne.com
Orders: nb-customerservice@bio-techne.com
General: novus@novusbio.com

Products Related to NBP2-24783

| | |
|---------------|---|
| NBP1-96981PE | Mouse IgG2a Kappa Isotype Control (M2AK) [PE] |
| NBP2-24787APC | TLR5 Antibody (19D759.2) [Allophycocyanin] |
| NBP2-24827PEP | TLR5 Antibody Blocking Peptide |
| 210-TA-005 | TNF-alpha [Unconjugated] |

Limitations

This product is for research use only and is not approved for use in humans or in clinical diagnosis. Primary Antibodies are guaranteed for 1 year from date of receipt.

For more information on our 100% guarantee, please visit www.novusbio.com/guarantee

Earn gift cards/discounts by submitting a review: www.novusbio.com/reviews/submit/NBP2-24783

Earn gift cards/discounts by submitting a publication using this product:
www.novusbio.com/publications

